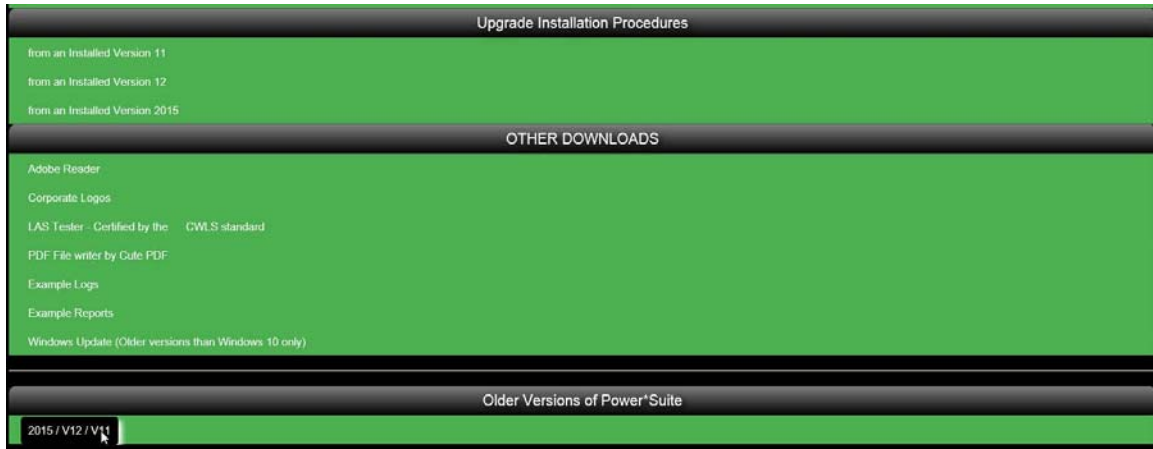


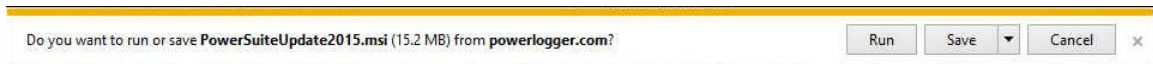
Version 2015 Patch Download and Installation Procedures



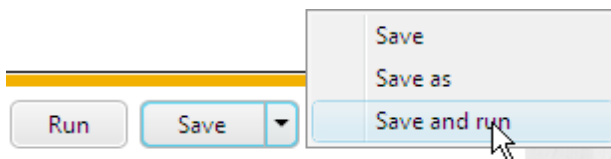
- 1.) Go to our downloads page www.powerlogger.com/downloads.asp. and scroll down to the bottom. In the Older Version of Power*Suite Section **Click** on the **2015/ V12 / V11**.This will jump you to our Older Versions download Page.



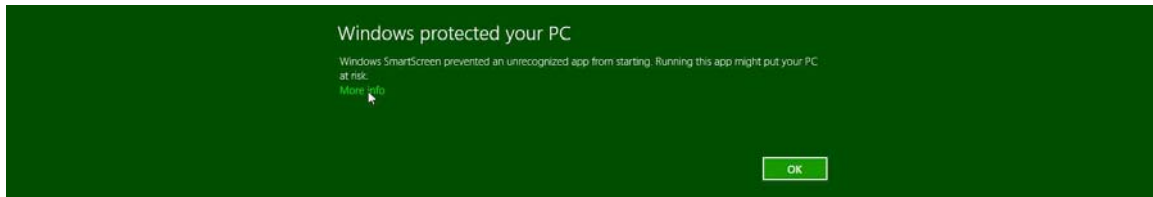
- 2.) **Click** on the Current Update Patch **2015** selection. This will activate the download file **PowerSuiteUpdate2015.msi**.



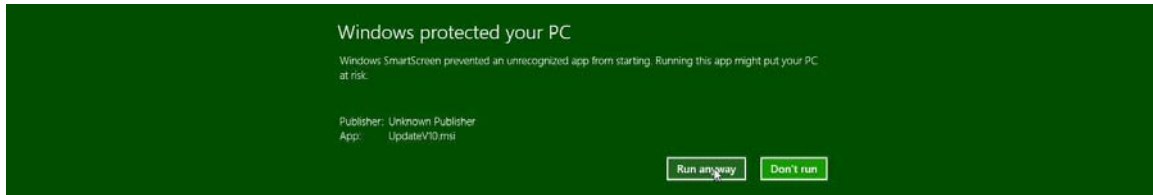
- 3.) **Click** on the **Down Arrow** beside the **Save** button and click on Save and run and this will more than likely save the file to your downloads folder.



- 4.) Once the file has been downloaded you may get a message indicating that this file may be harmful and you will see a more info selection. **Click** on the **More Info Selection**



- 5.) **Click** on **Run Anyway**.

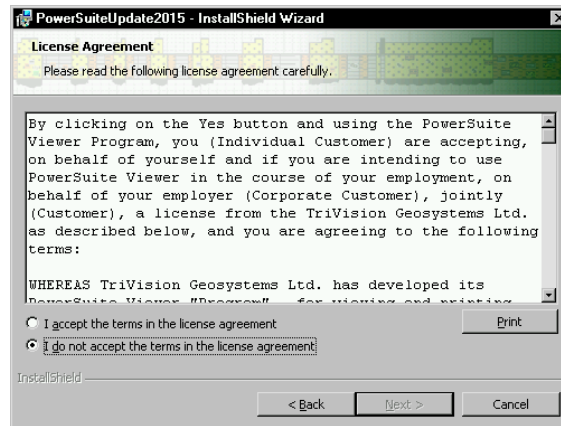


Power*Suite Patch Installation Procedure

- 1.) This will activate the **Power*Suite Update Welcome Message Window**. **Click** on the **Next >** button.

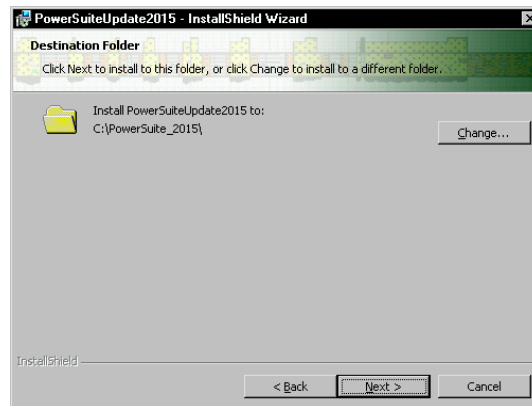


- 2.) This will activate the **License Agreement** window. Click on the radio button beside **I accept the license agreement**. Click on the **Next >** button.

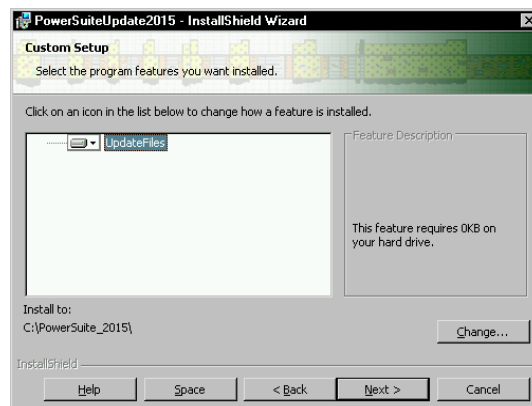


- 3.) This will activate the **Destination Folder** window with **C:\PowerSuite_2015** as the default location. Click on the **Next >** button.

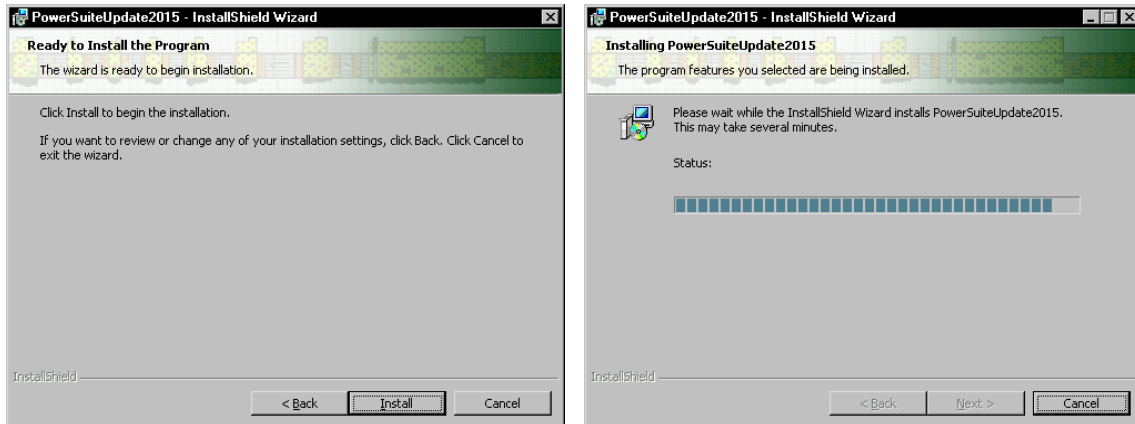
The User has the ability to change the destination folder if required by clicking on the **Change...** button. This all depends on where the original Power*Suite was installed.



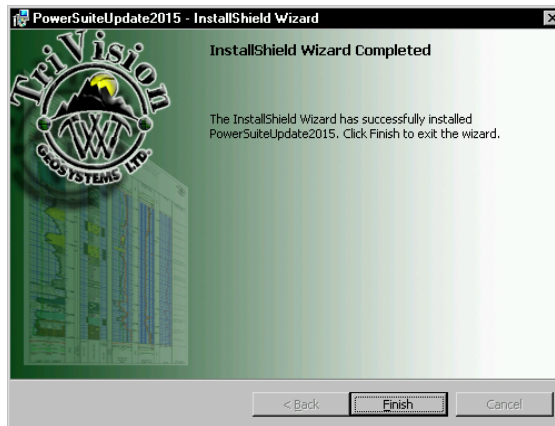
- 4.) If you have **previously installed the floating license** you will want to **Click on the down arrow** beside the **Floating Update** and **select "This feature will be installed on the local hard drive"** as shown below. Click on the **Next >** button



- 5.) This will activate the **Ready to Install the Program** window. Click on the **Install** button. The user will see the **Installing Power*Suite Update** window copying files, removing backup files etc. An example of this window can be seen below



- 6.) Once the Update Installation is complete the **Install Wizard Completed** window shown below will be activated. Click on the **Finish** button for the Update installation.



You will now have successfully installed the Power*Suite Update.