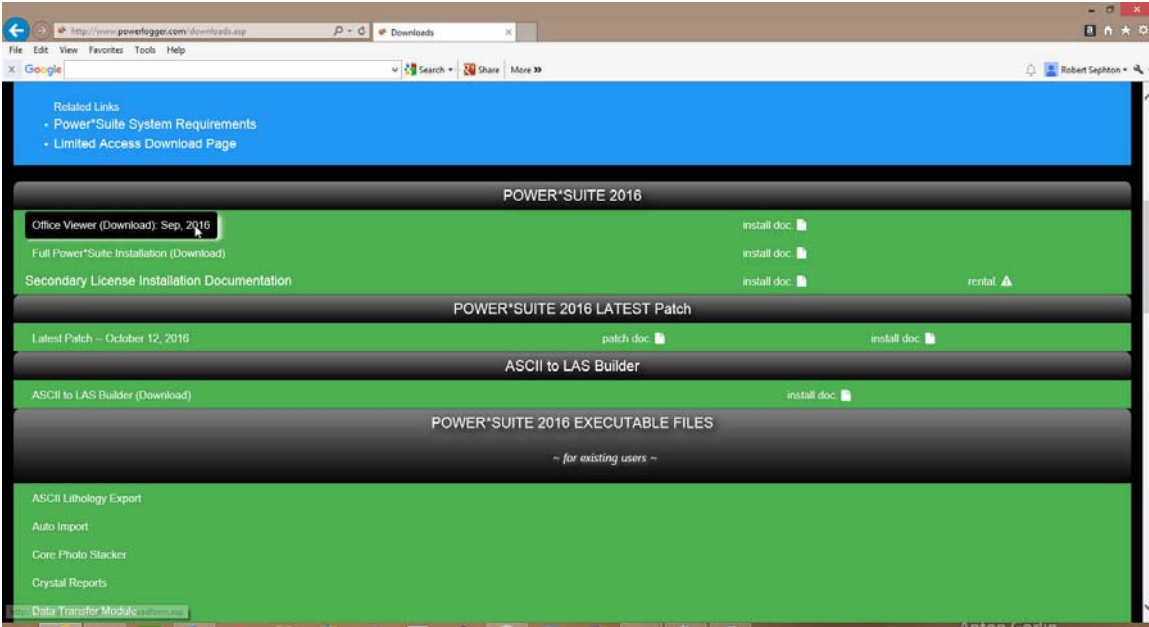


Power*Suite Viewer Installation Procedure



1.) **Click on the Office Viewer (Download)** from our downloads page www.powerlogger.com/downloads.asp. This will activate a Submit Personnel Information Page.

Full Power*Suite
 Power*Suite Office Viewer
 ASCII to LAS Builder

First Name*
 Robert

Last Name*
 Sephton

Title
 President

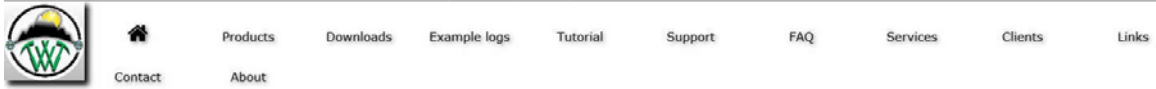
Organization
 TriVision Geosystems Ltd.

Phone Number
 403-777-9454

Email*
 bob.sephton@powerlogger.com

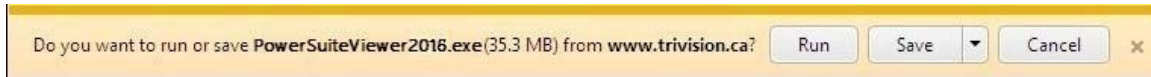
Windows Version
 Windows 8

2.) Filled in the mandatory fields and **click on the button**. This will direct you to the download page.



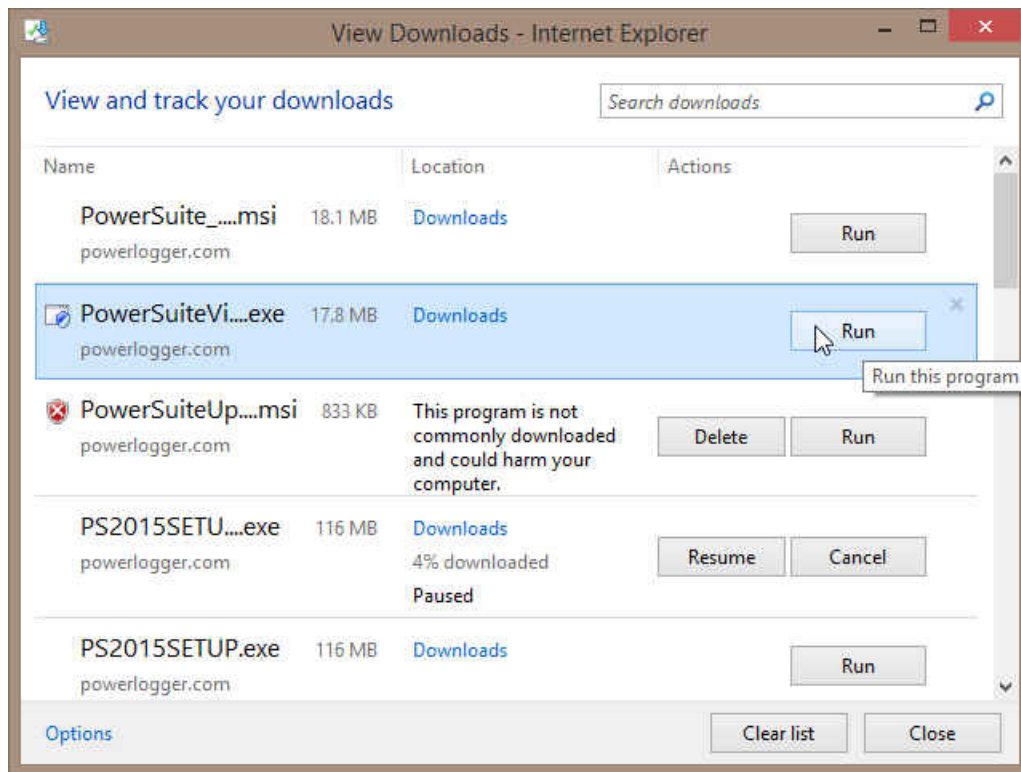
Download: "Power*Suite Office Viewer"

- 3.) Click on the **Download: "Power*Suite Office Viewer"** verbiage. This will activate the download file **PowerSuiteViewer2016.exe**.



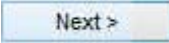
- 4.) Click on the **Save** button and the file will be downloaded to your Downloads folder.

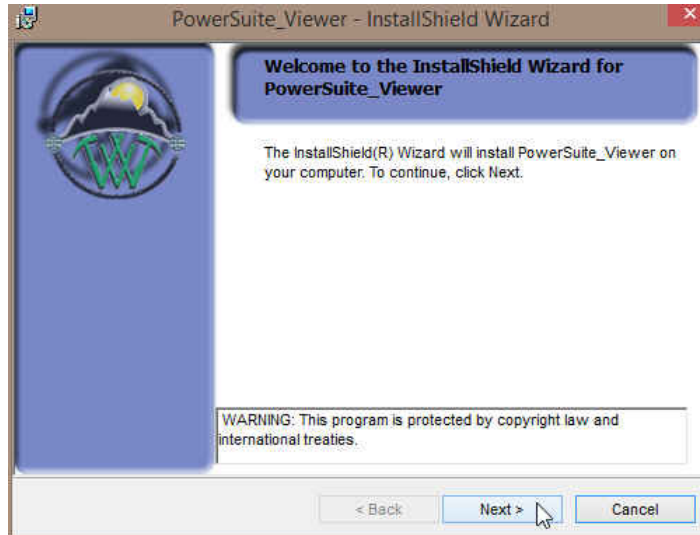
- 5.) Click on the **View downloads** button. This will activate the View Downloads Window.


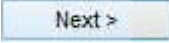


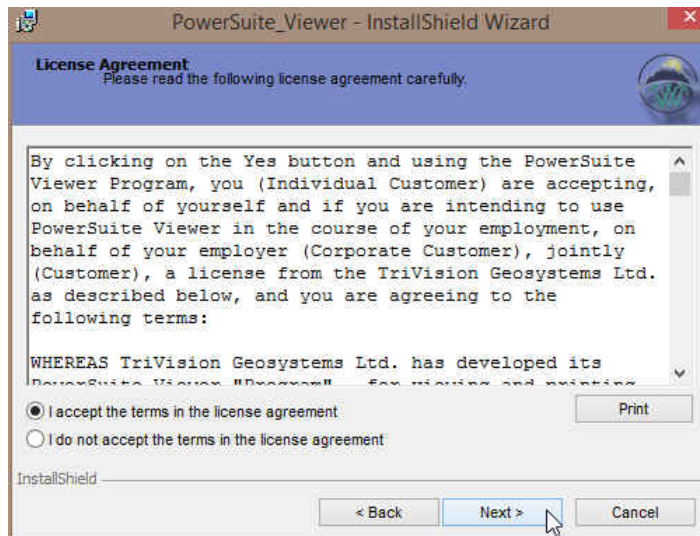
- 6.) Highlight the **PowerSuiteViewer2016.exe** file and Click on the **Run** button. This will start up the Install Wizard.

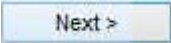
Power*Suite Viewer Installation Procedure

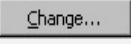
- 1.) This will activate the Install Shield setup followed by the Windows Install window and the Power*Suite Welcome Message Window. Click on the  button.

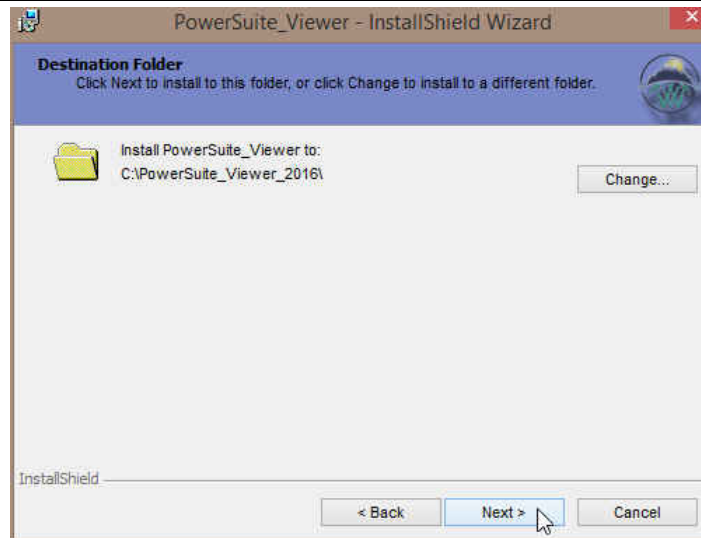


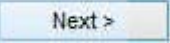
- 2.) This will activate the License Agreement window. Click on the  beside I accept the terms in the license agreement. Then click on the  button.




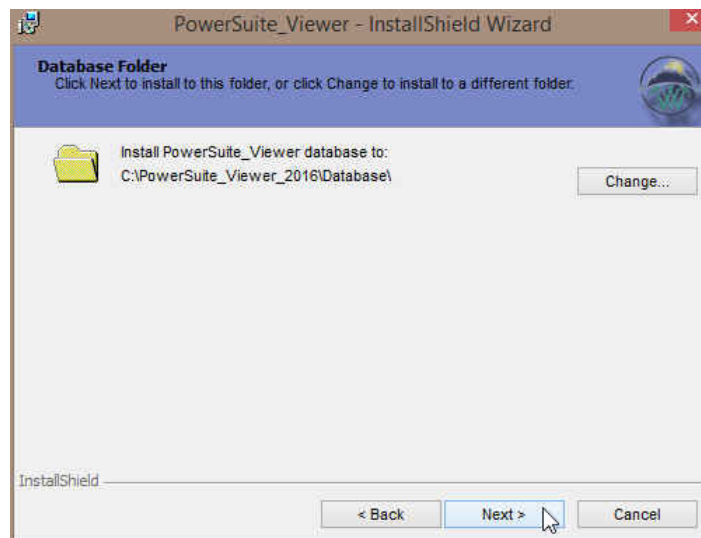
- 3.) This will activate the **Destination Folder** window with **C:\PowerSuite_Viewer_2016** as the default location. **Click** on the  **button**.

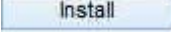
The User has the ability to change the destination folder if required by clicking on the  button. This is not recommended.

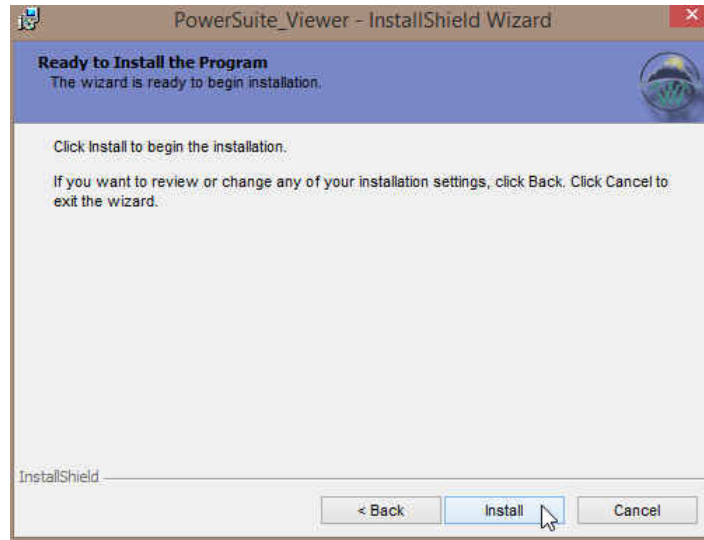


- 4.) This will activate the **Database Folder Location** window with **C:\PowerSuite_Viewer_2016\Database** as the default location. **Click** on the  **button**.

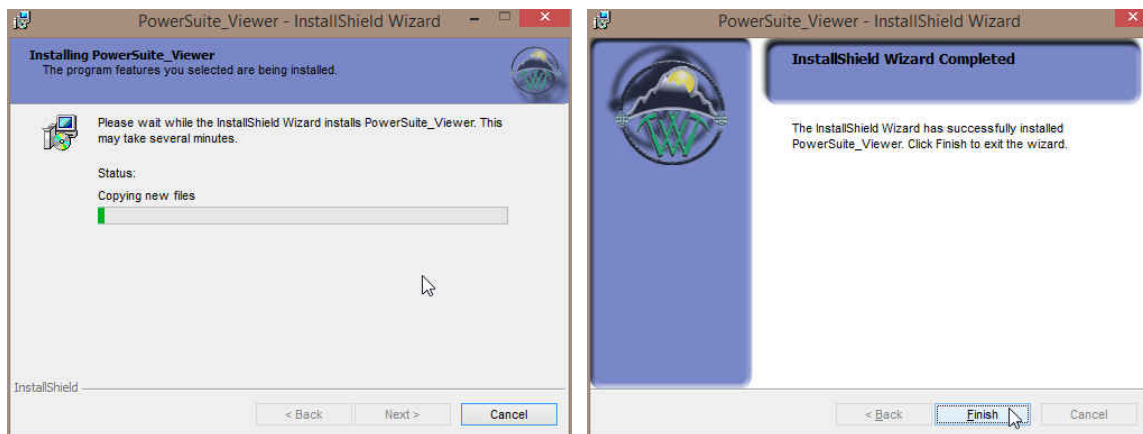
The user has the ability to change the database destination folder by clicking on the  button. This is recommended if you are working with a LAN system where the Network directory is being backed up on a regular basis. If not the default destination folder is recommended.



5.) This will activate the Ready to Install window. **Click** on the  **button**.



6.) After the Installation is finished the **Install Wizard Completed** window shown below will be activated. **Click** on the  **button** for the install.



You will now have successfully installed the Power*Suite 2016 Office Viewer.