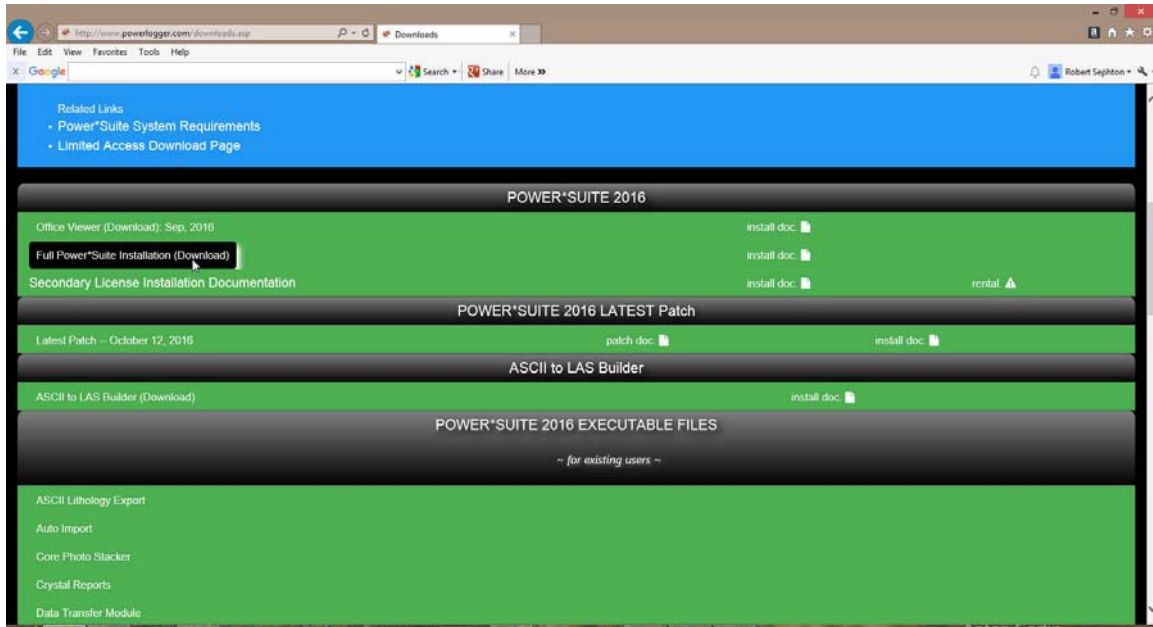


2016 Download and Installation Procedures



1.) Click on the **Full Power*Suite Installation** selection from our downloads page www.powerlogger.com/downloads.asp. This will activate a Submit Customer Information Page.

Full Power*Suite
 Power*Suite Office Viewer
 ASCII to LAS Builder

First Name*
 Robert

Last Name*
 Sephton


Title
 President

Organization
 TriVision Geosystems Ltd.

Phone Number
 403-777-9454

Email*
 bob.sephton@powerlogger.com

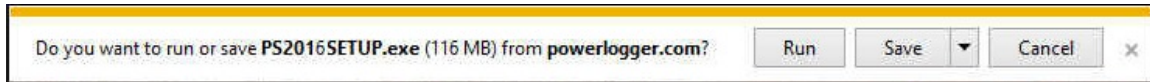
Windows Version
 Windows 8

2.) Filled in the mandatory fields and **click** on the  **button**. This will direct you to the download page.

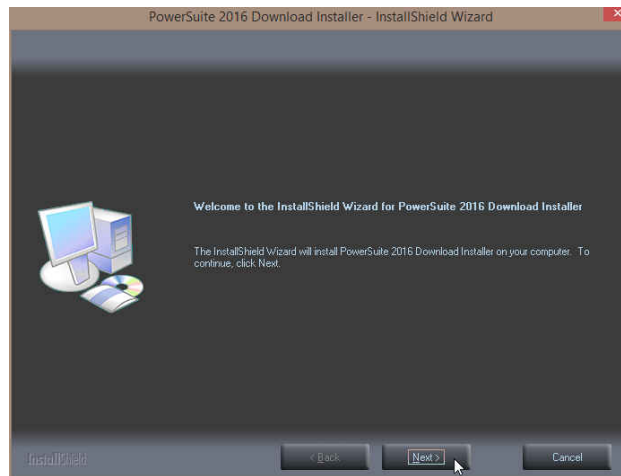


Download: "Full Power*Suite"

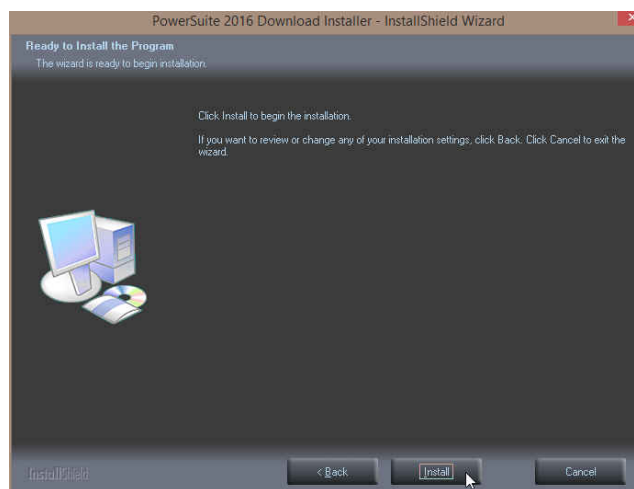
- 3.) Click on the **Download: "Full Power*Suite"** verbiage. This will activate the download file **PS2016Setup.exe**.



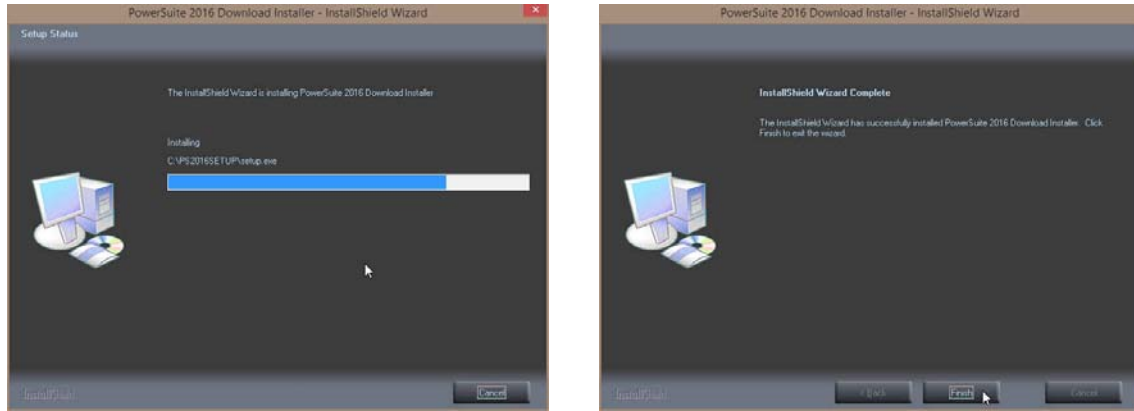
- 4.) Click on the **Save** button and the file will be saved to your downloads folder.
- 5.) Depending on your computer settings you may be asked to allow the application to Run. If you allow this down load to run this will activate the Power*Suite 2016 Download Installer shown below.

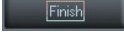


- 6.) Click on the **Next >** button to continue. This will activate the Ready to Install Window shown below.

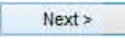


- 7.) Click on the **Install** button to begin the process of extracting the files. When they have been extracted you will be prompted with the Finished Window.

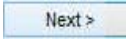


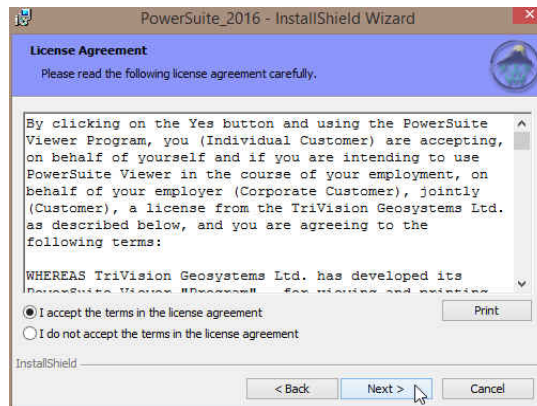
- 8.) When the files are finished extracting you will see the **Click  button**. This will begin the installation of Power*Suite 2016. If the installation does not proceed you will want to locate and run a file called **setup.exe** in the C:\PS2016SETUP\ folder.


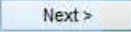
Power*Suite Installation Procedure

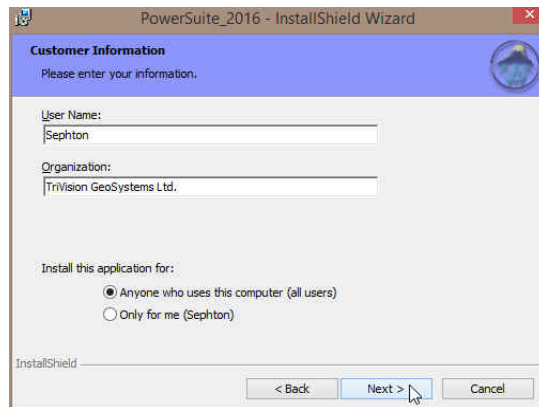
- 1.) This will activate the Install Shield setup followed by the Windows Install window and the **Power*Suite Welcome Message Window**. **Click on the  button**.

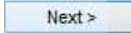


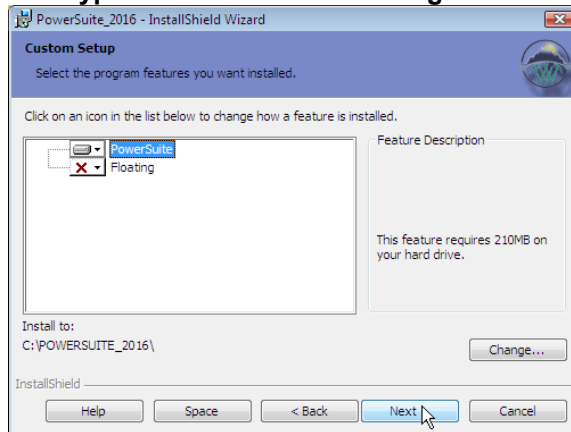
- 2.) This will activate the License Agreement window. **Click on the beside I accept the terms in the license agreement**. Then **click on the  button**.

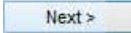


- 3.) This will activate the Customer Information window with User Name and Organization fields. In the Install this application for portion of the window **Click** on the  beside **Anyone who uses this computer**. Then **click** on the  button.

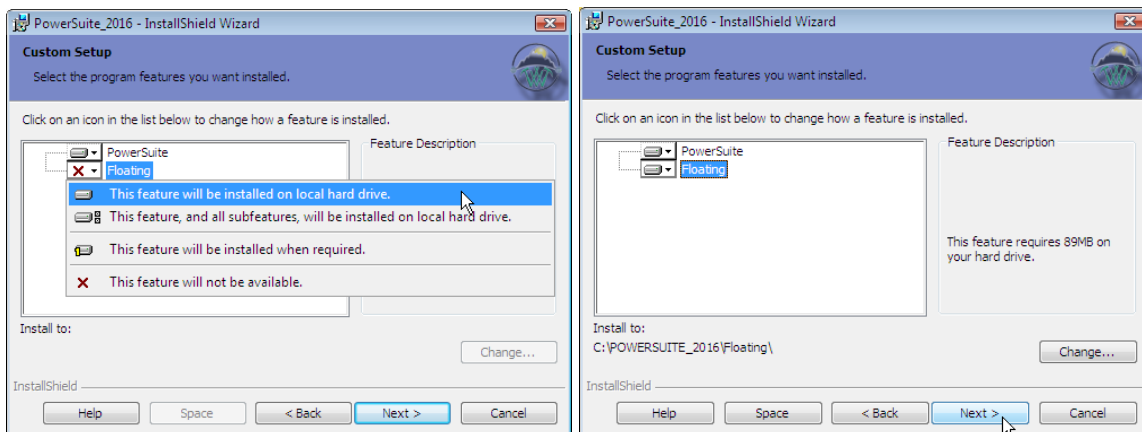


- 4.) a.) This will activate the **Custom Setup** window with the Floating not activated. If you do not need to **utilize a second type of Power*Suite licensing**. **Click** on the  button.



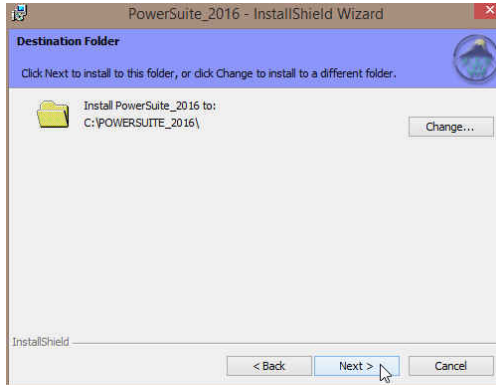
- 4) b.) If you do need to **utilize a second type of Power*Suite licensing** then you will want to **click** on the **Floating Option** and select the Floating Option. **Click** on the  button.

The floating folder allows the user to have two licensing types available. This could be a HASP key activation for Power*Log and a Crypkey or another HASP key activation for Power*Curve.



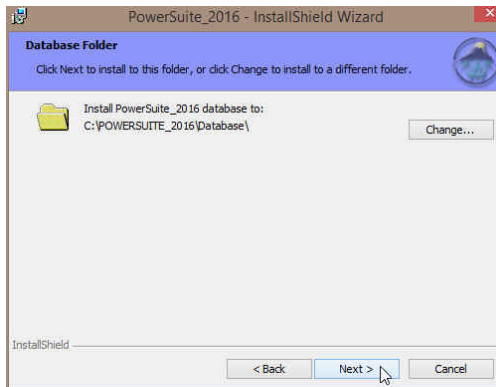
- 5) This will activate the **Destination Folder** window with **C:\PowerSuite_2016** as the default location. **Click** on the **Next >** button.

The User has the ability to change the destination folder if required by clicking on the **Change...** button. This is not recommended.

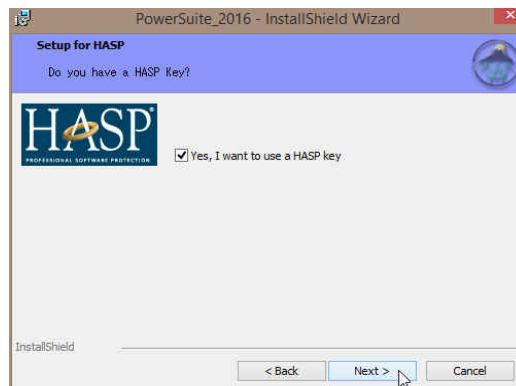


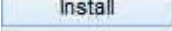
- 6) This will activate the **Database Folder Location** window with **C:\PowerSuite_2016\Database** as the default location. **Click** on the **Next >** button.

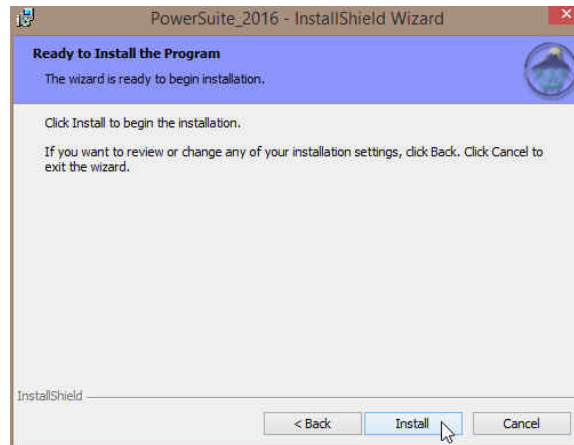
The user has the ability to change the database destination folder by clicking on the **Change...** button. This is recommended if you are working with a LAN system where the Network directory is being backed up on a regular basis. If not the default destination folder is recommended.



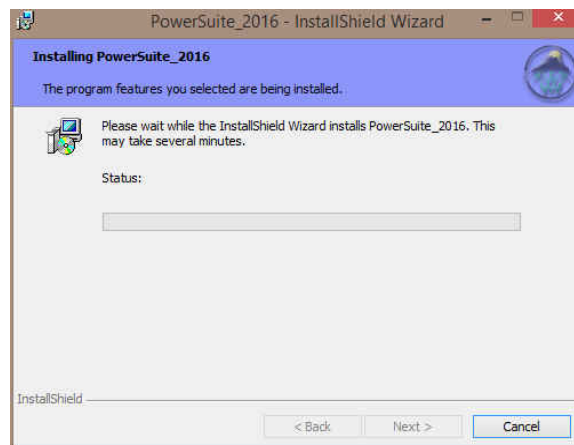
- 7) This will activate the Setup for Hasp Window. If you have a Hasp USB key and it has been activated for Power*Suite 2016 **Click** on the **Next >** button. If you do not have a hasp key and you are evaluating then **Uncheck** the Yes, I want to use a HASP key and then **Click** on the **Next >** button



8) This will activate the Ready to Install window. **Click on the  button.**


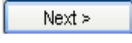


9) Next the user will see the Installing **Power*Suite window** copying files, writing to the registry, creating desktop icons, creating start menu folder, ODBC components etc. An example of this window can be seen below.

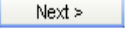


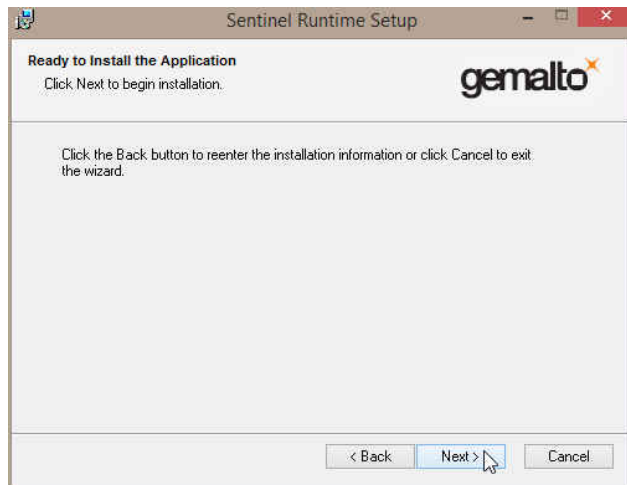
9.) Once the installation has been completed the Hasp Device Driver Installation Welcome window will be activated. **Click on the  button.**



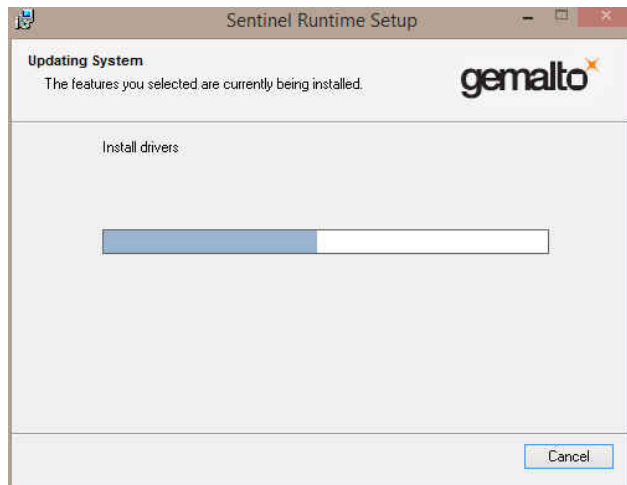
10.) This will activate the End User License Agreement for the Hasp Driver. **Click** on the radio button  beside **I accept the license agreement**. Then **click** on the  button.



11.) This will initiate the Ready to install window. **Click** on the  button.

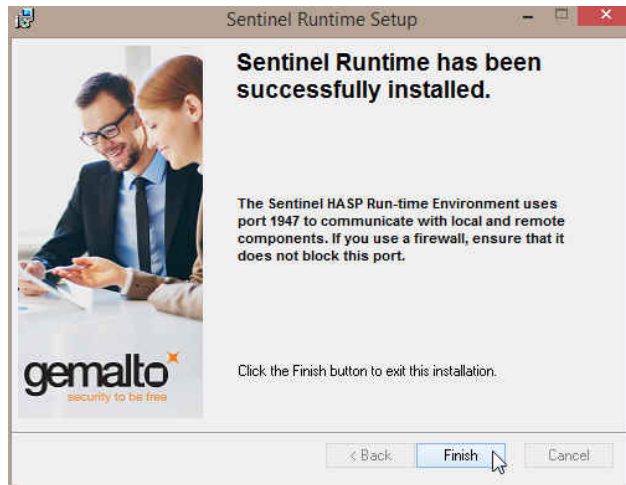



12.) This will initiate the install windows for the HASP device drivers.



13.)When the installation is complete the program will activate the Successfully Installed window.

Click on the  button



14.)Once the Update Installation is complete the **Install Wizard Completed** window shown below will be activated. Click on the  button for the Main install.



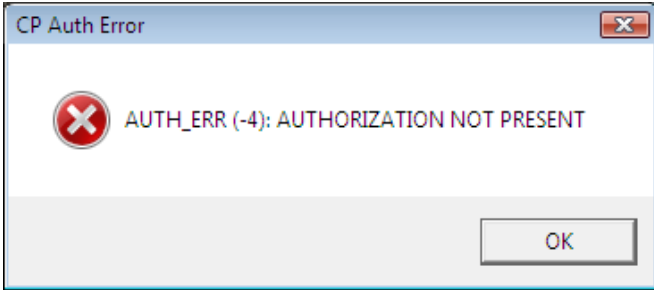
You have now successfully installed Power*Suite Version 2016 and the Hasp driver.

Trial License Activation

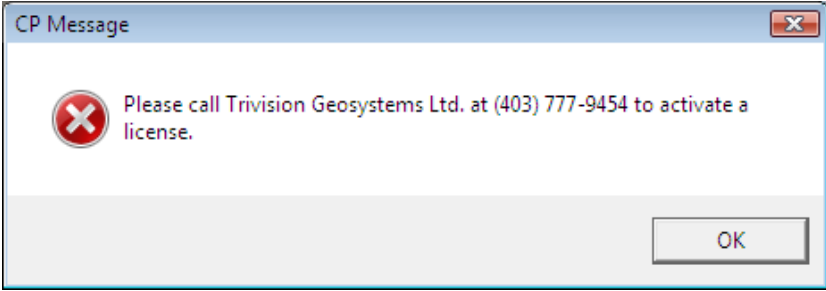


- 1.) **Double click** on the **Power*Log / Curve or Core Desktop Icons**
- 2.) **Or** In **Windows 7** or less **click** on the **start** button on the taskbar and **Click** on **All Programs** and **Click** on **PowerSuite_2016** and then select the **Power*Log / Curve or Core** Selections. In **Windows 8** you can **press** the **Windows key** on the keypad and **type PowerLog** into the search bar and then **select** the **Power Log** to activate the application.

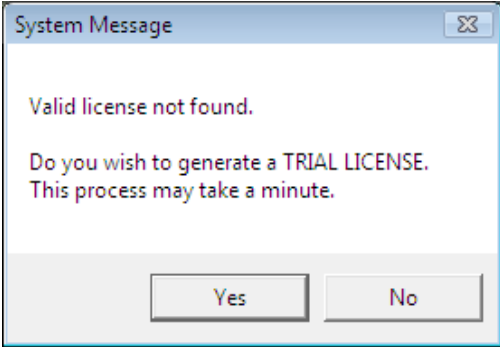
- 3.) This will activate a CP Auth Error message. **Click** on the **OK** button.




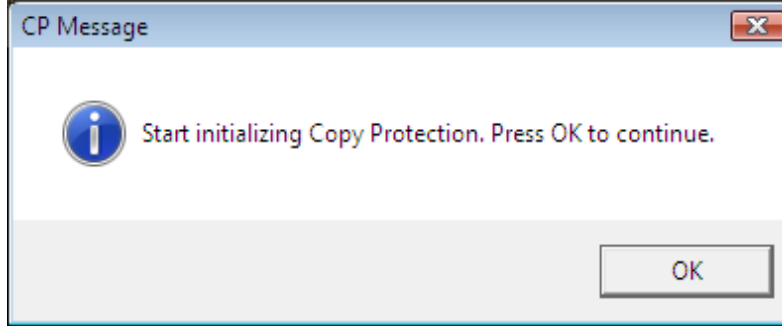
- 4.) This will activate a CP Message shown below. Note the phone number for later use. The trial license activated will be for 7 days. If you need further time to evaluate, you will have to call the phone number for more time. **Click** on the **OK** button.




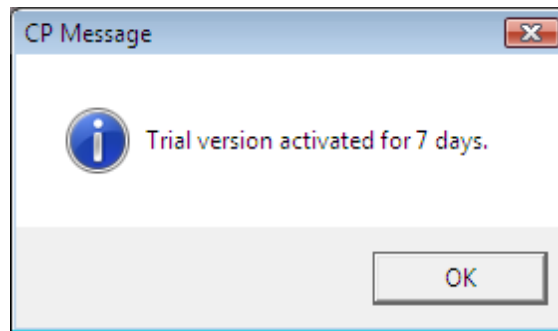
- 5.) This will activate a System Message indicating there was no valid license and do you want to generate a trial license. **Click** on the **Yes** button.



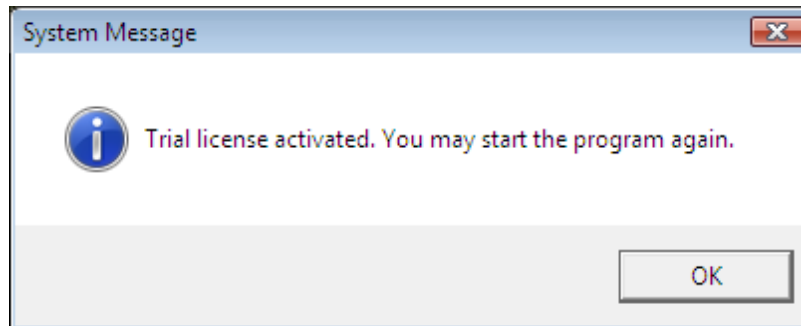
6.) This will activate a CP Message shown below. **Click** on the  **button**.



7.) This will activate another CP Message shown below. **Click** on the  **button**





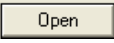
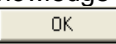
8.) This will activate a final System Message. **Click** on the  **button**. Repeat Step 1 to activate the program.

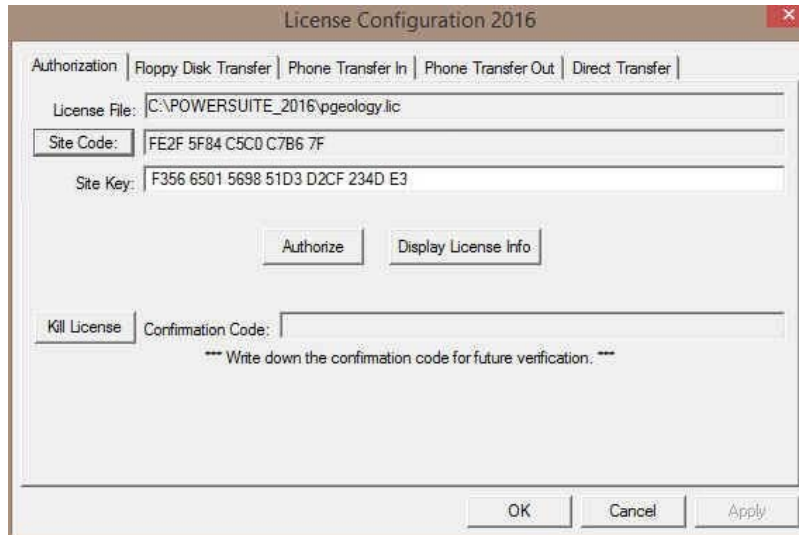



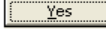

Crypkey Power*Suite License Authorization

You may want to further evaluate the Applications so you may wish to extend the license. Follow these instructions to generate a site code which will allow you to get an extension. Once you have activated the **License Configuration Window** it is imperative that it **remains open** as sometimes the Site Code changes and the site key we generate will no longer be valid.

Click on the  **start** button on the toolbar and click on **All Programs** and select **POWER*SUITE_2016**. Then, select **Utilities** and click on the  selection. In **Windows 8** you can press the **Windows key** on the keypad and type **License Configuration** into the search bar and then select the **License Configuration** to activate the application. This will activate the Select License file window.

1. Click on the **pgeology.lic** file name in the **PowerSuite_2016** folder and then click on the  button in the **Select License File** window to proceed.
2. Acknowledge both the subsequent error message and the contact message by clicking on the  buttons. This will now activate the **License Configuration 2016** window which will default to the Authorization Tab.



3. Click on the  button within the window.
4. This will activate a System message stating "Site Code generation may take a few minutes. Do you wish to continue?" Click on the  button.
5. The *Site Code* will be generated and can then be displayed in the *Site Code* field. This number can be written down, copied and pasted and sent to Trivision Geosystems via phone at 1+ 403-777-9454, or email at info@powerlogger.com .
6. Trivision will generate a *Site Key*. This number will have coded within it the number of days the program will be activated for and which modules you wish to purchase or evaluate. Type or copy and paste from the email the site key number within the *Site Key* Field.
7. Click on the  button. If successful you will get a message indicating so.