


Database Management Tool

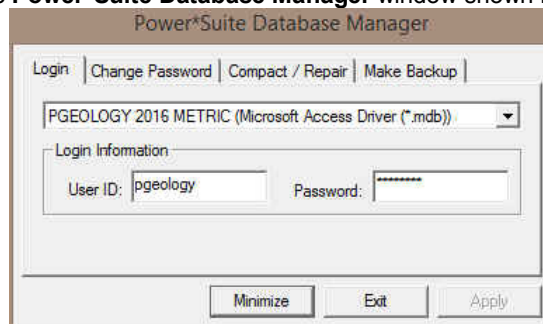
The Database Management tool allows the user to perform basic database functions on Power*Suite's access database. There are times where the performance of the database may become less responsive or slower to retrieve data. This would be case where the user would perform a compaction / repair on the database. The other utility provided would be changing passwords or a backup to the access database.


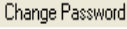
Database Management – How to Change your Password

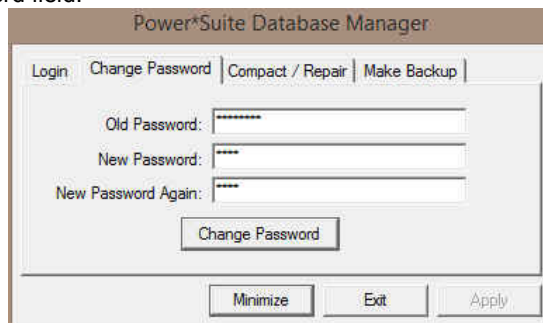
The user cannot be connected to the database (Power*Log, Power*Core, Power*Curve, LAS Export Modules open) when this procedure is performed. If they are open please disconnect by selecting disconnect from the file menu.


The login window information must be filled in correctly for the user to be able to utilize any of the functionalities of this utility.

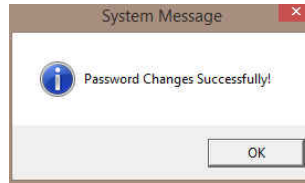
1. In **Windows 7** or less click on the  button, select **Programs**, select **Power*Suite_2016**, select **Utilities** and click on the **Database Management**. In **Windows 8** you can press the **Windows key** on the keypad and type **Database Manager** into the search bar and then select the **Database Manager** to activate the **Power*Suite Database Manager** window shown below.

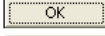
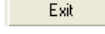


2. Click on the  down arrow beside the database selection field and select the database you wish to perform the management function.
3. Click in the **User ID** field to activate a flashing caret and type in your **User ID**. (Default is **pgeology**). Depress the Tab key to move the caret to the Password field.
4. Type in your **old password**. (Default is pgeology)
5. Click on the  **Change Password** tab. This will activate the **Password** window shown on the next page with a caret in the Old Password field.



6. Type in your **old password**. Depress the tab key to advance the caret to the New Password field.
7. Type in your **new password**. Depress the tab key to advance the caret to the New Password Again field.
8. Type in your **new password** again.
9. Click on the  **Change Password** button. If done correctly, a System message will appear stating Password changed successfully shown below.

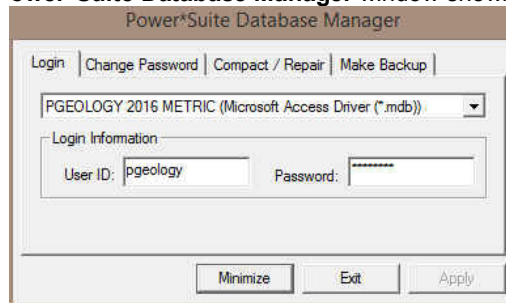



10. Click on the  button to acknowledge this window.
11. Click on the  button to escape the Power*Suite Database Manager.

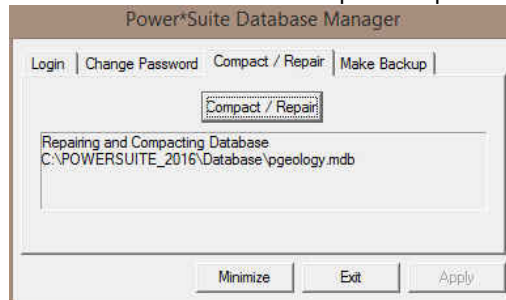
*DB – How to Compact / Repair your Power*Suite Database.*


The user cannot be connected to the database (Power*Log, Power*Core, Power*Curve, LAS Export Modules open) when this procedure is performed. If they are open please disconnect by selecting disconnect from the file menu.

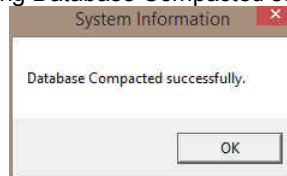
1. In **Windows 7** or less click on the  button, select **Programs**, select **Power*Suite_2016**, select **Utilities** and click on the **Database Management**. In **Windows 8** you can press the **Windows key** on the keypad and type **Database Manager** into the search bar and then select the **Database Manager** to activate the **Power*Suite Database Manager** window shown below.

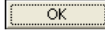
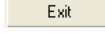


2. Click on the  down arrow beside the database selection field and select the database you wish to perform the management function.
3. Click in the **User ID** field to activate a flashing caret and type in your **User ID**. (Default is **pgeology**). Depress the Tab key to move the caret to the Password field.
4. Type in your **password**. (Default is **pgeology**)
5. Click on the **Compact / Repair** Tab. This will activate the Compact / Repair window.




6. Click on the  button. You will view the database file name and location in the window followed by a system message stating Database Compacted successfully shown below.

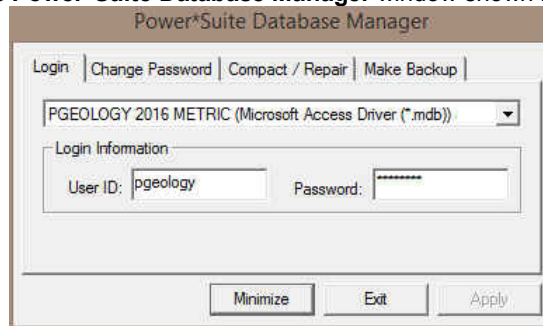




7. Click on the  button to acknowledge this window.
8. Click on the  button to escape the Power*Suite Database manager.

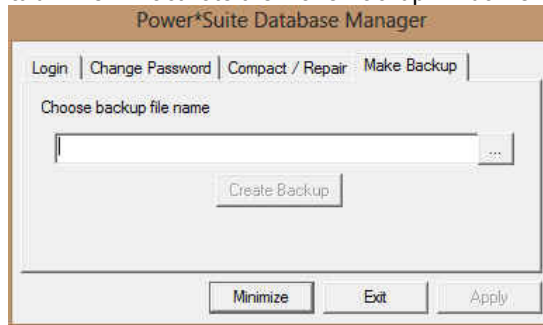
*DB Manager – How to Back up your Power*Suite Database.*


The user cannot be connected to the database (Power*Log, Power*Core, Power*Curve, LAS Export Modules open) when this procedure is performed. If they are open please disconnect by selecting disconnect from the file menu.

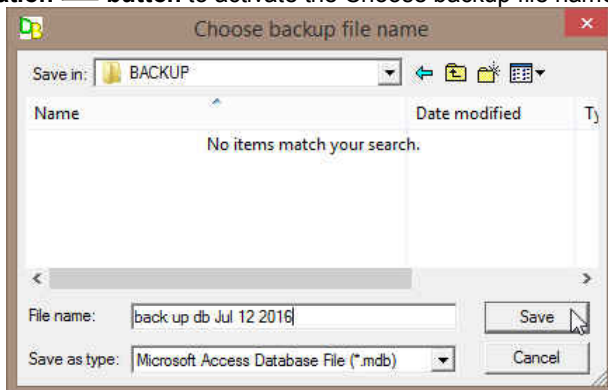
1. In **Windows 7** or less click on the  button, select **Programs**, select **Power*Suite_2016**, select **Utilities** and click on the **Database Management**. In **Windows 8** you can press the **Windows key** on the keypad and type **Database Manager** into the search bar and then select the **Database Manager** to activate the **Power*Suite Database Manager** window shown below.

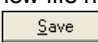


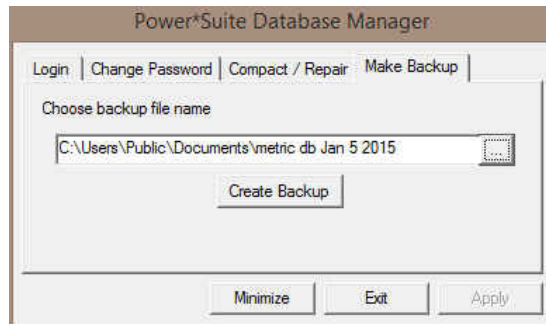
2. Click on the  down arrow beside the database selection field and select the database you wish to perform the management function. The default database is the **PGEOLOGY 2016 METRIC (Microsoft Access Driver [*mdb])** shown in the above window.
3. Click in the **User ID** field to activate a flashing caret and type in your **User ID**. (Default is **pgeology**). Depress the Tab key to move the caret to the Password field.
4. Type in your **password**. (Default is **pgeology**)
5. Click on the  **Make Backup** tab. This will activate the Make Backup window shown below.

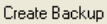


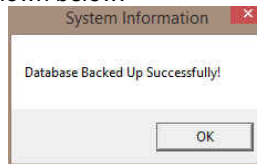
6. Click on the  file location button to activate the Choose backup file name window.

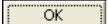
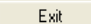


7. Utilize this window to select or create a new file name as well as direct the file to any current folder on your computer. Once done click on the  **Save** button. This will choose or create the file and show the user the correct path and file name in the window as shown above.



8. Click on the  button. If created successfully a system message will be generated stating Database Backed Up Successfully shown below.



9. Click on the  button to acknowledge this window.
10. Click on the  button to escape the Power*Suite Database manager.