

Power*Curve Floating License Installation Procedure


1.) Insert Power*Suite CD V11 into the CD Rom Drive of your Computer.

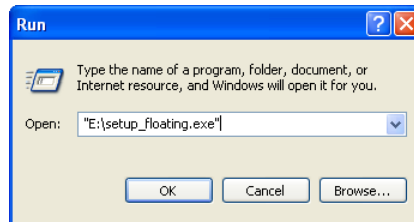


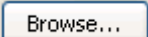
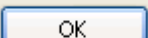
2.) If the Autorun works the CD ROM should be activated automatically and you will see the Window above. **Select Install Power*Suite. If the CD does not Autorun move ahead to Step 4.**

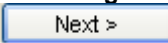


3.) Select the **Install Power*Curve Floating License** selection in the Install Power*Suite section. Skip to **Step 6.**

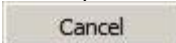
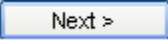
4.) Click on the  **start** button on your task bar and then click on the **Run** selection. This will activate the Run window.

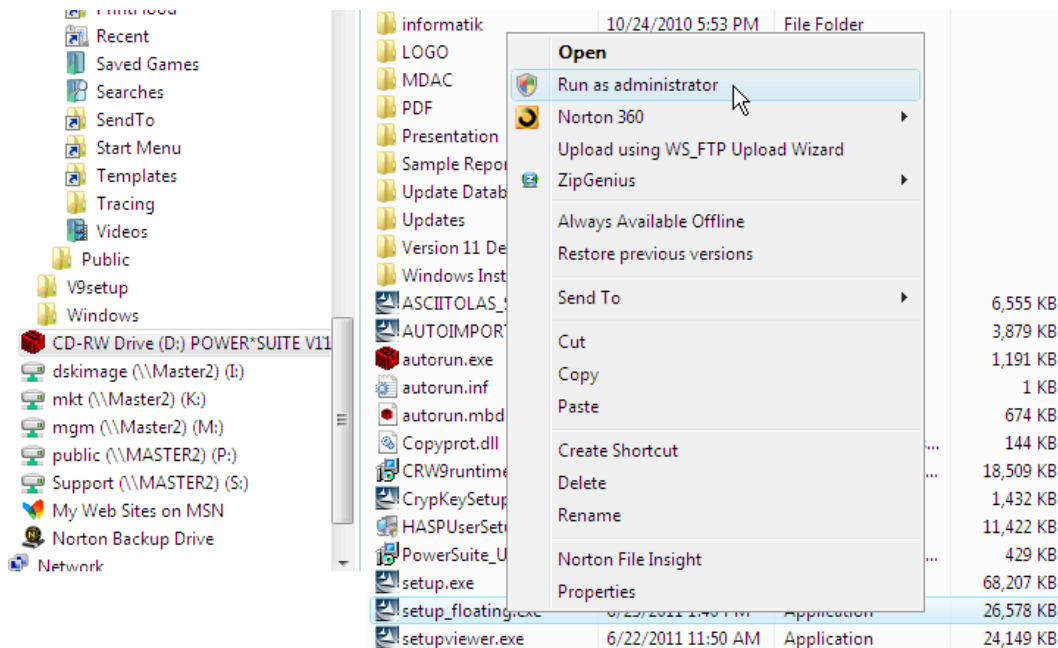



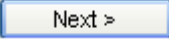
5.) Click on the  **Browse...** button and select the **setup_floating.exe** from the CDrom drive. Click on the  **OK** button in the Run window.

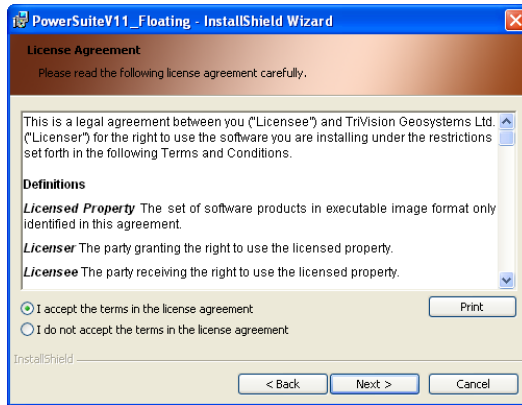
- 6.) a.) This will activate the Install Shield setup followed by the Windows Install window and the **Power*Suite Welcome Message** Window. if your computer is running on **XP or an older Operating System** Click on the  button.

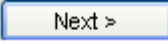



- 6.) b.) If your computer is running on **Microsoft Windows 7 or Microsoft Vista operating systems** click on the  button. **Open up the CDROM** in either my computer or windows explorer and right click on the **setup_floating.exe** and select **Run as Administrator**. This will again activate the Install Shield setup followed by the Windows Install window and the **Power*Suite Welcome Message** Window shown above. Click on the  button.

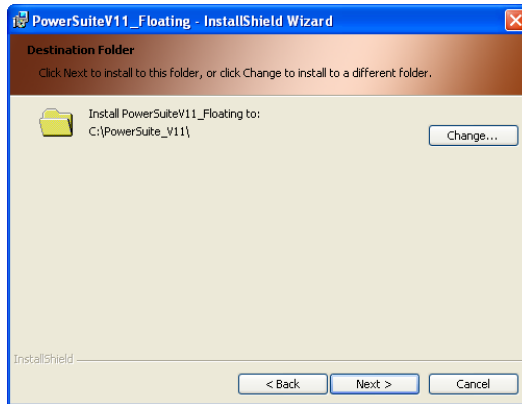



- 7.) This will activate the License Agreement window. Click on the  beside **I accept the terms in the license agreement**. Then click on the  button.

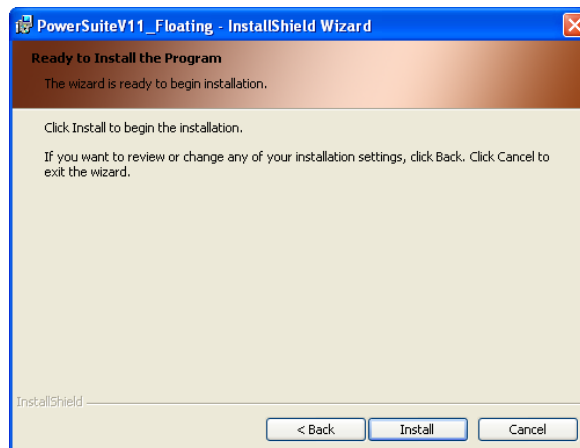


8.) This will activate the **Destination Folder** window with **C:\POWERSUITE_V11** as the default location. If this is where the initial Install for PowerSuite Version 11 was Click on the  button.

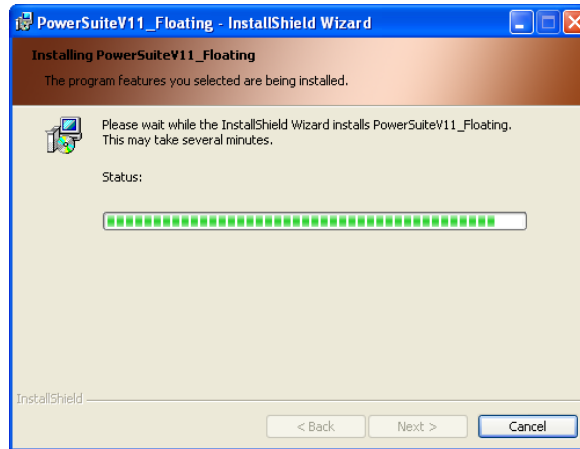
If this is not the installed folder for PowerSuite Version 11 the user must change the destination folder by clicking on the  button and finding the correct installation folder



9.) This will activate the **Ready to Install** window. Click on the  button.



10.) Next the user will see the Installing **Power*Suite V11 Floating window** copying files, writing to the registry, creating desktop icons, creating start menu folder etc. An example of this window can be seen below.



20.) Once the Update Installation is complete the **Install Wizard Completed** window shown below will be activated. **Click** on the **Finish** button for the Floating License install.

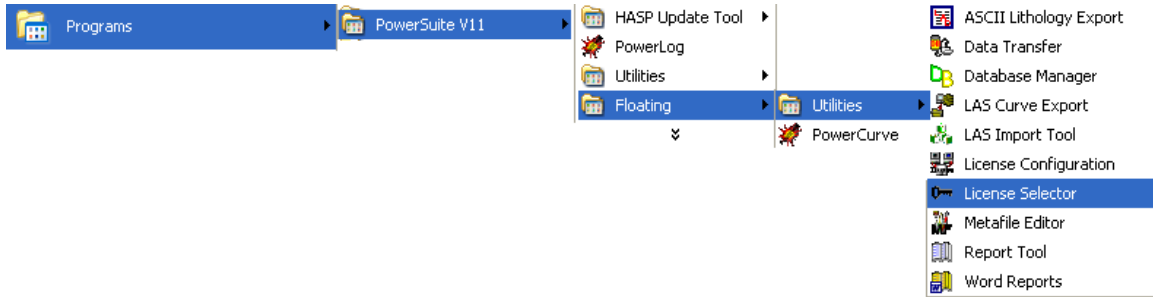



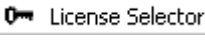
You will now have successfully installed the Power*Suite Floating Folder to the PowerSuite V11 folder in the Start menu and the floating folder inside the original install.

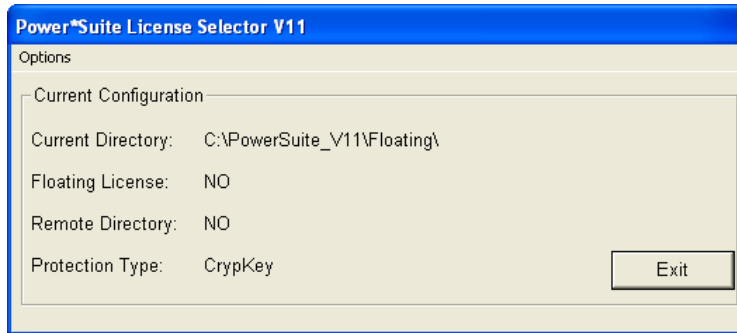
You may want to delete the unused Icons from your desktop. The ones you want to keep are the Power*Log and the Power*Curve Floating Icons.

HASP Key Activation for the Floating License Users

You will have to follow these procedures if you have a key just for the Power*Curve as in this case we do default it to the Crypkey setting.



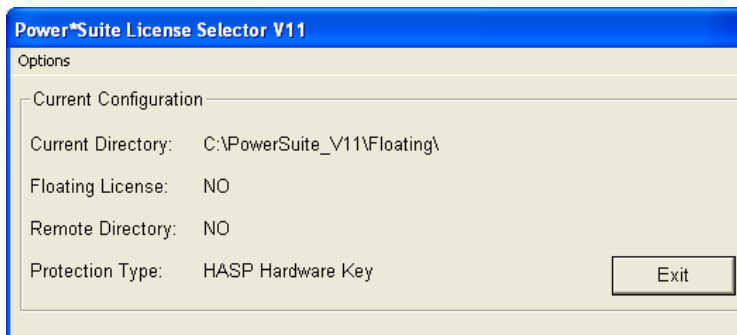
1.) To activate the Power*Suite License Selector click on the  **start** button on the toolbar and click on **All Programs** and select **POWER*SUITE_V11**. Select **Floating**, then **Utilities-Floating** and click on the  **License Selector** selection as shown above. This will activate the License Selector window.




2.) Click on the **Options** selection to view the pull down menu.



3.) **Select HASP**. The Protection type should read HASP Hardware Key as viewed in the Power*Suite License Selector window shown below.



4.) Click on the  **Exit** button

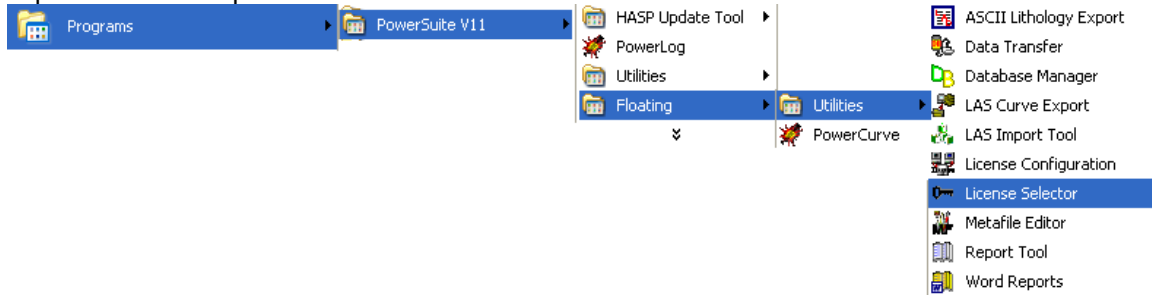
You are now ready to run either Power*Log, Power*Curve or Power*Core depending on your Hasp Key and its authorization.



Crypkey (Software) License Activation [Remote]

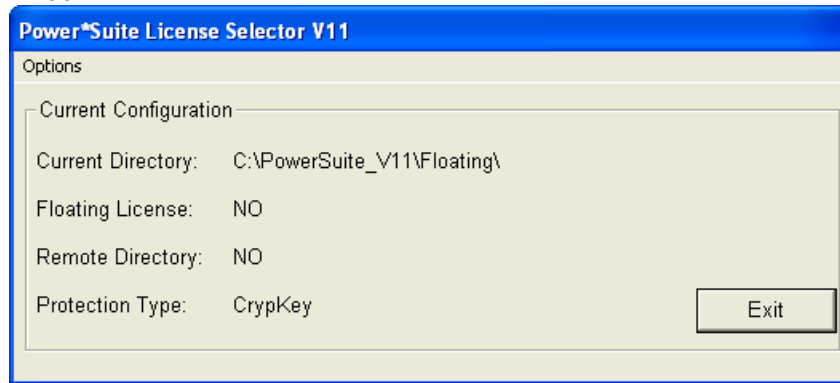
The Crypkey Authorization (Remote) licensing has to be done by Trivision Geosystems Ltd. on a Network Server. To activate a trial or permanent Remote Crypkey license please call our office @ (403) 777-9454. The user should refer to the License Configuration section in the manual to generate a site code. Each machine should be loaded the setup, latest patch / update as well as the crystal reports. Once this is done each machine on the network can be configured to look at eh Network License file as setup previously.

Each individual Computer must be done this way. Refer to how to Install PowerSuite Version 11 instructions for installing the application.

This procedure sets up the License.ini file that sits in the Powersuite_V11 folder. This file can be copied and can be pushed out to all the network users.




1. To activate the Power*Suite License Selector click on the  **start** button on the taskbar and click on **All Programs** and select **POWER*SUITE_V11**. Then, select **Floating** select **Utilities** and click on the  **License Selector** selection. This will activate the License Selector window.

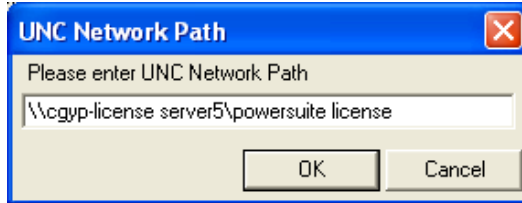


2. Click on the **Options** selection to view the pull down menu.

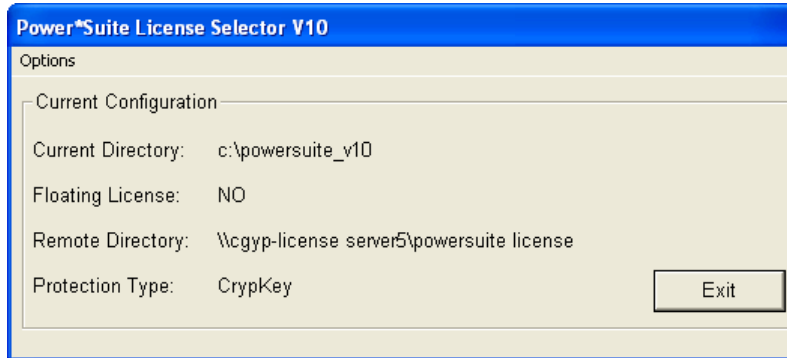



3. Select **Crypkey** to activate a pop-out menu.
4. Select **Remote** to activate another pop-out menu.
5. Select either the **UNC Network Path** or the **Mapped Network Drive** selection to direct the Power*Suite applications to the location of the licensing files. The Protection type should read Crypkey as viewed in the Power*Suite License Selector window as well as the path to the remote directory where the license files are located as shown above. Refer to step 6 or 7 depending on your application.

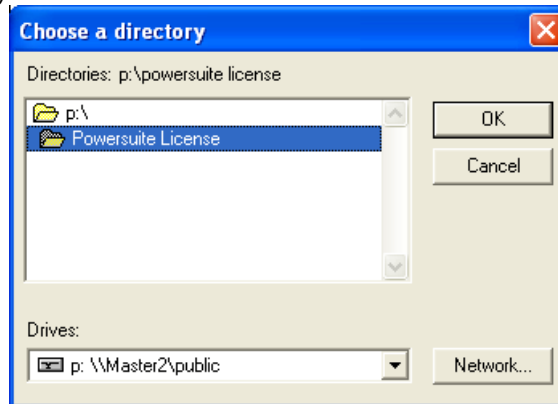
6. **UNC Network Path** will activate a window in which the user should type in the path to the Crypkey License files as shown below and then **click** on the  **button**.



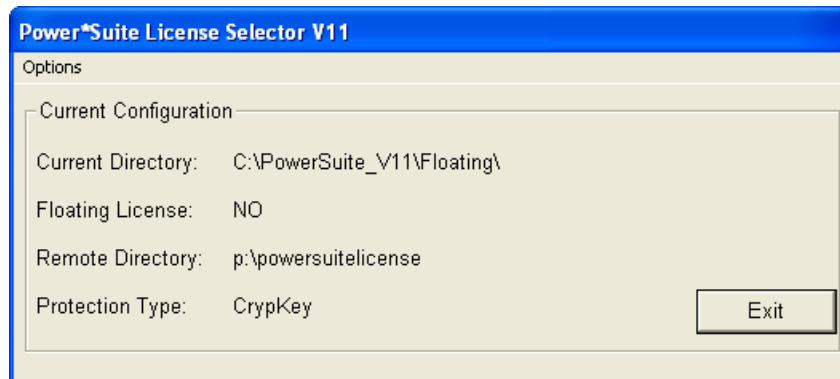
The result of step 6 should look like the picture shown on the next page.



7. **Mapped Network Drive** will open a window in which the user will select the drive and directory in which the Crypkey License files reside and then **click** on the  **button**.



The result of step 7 should look like the picture shown below.



8. **Click** on the  **button**