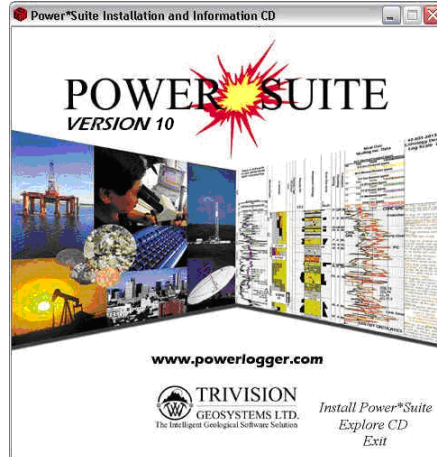


Hasp Hardware Keys


We have adapted our authorization from Version 3.0 onward with a Hasp Hardware Key. Once a Power*Suite program is loaded on a machine the user has simply to attach a Hasp Hardware key to the Parallel Port on their computer. The program is initially installed and protected by a software program. We have utilized a Software Authorization Program called Crypkey. Hasp Device Driver Installation

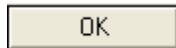
1. **Insert Power*Suite CD V10** into the CD Rom Drive of your Computer.



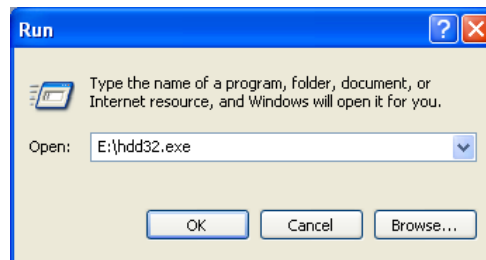
2. If the Autorun works the CD ROM should be activated automatically and you will see the Window above. **Select Install Power*Suite. If the CD does not Autorun move ahead to Step 4.**



3. **Select the Hardware Key Driver Only** selection in the Install Power*Suite section. Skip to **Step 6**.
4. **Click** on the  **start** button on your task bar and then **click** on the **Run** selection. This will activate the Run window.
5. Browse and select the **hdd32.exe** from the root drive of the the cd rom drive. Then **click** on the



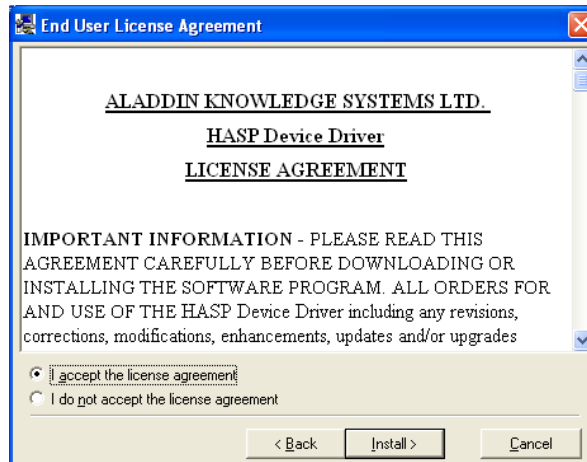
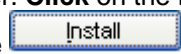
button in the Run window.



6. This will initiate the **Hasp4 Device Driver Installation** welcome window. **Click** on the **Next >** button.



5. This will activate the End User License Agreement for the Hasp Driver. **Click** on the radio button beside **I accept the license agreement**. Then **click** on the **Install** button.



6. This will initiate the install windows for the HASP device drivers. When the installation is complete the program will activate the Hasp4 Device drivers Installation Finished window. **Click** on the **Finish** button

