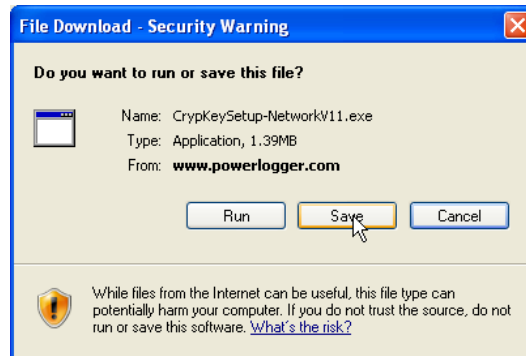
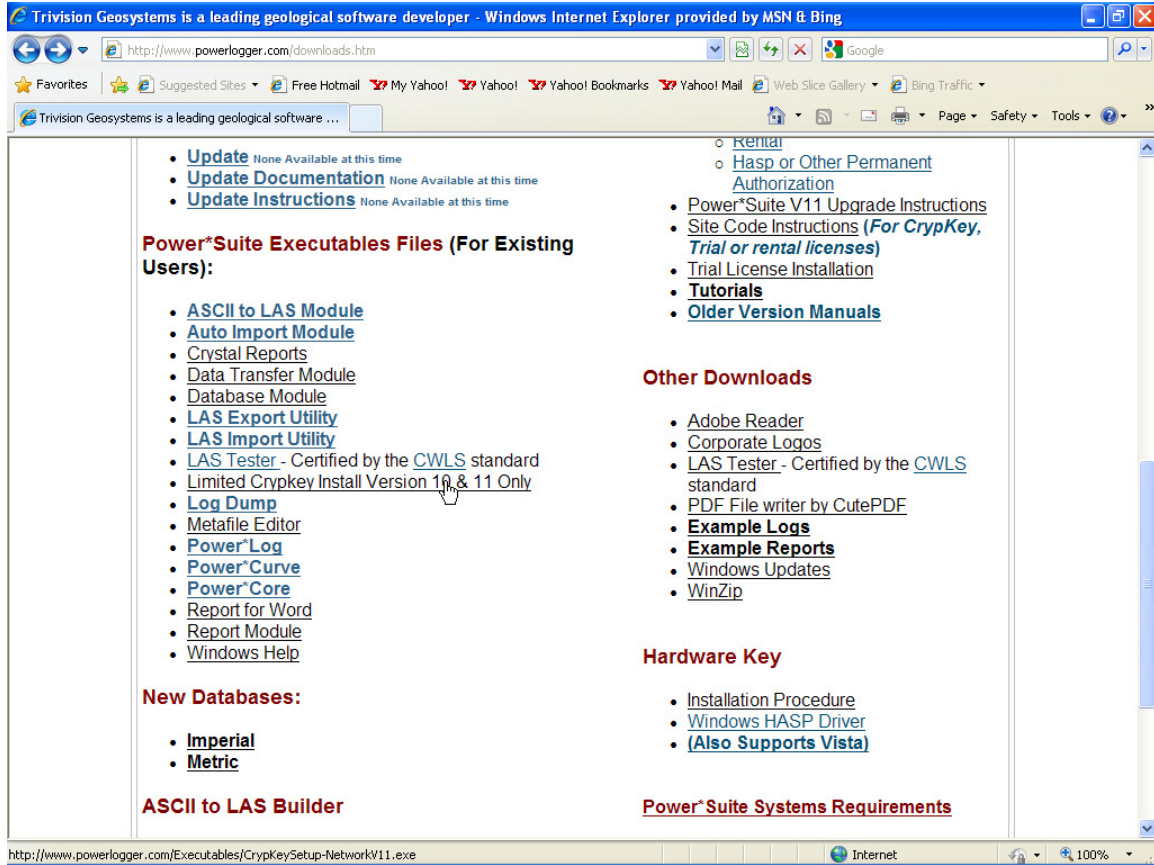
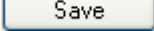
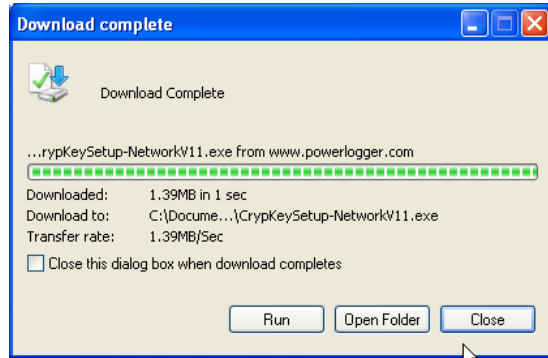
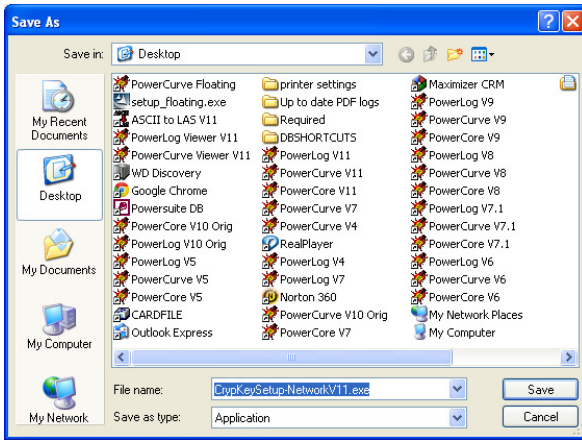


Crypkey Network Installation Procedures

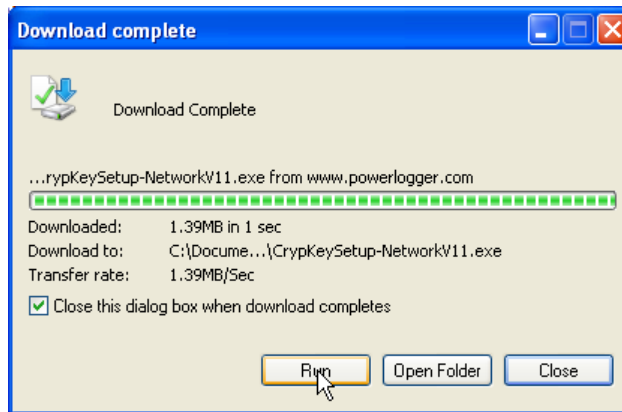
1.) Go to our websites download page <http://www.powerlogger.com/downloads.htm> and download the file **Limited Crypkey Install Version 10 &11 Only** –form the Executables portion of the page..



2.) Click on the  button the file to a location that you can find. Maybe the desktop.



- 3.) This will activate another download window indicating download is complete. **Click** on the **Run** button or locate the file **CrypKeySetup-NetworkV11.exe** and double click on it. This will activate the self extractor.

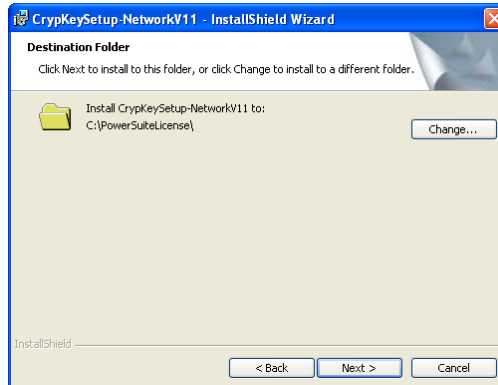
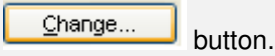


- 4.) This will activate the Install Shield setup followed by the Windows Install window and the **Power*Suite Crypkey Installer Welcome Message Window**. **Click** on the **Next >** button.

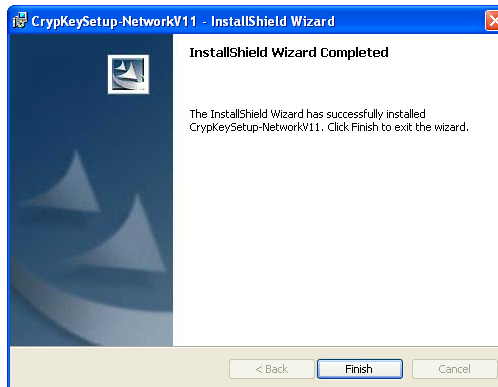


- 5.) This will activate the **Destination Folder** window with **C:\PowersuiteLicense** as the default location. **Click** on the **Next >** button.

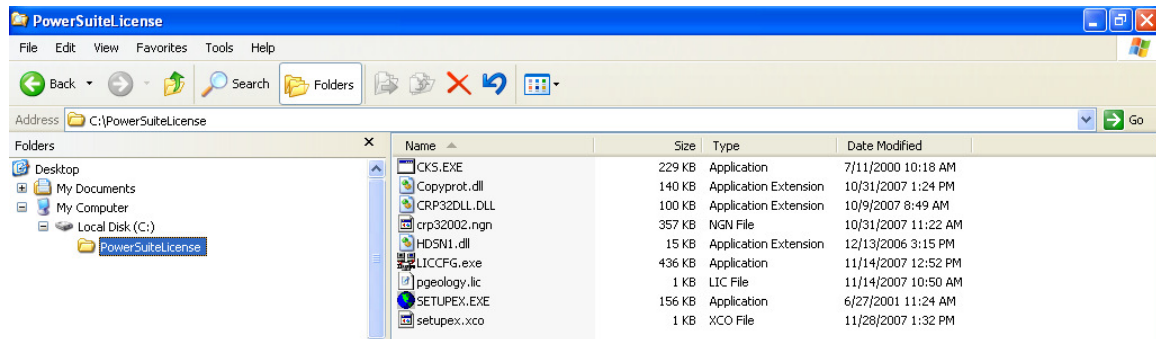
The User has the ability to change the destination folder if required by clicking on the




6.) Once the Installation is complete the **Install Wizard Completed** window shown below will be activated. Click on the **Finish** button.

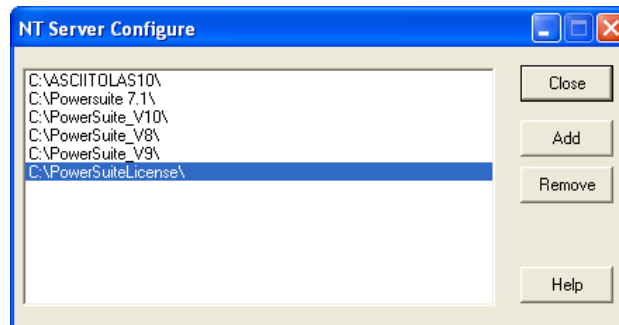


7.) If this was installed successfully you will have a folder on the Network Drive with the name that was given in Step 6 with the files as shown below.

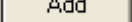


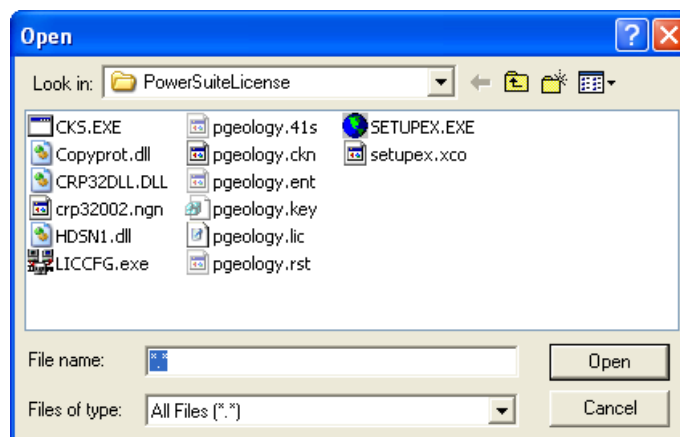
Crypkey Service Confirmation Procedure

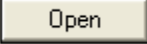
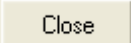
1. To view if the correct folder has been given the crypkey service rights you can view this by going into the **windows explorer** and go to the **Windows** folder (WinNT) or operating system folder and **double click** on a file named **ckconfig.exe**.
2. This will activate the window as shown below. You may get a Ckconfig window with a Note as shown below. **Click** on the  **button** and the NT Server Configure window will be activated.



Remember to give all users full read and write priveledges to this folder as well as a view as the license files have to written and removed as the user access the PowerSuite license.

3. If you do not see the PowersuiteLicense folder **click** on the  **button**. This will activate the Open window.

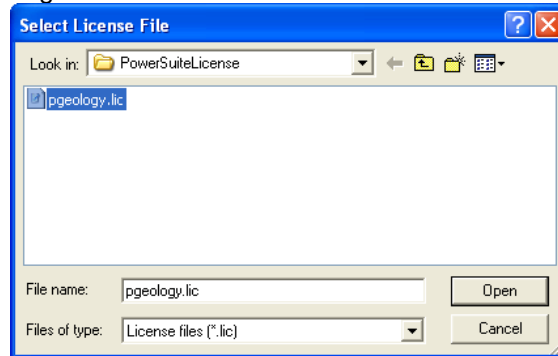


4. **Browse** to find the install directory and **double click on any file** in the install folder (in our case the PowersuiteLicense. Or **click on any file name** and **click** on the  **button**
5. Then **click** on the  **button**.
6. This folder created must have full read write priveledges for all users and all the user must also see the folder through the browse command.

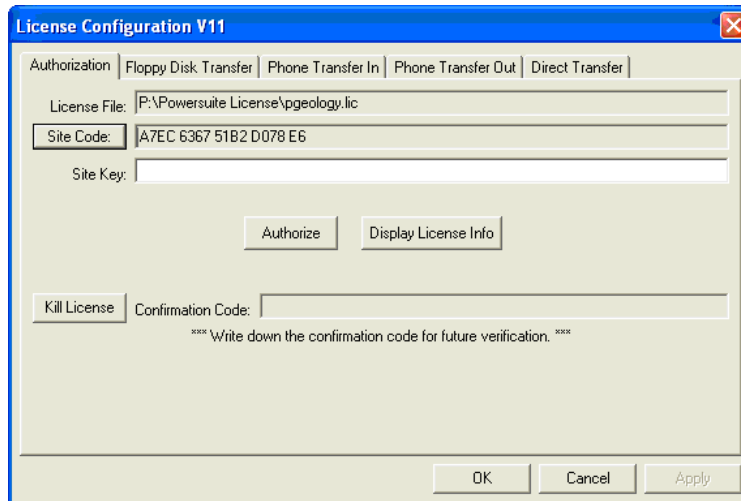
Network Crypkey Power*Suite License Authorization

The user will now have to get a Network license activation from Trivision Geosystems Ltd.

- 1) If this is a virtual server or a regular server it is best to access the server through the browse command to the shared folder that was created ie [\\servername\powersuitelicensing](http://servername/powersuitelicensing). Then you can launch the liccfg.exe from there.



- 2.) **Click** on the **pgeology.lic** file name in the Crypkey Network installation folder and then **click** on the **Open** button in the **Select License File** window to proceed.
- 3.) Acknowledge both the subsequent error message and the contact message by **clicking** on the **OK** buttons. This will now activate the **License Configuration V11** window which will default to the Authorization Tab.



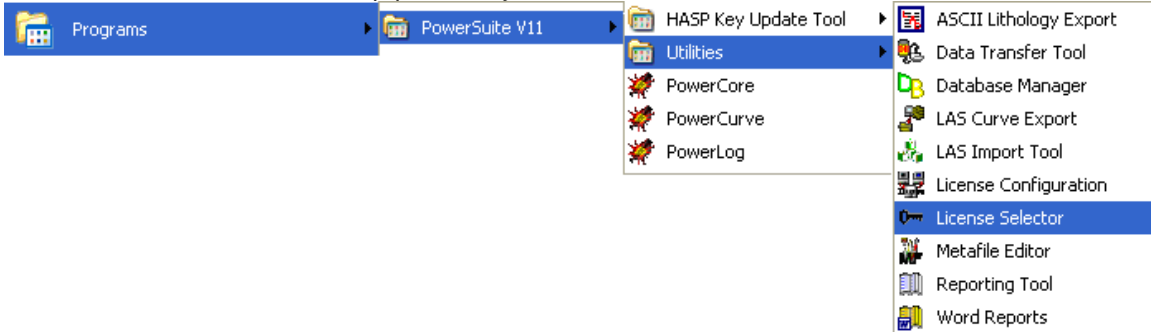
- 4.) **Click** on the **Site Code** button within the window.
- 5.) This will activate a System message stating "Site Code generation may take a few minutes. Do you wish to continue?" **Click** on the **Yes** button.
- 6.) The *Site Code* will be generated and can then be displayed in the *Site Code* field. This number can be written down, copied and pasted and sent to Trivision via phone at (403) 777-9454, or email at support@powerlogger.com.
- 7.) Trivision will generate a *Site Key*. This number will have coded within it the number of days the program will be activated for and which modules you wish to purchase or evaluate. Type the site key number within the *Site Key* Field.



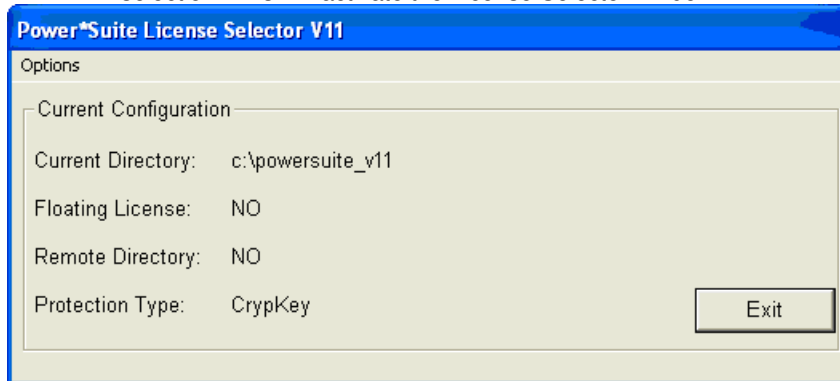
8.) Click on the **Authorize** button. If successful you will get a message indicating so.

Crypkey (Software) License Activation [Remote]

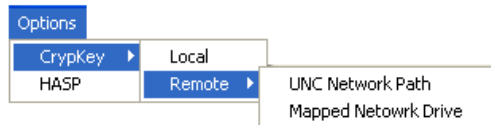
The Crypkey Authorization (Remote) licensing has to be done by Trivision Geosystems Ltd. on a Network Server. To activate a trial or permanent Remote Crypkey license please call our office @ (403) 777-9454. The user should refer to the License Configuration section in the manual to generate a site code. Each machine should be loaded the setup, latest patch / update as well as the crystal reports. Once this is done each machine on the network can be configured to look at eh Network License file as setup previously.



1. To activate the Power*Suite License Selector click on the **start** button on the taskbar and click on **All Programs** and select **POWER*SUITE_V11**. Then, select **Utilities** and click on the **License Selector** selection. This will activate the License Selector window.



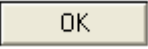
2.) Click on the **Options** selection to view the pull down menu.

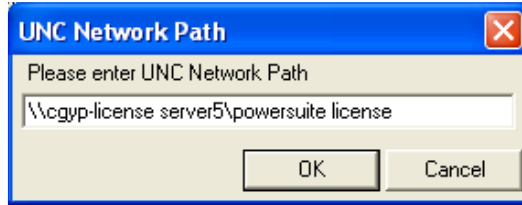


- 3.) Select **Crypkey** to activate a pop-out menu.
- 4.) Select **Remote** to activate another pop-out menu.
- 5.) Select the **UNC Network Path** selection to direct the Power*Suite applications to the location of the licensing files. {\\cgyp-licensenserver\Powersuite license}

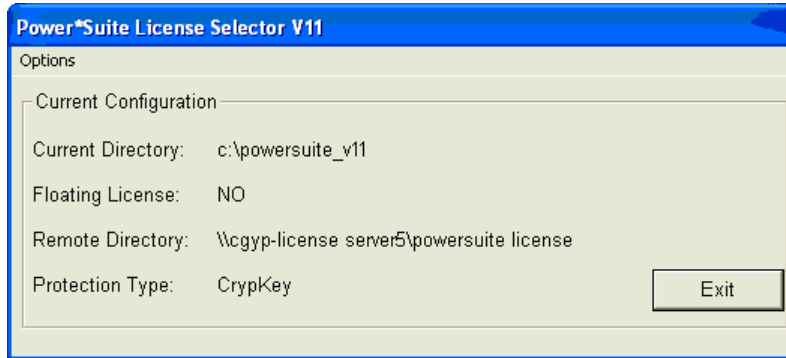
Note: \\cgyp-licensenserver\Powersuite license\ is an example of the UNC network path.

a.) UNC Network Path will activate a window in which the user should type in the path to the Crypkey License files as shown below and then click on the **OK** button.

- b.) **UNC Network Path** will activate a window in which the user should type in the path to the Crypkey License files as shown below and then **click** on the  **button.**



The result of step 5 should look like the picture shown below.



Each individual Computer must be done this way. Refer to how to Install PowerSuite Version 11 instructions for installing the application.

This procedure sets up the License.ini file that sits in the Powersuite_V11 folder. This file can be copied and can be pushed out to all the network users.