

## Power\*Suite Viewer Installation Procedure

home products downloads example logs support contact links

TRIVISION  
GEOSYSTEMS LTD.  
The Intelligent Geological Software Solution

Intelligent Software

### DOWNLOADS

To download the newest version of Power\*Log, Power\*Curve and Power\*Core, simply click on the selection below. Once the download is complete, simply follow the installation instructions. You will be given a seven (7) day trial period.

For more information see our [Free Trial Page](#)

#### POWER\*SUITE V11 - JUN/11 RELEASE

- [Office Viewer \*\*New for Version 11\*\*](#)
  - [Office Viewer Installation Procedures](#)
- [Full Power\\*Suite Installation & 7 Day Demo](#)
  - [Demos Installation Procedures](#)
- [Power\\*Core Demo](#)
  - [Demos Installation Procedures](#)
- [Power\\*Curve Floating License](#)
  - [Power\\*Curve Floating License Installation Procedures:](#)
    - [Rental Installation Procedures](#)
    - [Hasp or Network Crypkey Installation Procedures](#)

ASCII TO LAS BUILDER


#### NEW DATABASES:

- [Imperial](#)
- [Metric](#)

POWER\*SUITE/TRIVISION POWERPOINT OVERVIEW - [DOWNLOAD](#)


If you are looking for Drivers click here and visit our [Drivers page](#)

#### MANUALS, TUTORIALS AND OTHER INSTALLATION PROCEDURES

(Requires PDF) 

- [Complete User Manual](#)
- [HASP Key Upgrade](#)
- [Network Installation Procedures](#)
- [Power\\*Suite V11 Upgrade Instructions](#)
- [Site Code Instructions \(For CrypKey, Trial or rental\)](#)

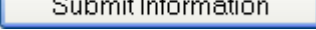
- 1.) Click on the **Office Viewer** from our downloads page [www.powerlogger.com/downloads.htm](http://www.powerlogger.com/downloads.htm). This will activate a Submit Personnel Information Page.

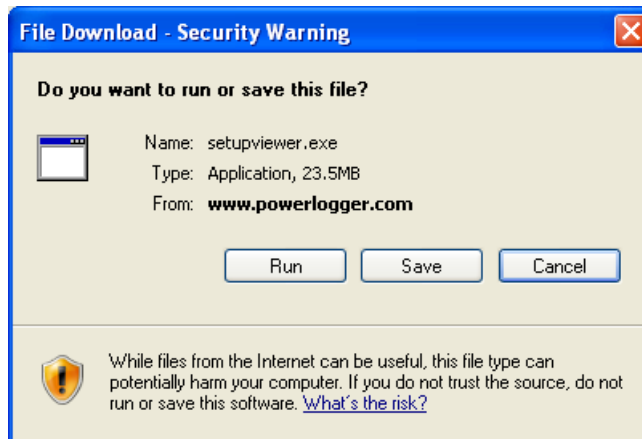


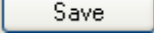
**Customer Information:**  
*Please fill out the following form prior to downloading Free Viewer.  
 (\*Asterisk marks required field)*

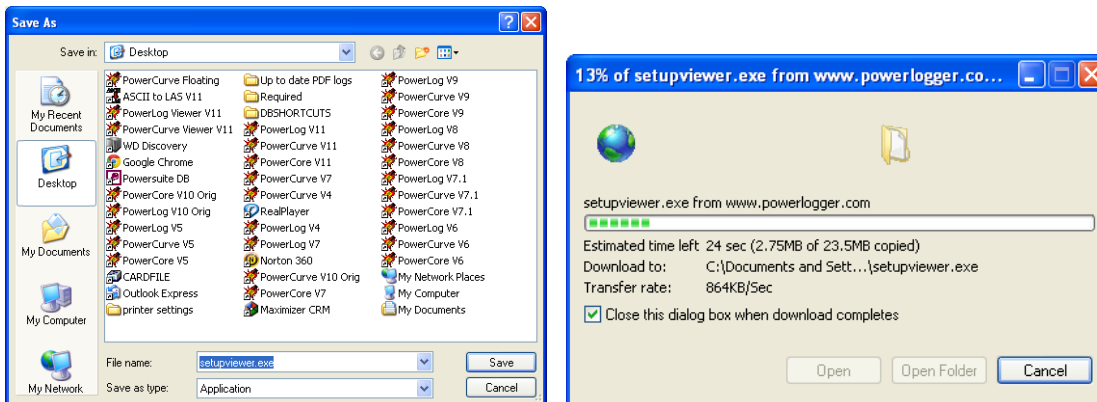
First Name*	Bob
Last Name*	Sephton
Title	President
Organization*	Trivision Geosystems Ltd.
Phone Number*	403-777-9454
Email Address*	bob.sephton@powerlogger.com
What Operating System do you currently use?*	Windows 7

07 July 2011

2.) Filled in the mandatory fields and click on the  button. This will activate the download file.


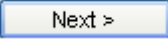


3.) Click on the  button the file to a location that you can find. Maybe the desktop.


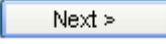


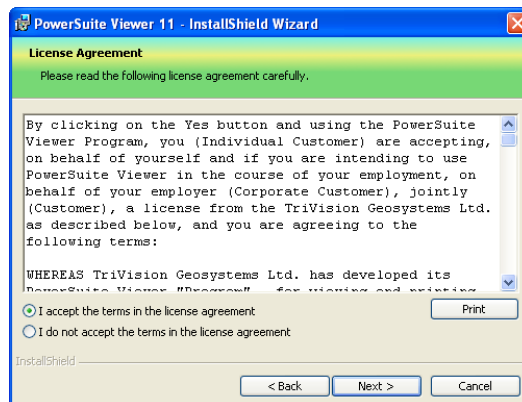
- 4.) Depending on your computer settings this will run automatically or you may have to run the file. If it is on your desktop **double click** on the **Setupviewer.exe** file. This will activate a message shown below.

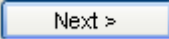



- 5.) Click on the  button and this will initiate the setup
- 6.) This will activate the Install Shield setup followed by the Windows Install window and the **Power\*Suite Welcome Message Window**. Click on the  button.

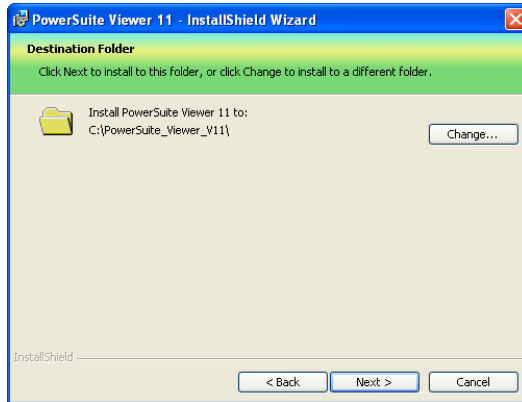


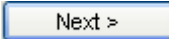
- 4.) This will activate the License Agreement window. Click on the  beside **I accept the terms in the license agreement**. Then click on the  button.




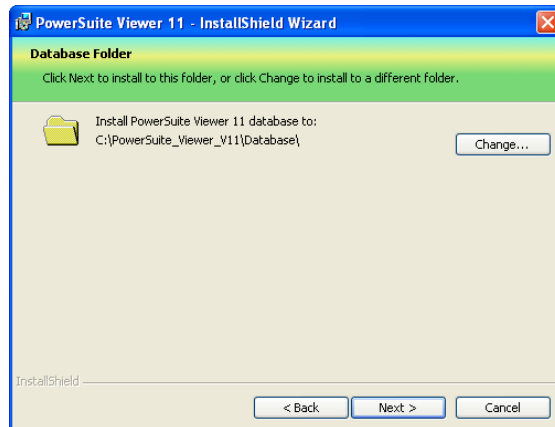
- 5.) This will activate the **Destination Folder** window with **C:\POWERSUITE\_Viewer\_V11** as the default location. Click on the  button.


The User has the ability to change the destination folder if required by clicking on the  button. This is not recommended.

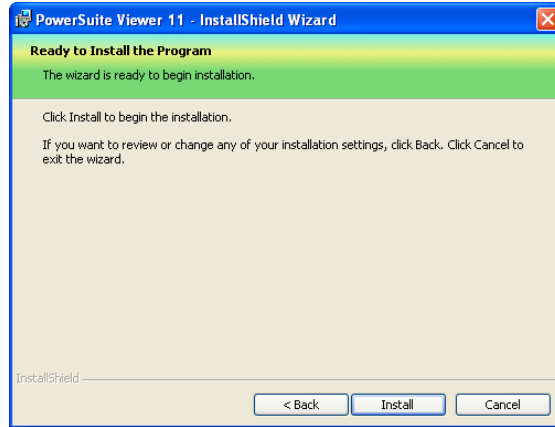


- 6.) This will activate the **Database Folder Location** window with **C:\POWERSUITE\_Viewer\_V11\Database** as the default location. Click on the  button.

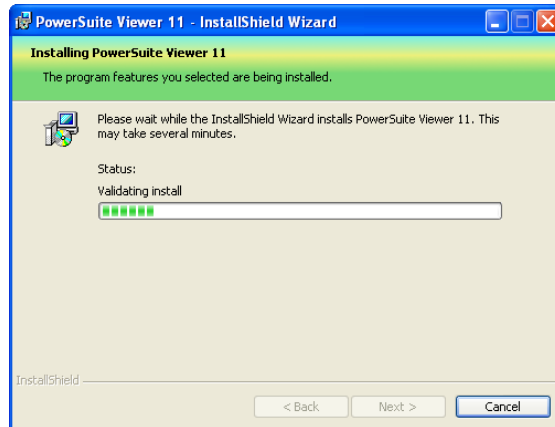
The user has the ability to change the database destination folder by clicking on the  button. This is recommended if you are working with a LAN system where the Network directory is being backed up on a regular basis. If not the default destination folder is recommended.




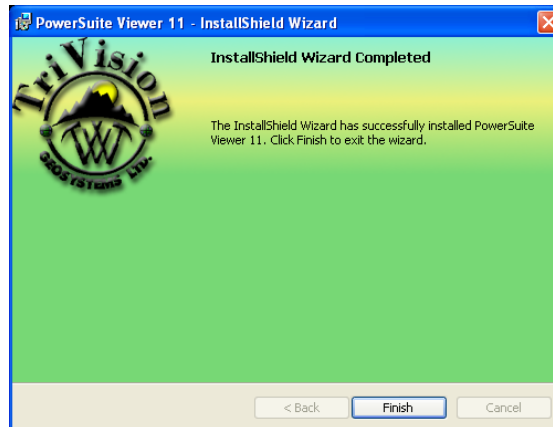
- 7.) This will activate the Ready to Install window. Click on the  button.



- 8.) Next the user will see the Installing **Power\*Suite window** copying files, writing to the registry, creating desktop icons, creating start menu folder, ODBC components etc. An example of this window can be seen below.



- 9.) Once the Update Installation is complete the **Install Wizard Completed** window shown below will be activated. **Click on the  buttons for the Office Viewer install..**



You will now have successfully installed the Power\*Suite Version 11 Office Viewer.