

Power*Suite PDF Printing Procedures

Longer pages for Plotters

Striplog Printing

(refer to page 79 in the User Manual)
(On-line help press F1 key on keypad)

You can only print the active log at the time when the Print Log Window is implemented. Also, once you are in the Print window you can not edit the log. The printing is WYSIWYG (What you see is what you get), so before you activate the Print Log window the log has to be what you want to print with respect to track widths, ordering, active layers within the tracks and layer ordering within a track. All these things can be done in the log configuration builder button located on the toolbar or under Options on the menu bar.

- 1.) **Open the Well / Log** and make sure the Tracks and layers are organized as you would like them then **proceed to step 2.**
- 2.) To edit the Bore Hole Log Title which you will be printing in this example. **Click on Edit** located on the menu bar, and then **click on Core / Sample Header** and then **click on the Standard format** to activate the Core / Sample Header Window.

Interval	
Top Depth	Base Depth
140	536

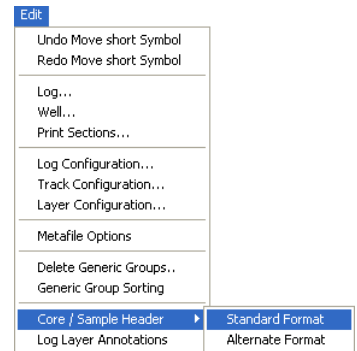
Depth Corrected Remark: LWD was utilized

Quality Remark: Good Samples

Remarks: This well was drilled in a from 12:25 to 12:27. This is a Measured Depth Log at a printed scale of 1:240. See also TVD and SSL logs printed @ 1:240. Zone of interest Main Tidsdale Sand 523 meters.

Well Record Data

KB:	24.90
Ground Elev / Collar:	21.10
UTM Easting:	3124545.21
UTM Northing:	23452.23
Hole ID:	12-25-45-12 W4M

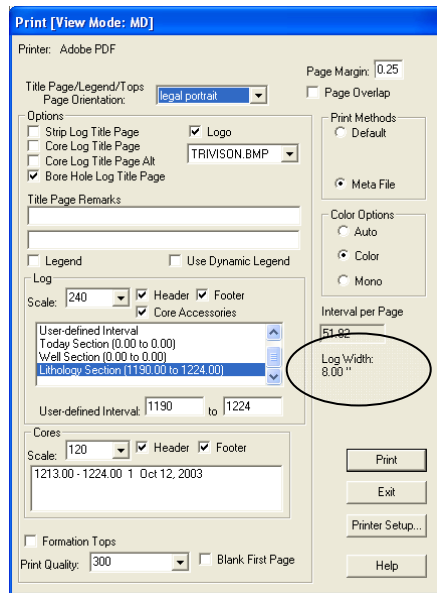


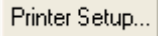
- 3.) Type in the appropriate fields as shown above. The yellow depth fields are mandatory. To edit the Well record data **click on the Edit Well button**. This will activate the Well record and fill in the appropriate fields in the well record window and then Save your information by **clicking on the Save button**.
- 4.) Once you have filled in all the information you require for the Bore Hole Log Header **click on the Save button**. This will activate the Shortcut options and **click on the Exit button**. An example of the abbreviated header is shown on the next page.

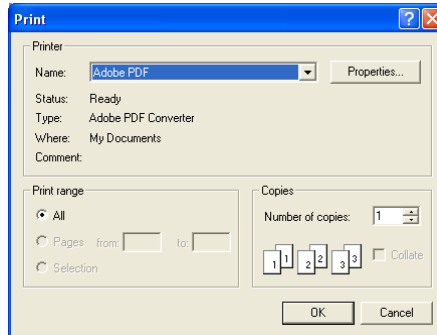
Bore Hole Log		
Well Name: ABC Oil Anywhere 12-25	Location: 12-25-45-12 W4M	Ground / Collar: 21.1 (m)
UWI: ABC Oil 12-25	KB: 24.9 (m)	UTM East: 3124545.21
Hole ID: 12-25-45-12 W4M	Sample Quality: Good Samples	UTM North: 23452.23
Logged Interval: 140 (m) to 536 (m)	Logged by: R.W. (Bob) Sephton	
	Date: Nov 20, 2010	
Depth Correction: LWD was utilized		
Remark: This well was drilled in a from 12-25 to 12-27. This is a Measured Depth Log at a printed scale of 1:240 See also TVD and SSL logs printed @ 1:240 Zone of interest Main Tidsdale Sand 523 meters.		




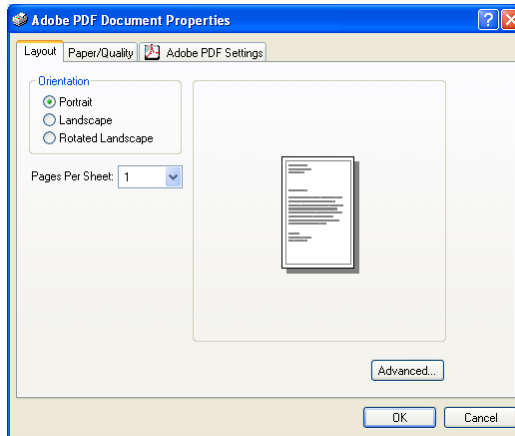
- 5.) Now you are ready to print an abbreviated Title page on top of your striplog. **Click** on the  **Print Log Icon** on the toolbar, or **click** on **File** located on the menu bar, and then **click** on **Print Log** to activate the Print Window.



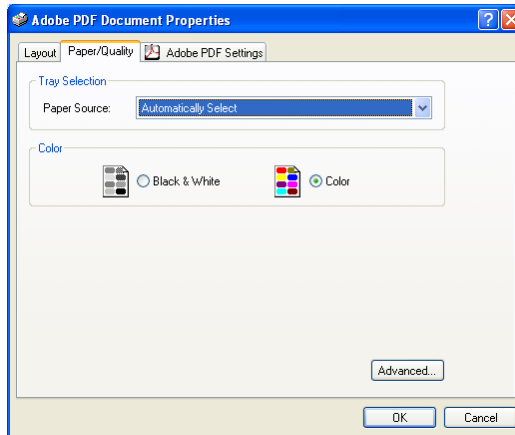
- 6.) Make a note to yourself the **Log width** before you go too much further as this measurement will be required later on in this procedure.
- 7.) **Click** on the  **button**. In this case I will be printing to Adobe Acrobat Version 8 and its printer setup window. Most of the other Versions or Writers have similar windows.



- 8.) **Click** on the  **button**. This will activate the window shown below.

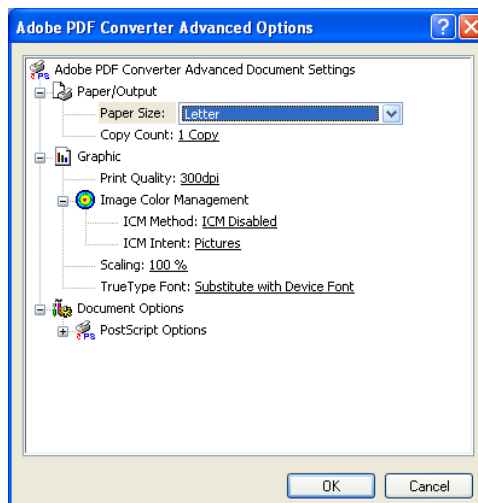


- 9.) In the Layout tab portion of the window, if you are printing a vertical log from **Power*Log / Core** you will want to select the radio button beside **portrait**. If you are printing form **Power*Curve** you will want to select the radio button beside **landscape**.

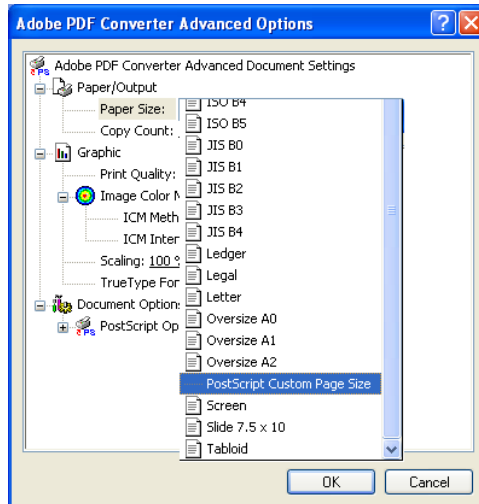


- 10.) In the **Paper / Quality tab** portion of the window you will select the default which is **automatically select** from the paper source and the radio button beside the **color printing** option.

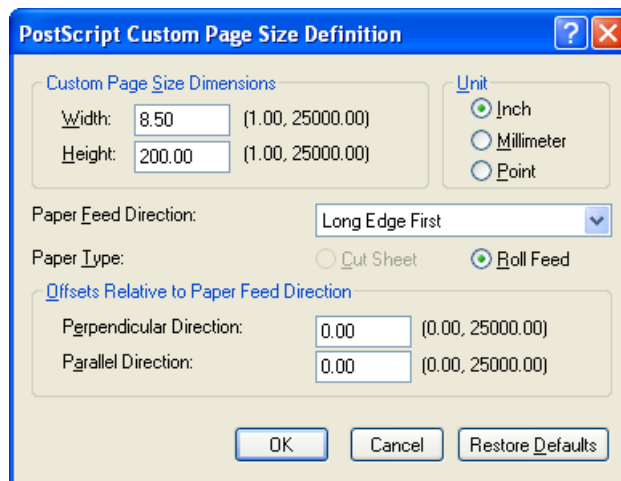
- 11.) **Click** on the **Advanced...** button either here or in the Layout tab portion of the window. This will activate the Adobe PDF Converter Advanced Options window as shown below.




12.) In the **Print Quality** select **300 dpi**. The default is normally 1200 dpi. The smaller dpi will create a smaller file size and the increased dpi is not necessary for our graphic output.



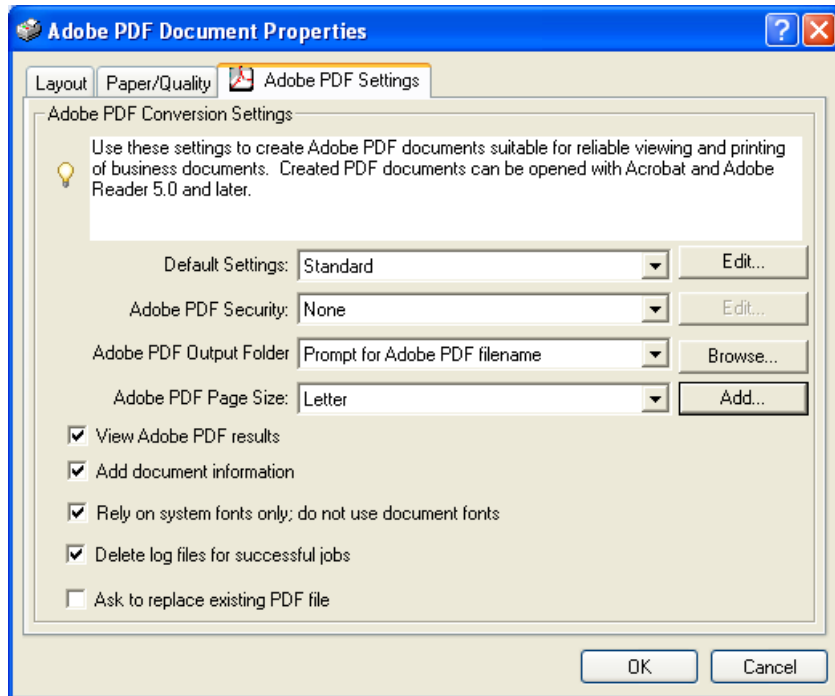
13.) Click on the **Paper Size** drop down arrow and select **PostScript Custom Page size** as shown above. This will activate the PostScript Custom Page size definition window shown below.

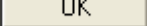


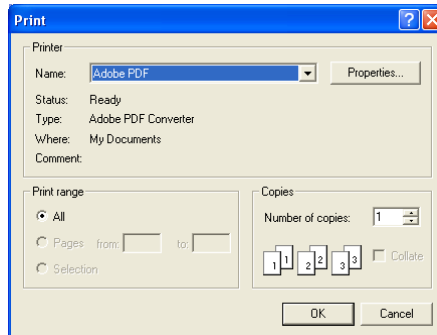
14.) Define the **page width** as $\frac{1}{2}$ " wider than the Log width you are printing. In our case 8.5" wide. Define the **page length** which is totally up to you. If you are sending this to town and they are printing this on a plotter and they do not want to waste paper you may want to make the paper length the carriage width of the plotter. Standard widths for plotters are either 36" or 42" wide. I believe the longest we can print is 200" as shown in this example. The default setting of the other selections of this window are good. Refer to the window above for the correct settings.

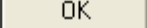
15.) Click on the  **button**. This will close this window and return you either to the Layout Tab or Paper / Quality tab.

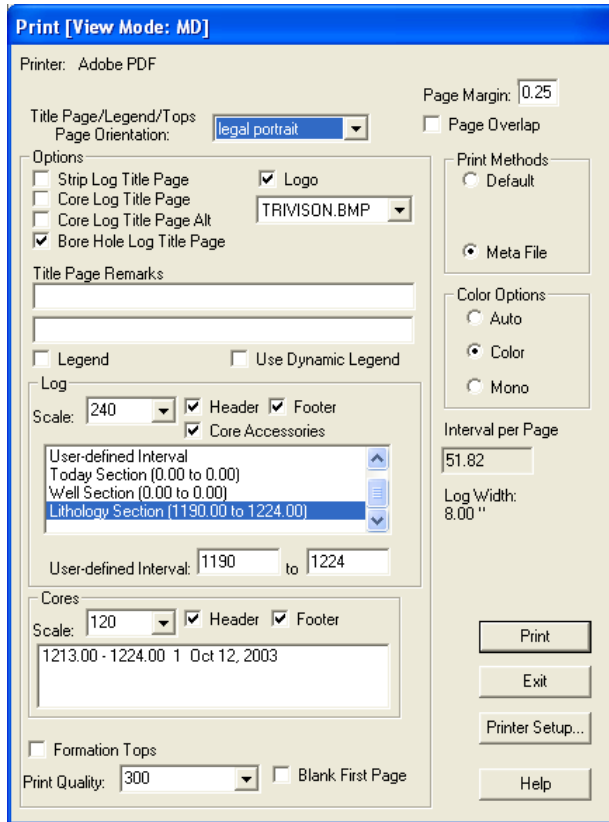
16.) You may want to see the **Adobe PDF settings tab**. Here you can make changes such as prompting for file names, viewing the PDF file after it is created etc. My settings are shown below. Yours may vary from these but you can check them all the same.



17.) Click on the  button. This will close this window and return you to the Print window.



18.) Click on the  button. This will close this window and return you to the Print Log window.



19.) If this is a striplog or chip sample log **activate** the **Bore Hole Log Title page** check box , if you wish to print out an abbreviated Striplog title page shown above.

Note: You will not print out the Striplog Title Page, the legend selections or the Formation tops as each one of these selections will create a custom page size that was defined earlier.

20.) In the Log portion of the Print window, **select** the **vertical scale** you wish to print the log, whether you want a **Track header and or footer** printed, and if you have a cored interval do you want the **core accessories** printed in the main log. **Click** the **check box** beside these selections to activate/deactivate these print selections.

21.) For a PDF output you will have to **make** the **page margin 0.25"** so that the print output is moved over from the left margin of the page. Otherwise the printer will not be able to print the left hand side of the log.

22.) **Page Overlap** is selected if you are printing to a single sheet printer and you wish some minor duplication on the top/bottom of subsequent pages.


23.) **Metafile** is selected if you are printing to Adobe or some other pdf writer.

24.) The user has five options in **Printing the main log** 1) None, 2) User-defined Interval, 3) Today Section, 4) Well Section and 5) Lithology Section.

- Option 1) **None**. If this option is selected (highlighted) this means that there will be no main log printed.
- Option 2) **User-defined Section**. If this option is selected (highlighted) this means that whatever is typed in the User-defined Interval fields will be printed as the main log.
- Option 3) **Today Section**. This option can be filled out by the wellsite geologist in the Export module of the program. This option was implemented to facilitate the operations geologist job so that they would not have to figure out what has

been updated on the striplog. **If this option is selected (highlighted) this means that whatever is viewed within the parenthesis will be printed as the main log.**

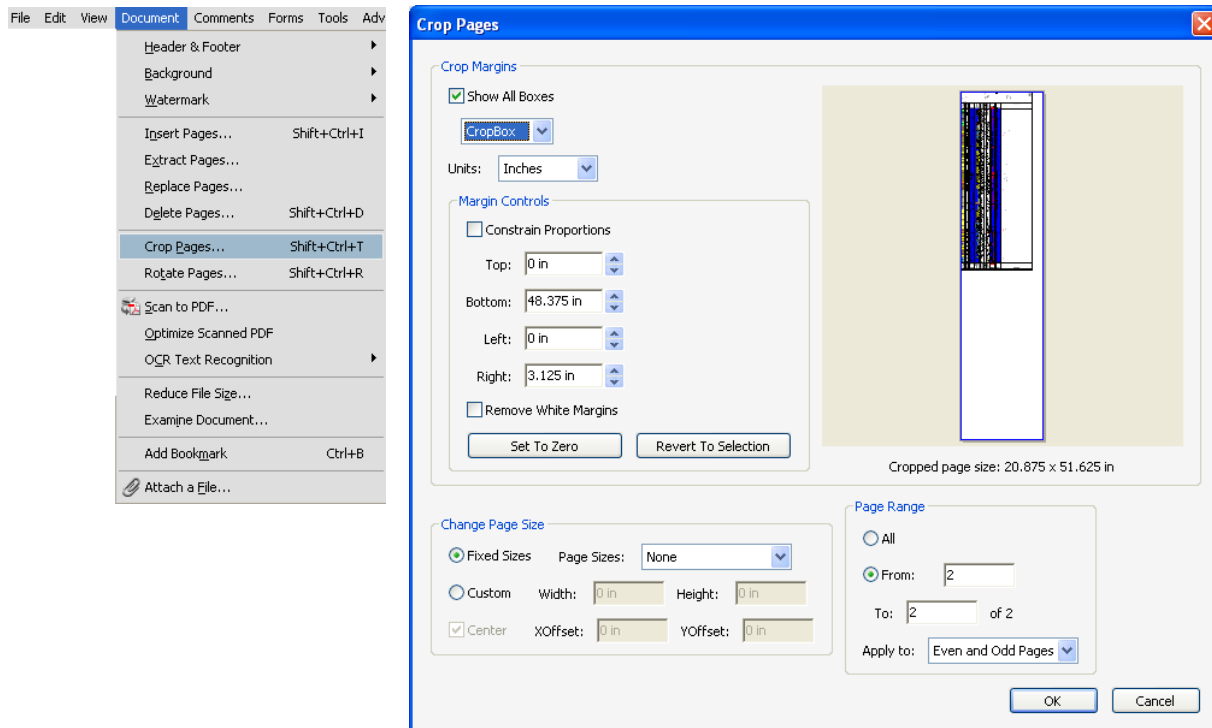
- Option 4) **Well Section**. This option can be filled out by the wellsite geologist in the Well Section of the program. This option has been implemented to suggest the print section for the entire log so as to incorporate any comments above and below the lithologic interval of the striplog. **If this option is selected (highlighted) this means that whatever is viewed within the parenthesis will be printed as the main log.**
- Option 5) **Lithology Interval**. This option is controlled by the lithologic intervals drawn on the striplog. **If this option is selected (highlighted) this means that whatever is viewed within the parenthesis will be printed as the main log.**

25.) Click on the  button to start printing. This will initiate the printing.

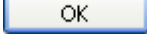
N.B. The Print Window settings including your paper size will now be automatically saved. The next time you go to print a striplog this configuration will be its defaults and it should facilitate the printing process. If you do make changes and you do not proceed with actually printing you will be prompted with a system message to Save your print settings.

26.) When the file is open the user may wish to crop the pages of any excess paper on the bottom of the print job as this will waste paper on the plotter. You can only do this if you have the Acrobat Writer.

27.) **Scroll to the bottom of the printed area** so you can see the extra white area on the bottom of the log. **Click on the Document pull down menu and select Crop Pages.**



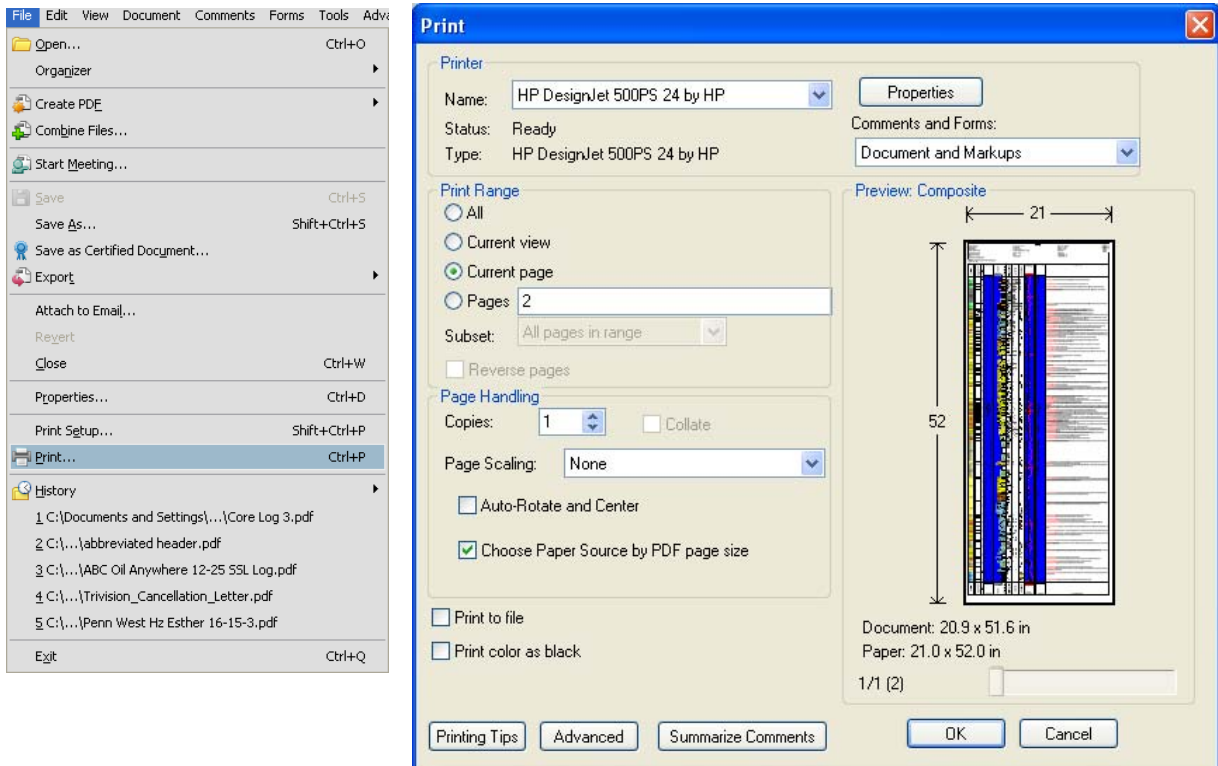
28.) In the example above the bottom of the printed document was cropped 48.375" and the right side cropped 3.125". The user can either **type in a value** or **use the up or down arrow** to refine your crop. You will see the crop margin on the smaller image within the window or on the main image if you are in the correct area. This will make the image smaller and waste less paper.

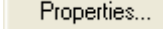
29.) Click on the  button. This will close the Crop window. Then Click on the file menu selection and select the Save selection.

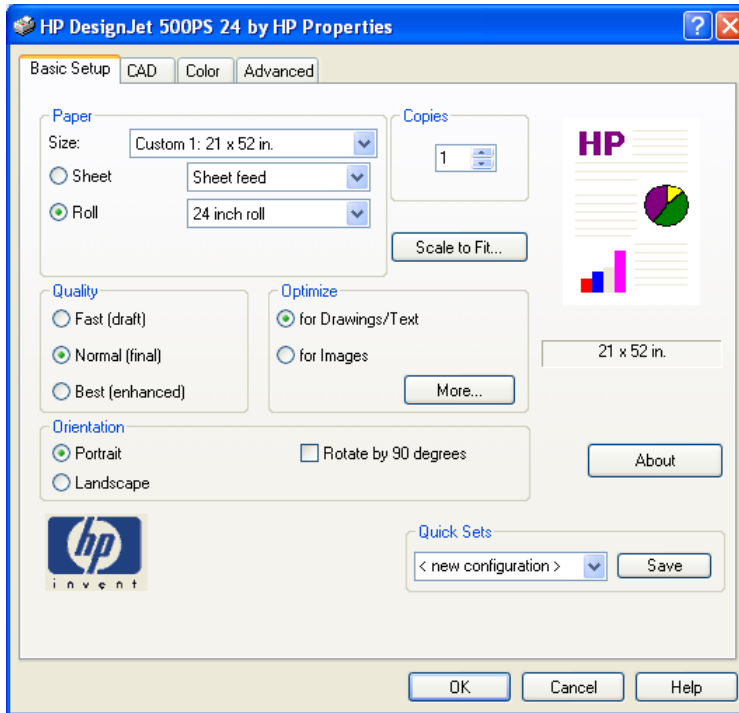
30.) You can now attach the PDF to your email or print the PDF to your plotter

Printing a PDF that has been modified to the printer carriage width

1. When the pdf file is opened in the PDF reader or writer application Click on the File menu and Select Print. This will activate the Print window options for the default printer as shown below.

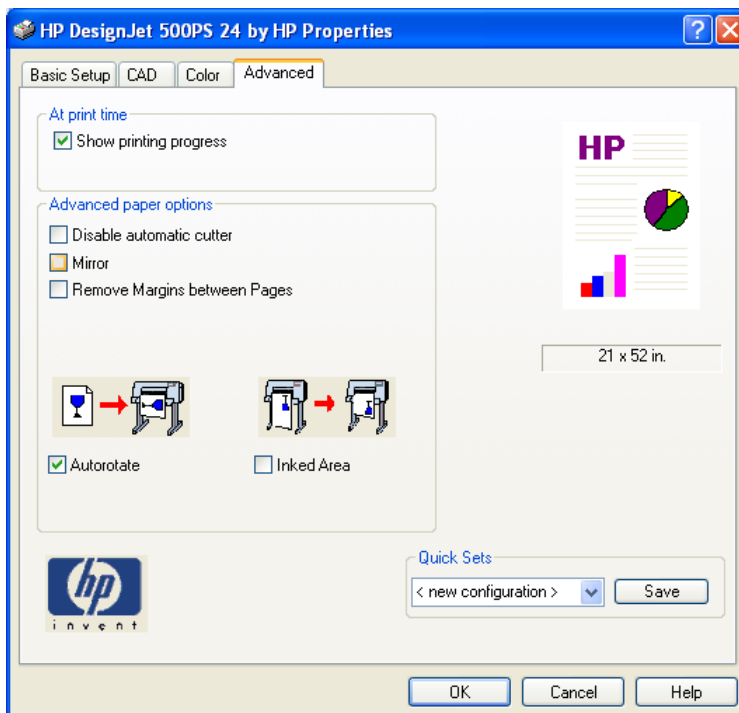


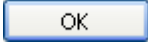

2. Click on the  button. This will activate print properties window for the selected printer as shown below. The default tab will be the basic setup.



3. Some things to look out for here is to make sure there is no scaling to fit page size going on. You can set the custom page size for each job but it is tedious. The better option in the main print window select choose paper source by PDF paper size.
4. **Click** on the **Advanced** tab. If the page has been printed to fit the width of the plotter and it is a vertical log then you will want to **activate the check box** beside the **Auto rotate selection**. Also if this is an 8.5"x11" single sheet print you can select in certain models of plotter to Remove Margin between pages to print a continuous log.

After all this process a little discouraging but good for the end user.



5. **Click** on the  **button**. This will close the Print setup window.
6. **Click** on the  **button**. This will initiate the print t the plotter..