

## Power\*Curve Floating License Installation Procedure

Trivision Geosystems is a leading geological software developer - Windows Internet Explorer provided by MSN & Bing

http://www.powerlogger.com/downloads.htm

### DOWNLOADS

To download the newest version of Power\*Log, Power\*Curve and Power\*Core, simply click on the selection below. Once the download is complete, simply follow the installation instructions. You will be given a seven (7) day trial period.

For more information see our [Free Trial Page](#)

**Power\*Suite V11 - Jun/11 Release**

- [Office Viewer \*\*New for Version 11\*\*](#)
- [Full Power\\*Suite Installation & 7 Day Demo](#)
- [Power\\*Core Demo](#)
- [Power\\*Curve Floating License](#)
- [ASCII to LAS Builder Only](#)

**Power\*Suite V11 Latest Update**

- [Update](#) None Available at this time
- [Update Documentation](#) None Available at this time
- [Update Instructions](#) None Available at this time


**Power\*Suite Executables Files (For Existing Users):**

- [ASCII to LAS Module](#)
- [Auto Import Module](#)

**Power\*Suite/Trivision PowerPoint Overview - [Download](#)**

[If you are looking for Drivers click here and visit our Drivers page](#)

**Manuals, Tutorials & Installation Procedures**

(Requires PDF) 

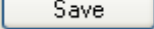
- [Complete User Manual](#)
- [Demos Installation Procedures](#)
- [HASP Key Upgrade](#)
- [Network Installation Procedures](#)
- [Office Viewer Installation Procedures](#)
- [Power\\*Curve Floating License Installation Procedures](#)
- [Power\\*Suite V11 Upgrade Instructions](#)
- [Site Code Instructions \(For CrypKey, Trial or rental licenses\)](#)
- [Trial License Installation](#)
- [Tutorials](#)
- [Older Version Manuals](#)

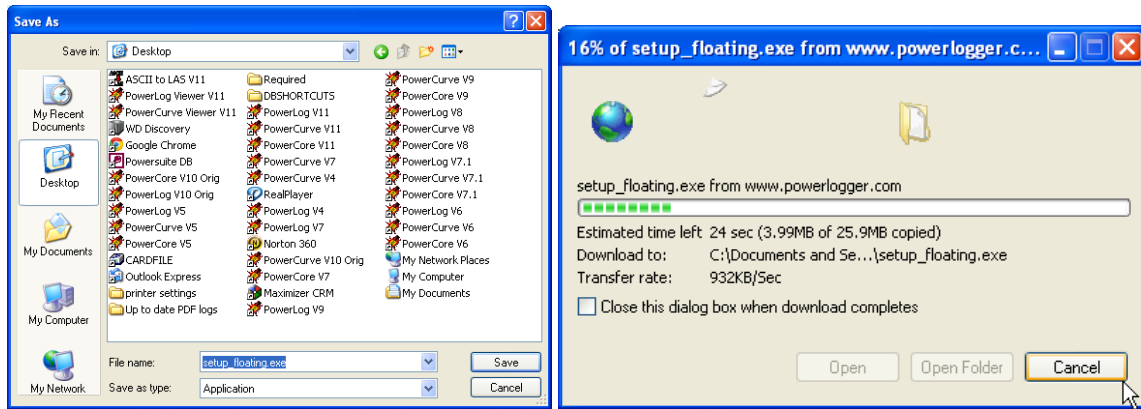
**Other Downloads**

http://www.powerlogger.com/Executables/setup\_floating.exe

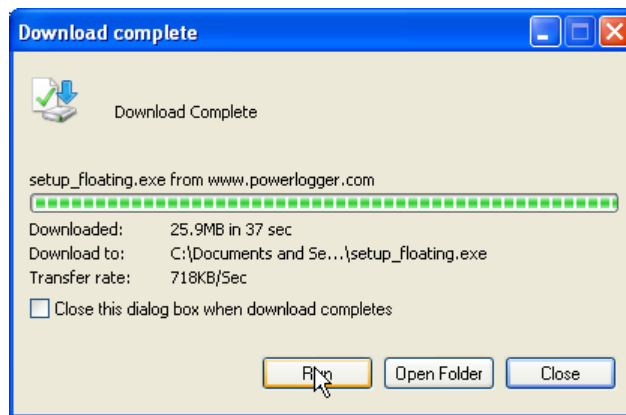
- 1.) Click on the **Power\*Curve Floating License** selection from our downloads page [www.powerlogger.com/downloads.htm](http://www.powerlogger.com/downloads.htm).
- 2.) . This will activate the download file.



- 3.) Click on the  button to activate the save as and save the file to a location that you can find. Maybe the desktop and you will then see a downloading progress window.




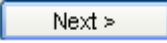
- 4.) This will activate another download window indicating download is complete. **Click on the button.**

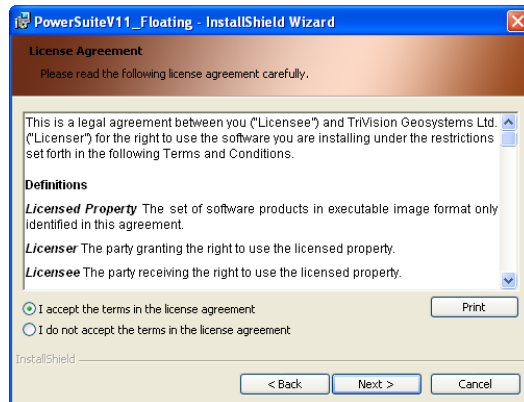


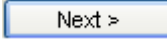
## Power\*Curve Floating License Installation Procedure


- 5.) This will activate the Install Shield setup followed by the Windows Install window and the **PowerSuiteV11 Floating Welcome Message Window** **Click on the** Next > **button.**

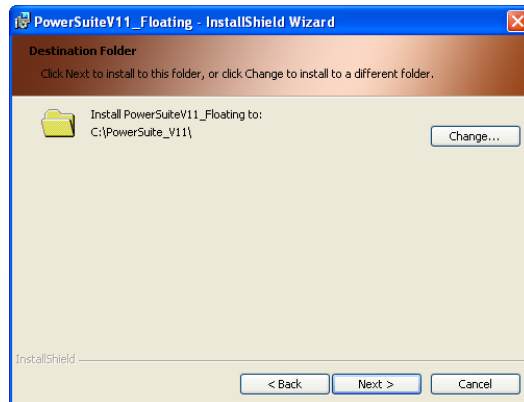


- 6.) This will activate the License Agreement window. Click on the  beside **I accept the terms in the license agreement**. Then click on the  button.

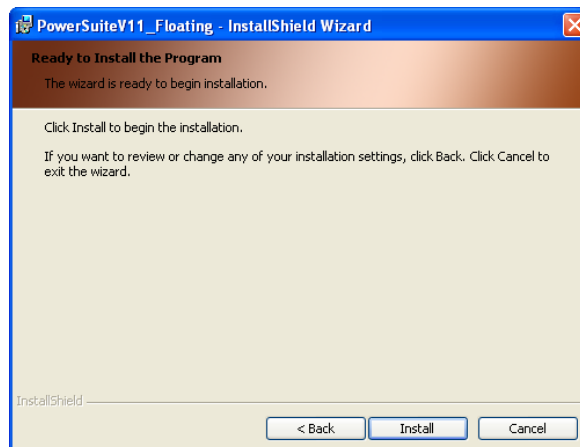


- 7.) This will activate the **Destination Folder** window with **C:\POWERSUITE\_V11** as the default location. If this is where the initial Install for PowerSuite Version 11 was Click on the  button.

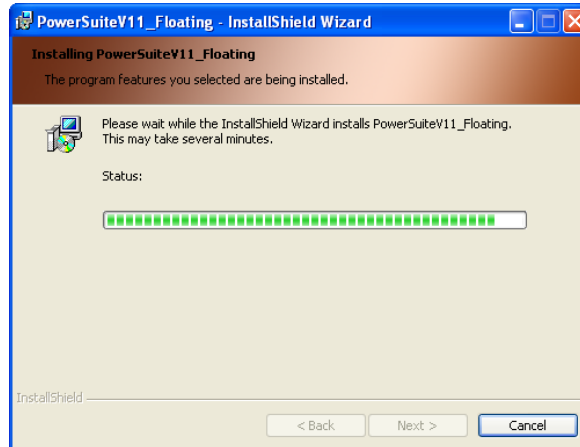
**If this is not the installed folder for PowerSuite Version 11 the user must change the destination folder by clicking on the  button and finding the correct installation folder**



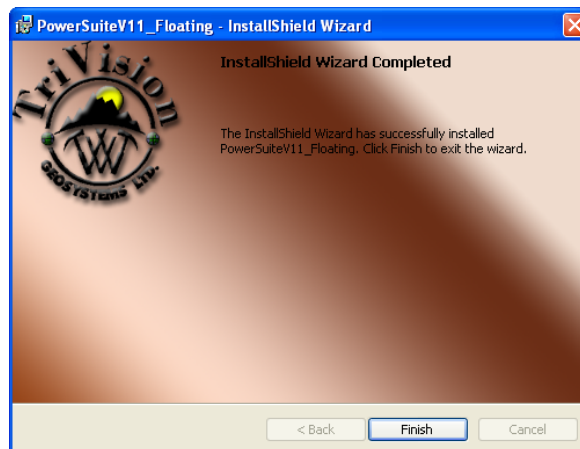
- 8.) This will activate the **Ready to Install** window. Click on the  button.



- 9.) Next the user will see the Installing **Power\*Suite V11 Floating window** copying files, writing to the registry, creating desktop icons, creating start menu folder etc. An example of this window can be seen below.



- 20.) Once the Update Installation is complete the **Install Wizard Completed** window shown below will be activated. Click on the **Finish** button for the Floating License install.

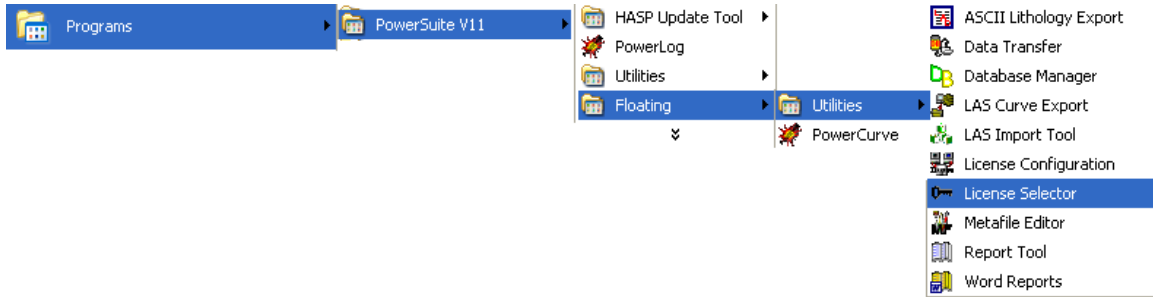



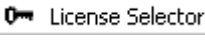
You will now have successfully installed the Power\*Suite Floating Folder to the PowerSuite V11 folder in the Start menu and the floating folder inside the original install.

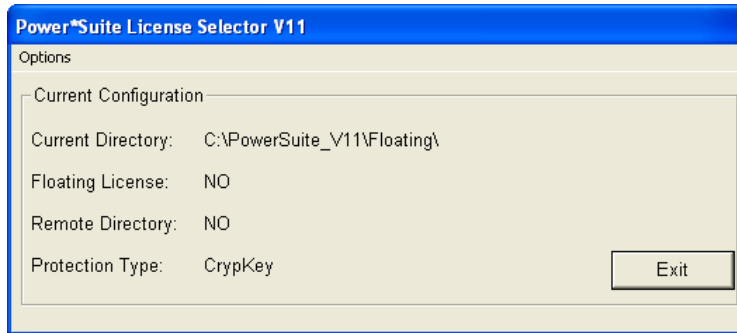
You may want to delete the unused Icons from your desktop. The ones you want to keep are the Power\*Log and the Power\*Curve Floating Icons.

**HASP Key Activation for the Floating License Users**

You will have to follow these procedures if you have a key just for the Power\*Curve as in this case we do default it to the Crypkey setting.



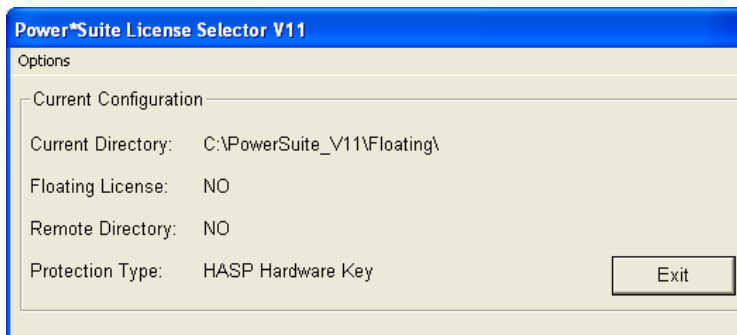
1.) To activate the Power\*Suite License Selector click on the  **start** button on the toolbar and click on **All Programs** and select **POWER\*SUITE\_V11**. Select **Floating**, then **Utilities-Floating** and click on the  **License Selector** selection as shown above. This will activate the License Selector window.




2.) Click on the **Options** selection to view the pull down menu.



3.) **Select HASP**. The Protection type should read HASP Hardware Key as viewed in the Power\*Suite License Selector window shown below.



4.) Click on the  **Exit** button

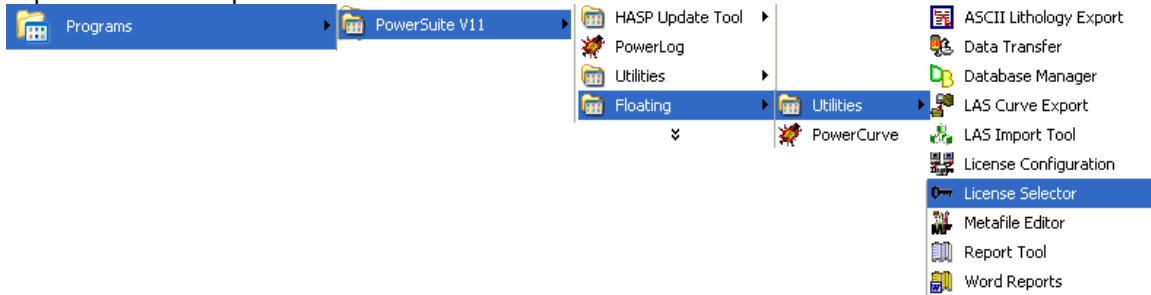
You are now ready to run either Power\*Log, Power\*Curve or Power\*Core depending on your Hasp Key and its authorization.



## Crypkey (Software) License Activation [Remote]

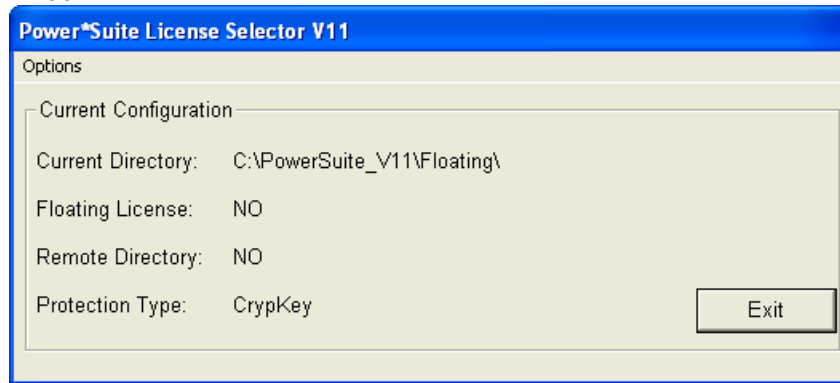
The Crypkey Authorization (Remote) licensing has to be done by Trivision Geosystems Ltd. on a Network Server. To activate a trial or permanent Remote Crypkey license please call our office @ (403) 777-9454. The user should refer to the License Configuration section in the manual to generate a site code. Each machine should be loaded the setup, latest patch / update as well as the crystal reports. Once this is done each machine on the network can be configured to look at eh Network License file as setup previously.

Each individual Computer must be done this way. Refer to how to Install PowerSuite Version 11 instructions for installing the application.

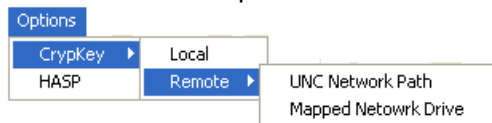
This procedure sets up the License.ini file that sits in the Powersuite\_V11 folder. This file can be copied and can be pushed out to all the network users.




1. To activate the Power\*Suite License Selector click on the  **start** button on the taskbar and click on **All Programs** and select **POWER\*SUITE\_V11**. Then, select **Floating** select **Utilities** and click on the  **License Selector** selection. This will activate the License Selector window.

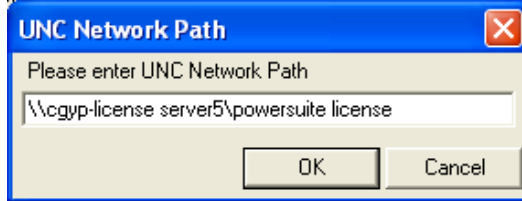


2. Click on the **Options** selection to view the pull down menu.

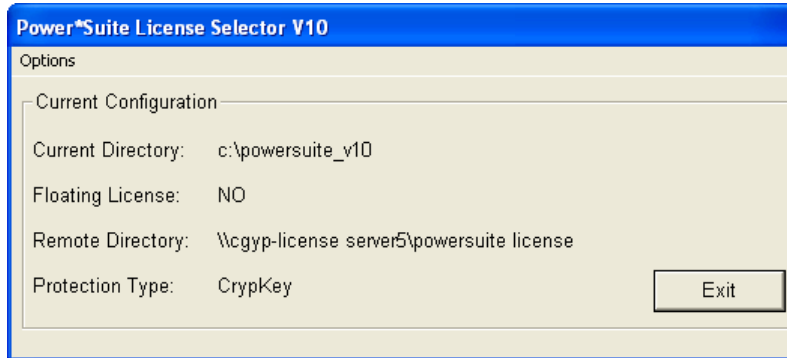



3. Select **Crypkey** to activate a pop-out menu.
4. Select **Remote** to activate another pop-out menu.
5. Select either the **UNC Network Path** or the **Mapped Network Drive** selection to direct the Power\*Suite applications to the location of the licensing files. The Protection type should read Crypkey as viewed in the Power\*Suite License Selector window as well as the path to the remote directory where the license files are located as shown above. Refer to step 6 or 7 depending on your application.

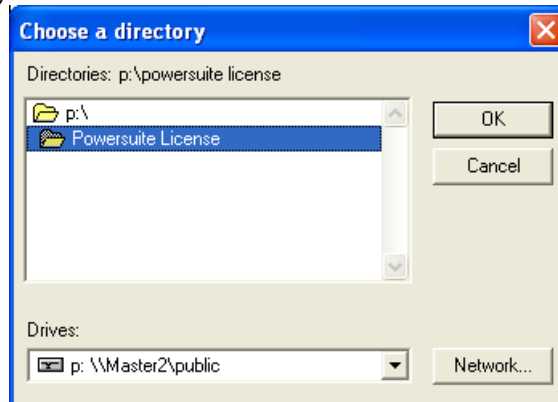
6. **UNC Network Path** will activate a window in which the user should type in the path to the Crypkey License files as shown below and then **click** on the  **button**.



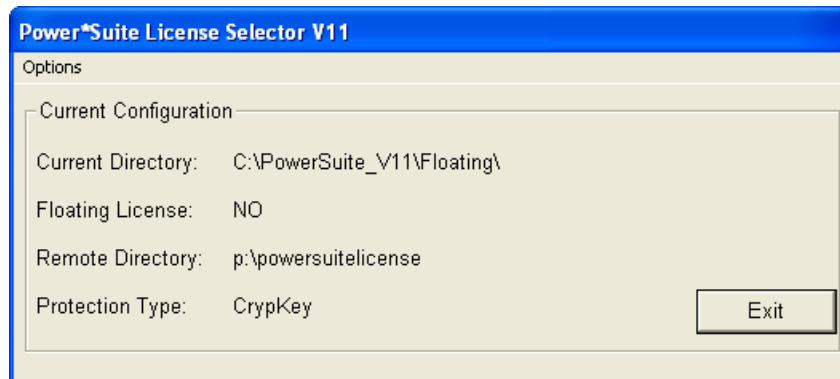
The result of step 6 should look like the picture shown on the next page.



7. **Mapped Network Drive** will open a window in which the user will select the drive and directory in which the Crypkey License files reside and then **click** on the  **button**.



The result of step 7 should look like the picture shown below.



8. **Click** on the  **button**