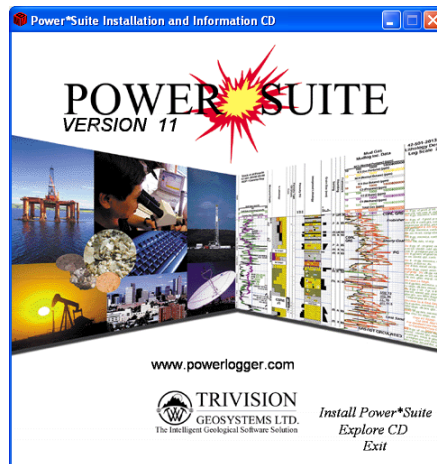


Power*Suite Update (Patch) Installation Procedure

- 1.) Insert Power*Suite CD V11 into the CD Rom Drive of your Computer.



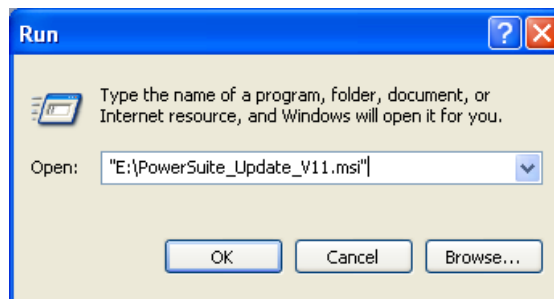
- 2.) If the Autorun works the CD ROM should be activated automatically and you will see the Window above. **Select Install Power*Suite. If the CD does not Autorun move ahead to Step 4.**



- 3.) **Select Install Update only** and proceed to step 6.

Note: The update from the cd might not be the latest one. To get the latest update, please refer to our website www.powerlogger.com/Executables/update.msi.

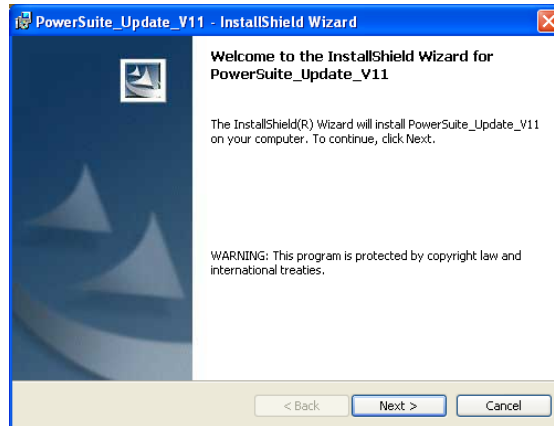
- 4.) **If the AutoRun is not running Click** on the  **start** button on your task bar and then **click** on the **Run selection**. This will activate the Run window.



- 5.) Click on the **Browse...** button and select the **PowerSuite_Update_V11.msi** from the Updates folder on your CD Rom. Click on the **OK** button in the Run window.

Note. MSI files do not show in the Browse window. Remember to **change the file of type drop arrow** from Programs to All Files

- 6.) This will activate the Install Shield setup followed by the Windows Install window and then the **Power*Suite Update Welcome Message Window**. Click on the **Next >** button



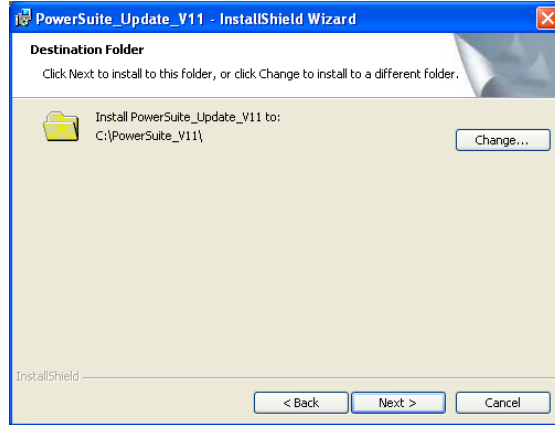
- 7.) This will activate the **License Agreement** window. Click on the **Next >** button.



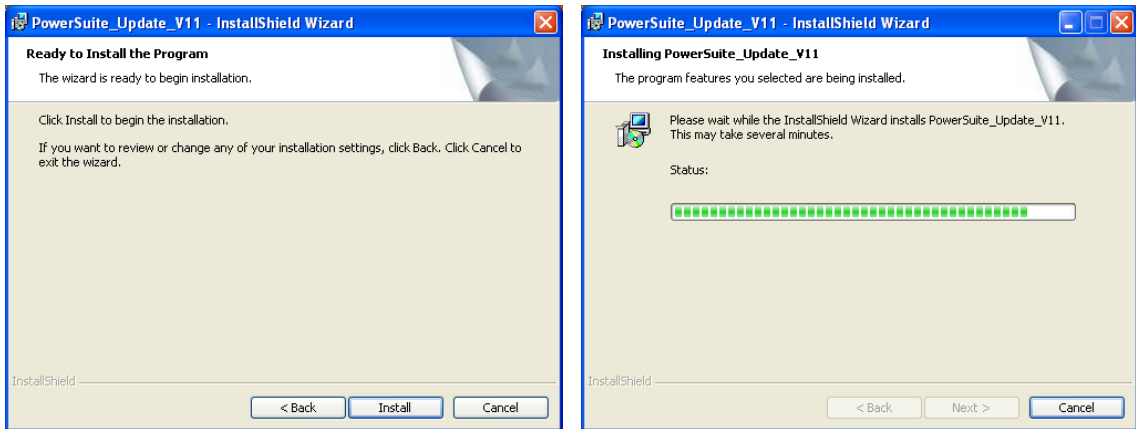
- 8.) This will activate the **Destination Folder** window with **C:\POWERSUITE_V11** as the default location. Click on the **Next >** button.

The User has the ability to change the destination folder if required by clicking on the **Change...** button. This all depends on where the original Power*Suite was installed.

Change...

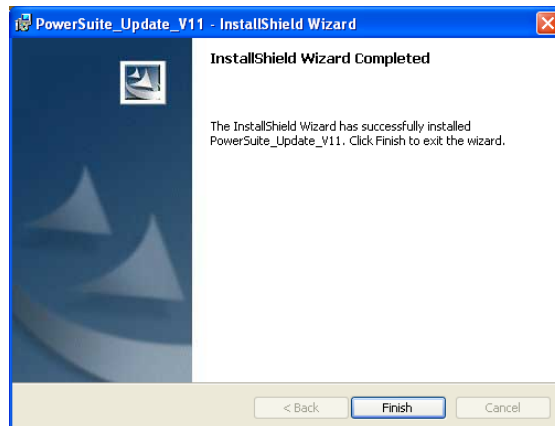


9.) This will activate the Custom Setup window with **PowerSuite** as the **default**. For most installs **Click** on the **Next >** button.



10.) This will activate the **Ready to Install the Program** window. **Click** on the **Install** button. Next the user will see the **Installing Power*Suite Update** window copying files, removing backup files etc. An example of this window can be seen below

11.) Once the Update Installation is complete the **Install Wizard Completed** window shown below will be activated. **Click** on the **Finish** buttons for the Update.



You will now have successfully installed the Power*Suite Update.