



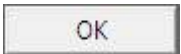
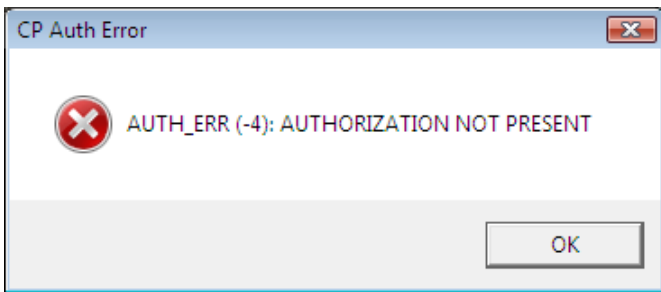
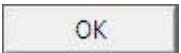


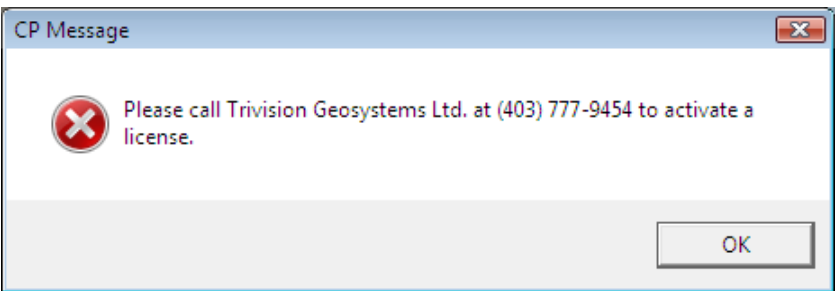
**Trial License Activation**

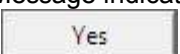
- 1.) Double click on the Power\*Log / Curve or Core Desktop Icons  .
- 2.) Or In Windows 7 or less click on the  button on the taskbar and Click on All Programs and Click on PowerSuite\_2015 and then select the Power\*Log / Curve or Core  Power Log Selections. In Windows 8 you can press the Windows key on the keypad and type PowerLog into the search bar and then select the  to activate the application.

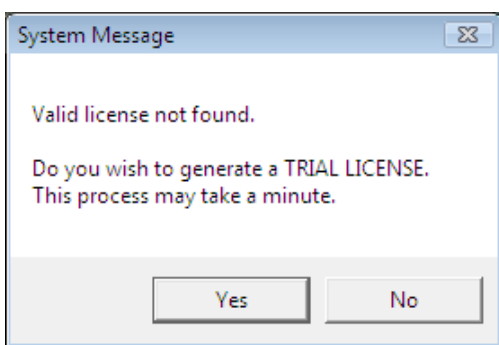
- 3.) This will activate a CP Auth Error message. Click on the  button.

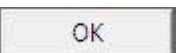


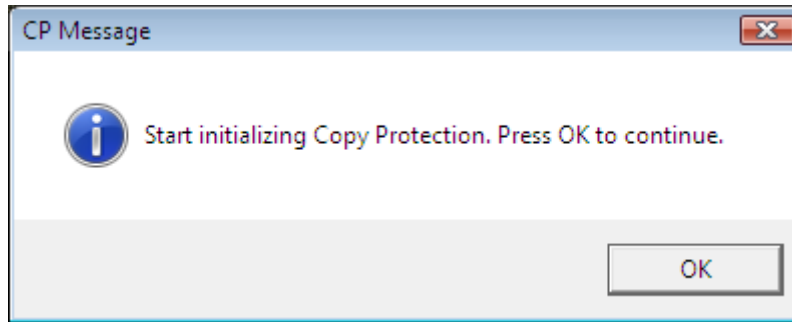
- 4.) This will activate a CP Message shown below. Note the phone number for later use. The trial license activated will be for 7 days. If you need further time to evaluate, you will have to call the phone number for more time. Click on the  button.




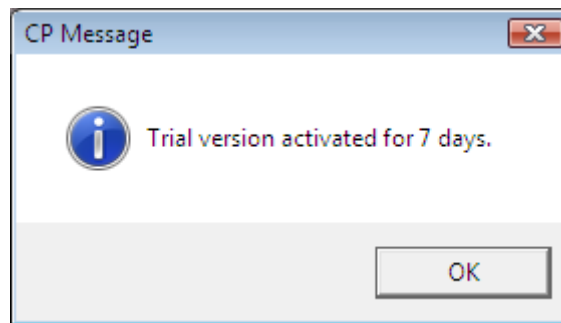
- 5.) This will activate a System Message indicating there was no valid license and do you want to generate a trial license. Click on the  button.



- 6.) This will activate a CP Message shown below. Click on the  button.



7.) This will activate another CP Message shown below. **Click** on the  **button**



8.) This will activate a final System Message. **Click** on the  **button**. Repeat Step 1 to activate the program.

