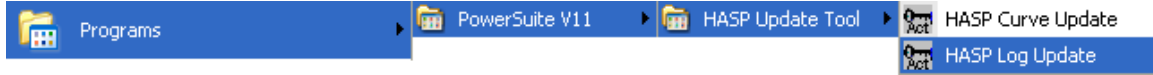


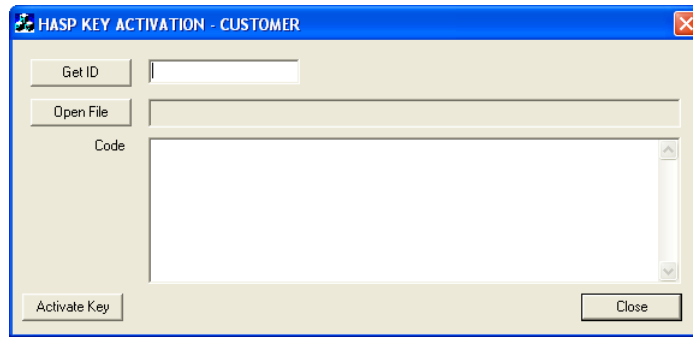
**HASP Key Log Upgrade Procedures**

The following are the instructions on how to update your HASP key, either a hardware key or USB key.

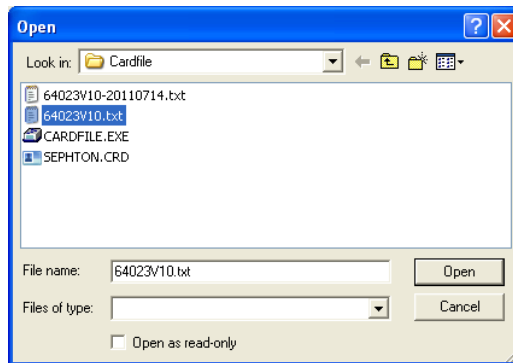


We have adapted our authorization from Version 3.0 onward with a Hasp Hardware Key. Once a Power\*Suite program is loaded on a machine the user has simply to attach a Hasp Hardware key to the Parallel Port on their computer. The program is initially installed and protected by a software program. We have utilized a Software Authorization Program called Crypkey.

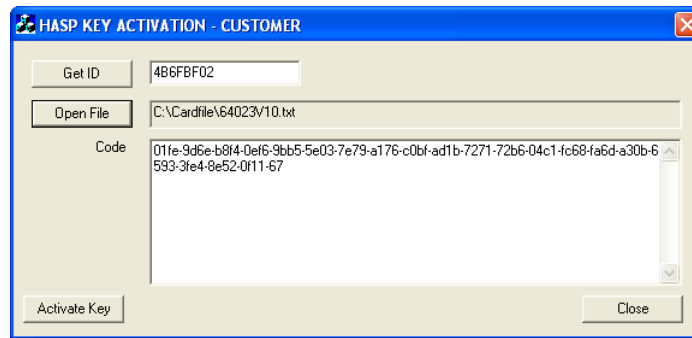
1. Click on the **start** button on the toolbar and click on **All Programs** and select **POWER\*SUITE\_V11**. Then select the **Hasp Update Tool** selection, and then click on the **HASP Log Update** selection. This will activate the Hasp Key Activation window.




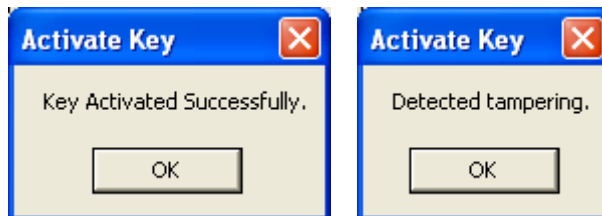
2. Click on the **Open File** button. This will activate the open file window and locate the codes that were sent to you via email or other means. If you do not have email then you will have to fill in this Code field by hand.



3. Click on the **Open** button and the codes will then be viewed in the activation window as shown below.




4. Click on the  button. If done successful you will receive a system message as shown below. Or if unsuccessful you will receive a message such as tampering as shown below.

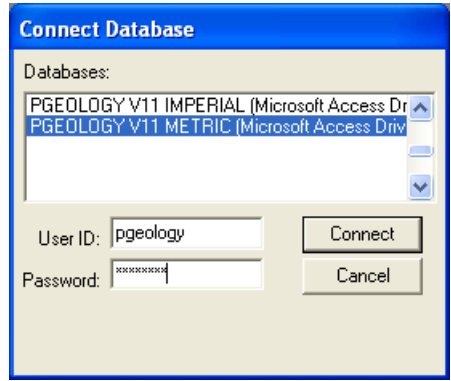



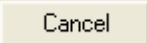
5. Click on the  button to close the window.

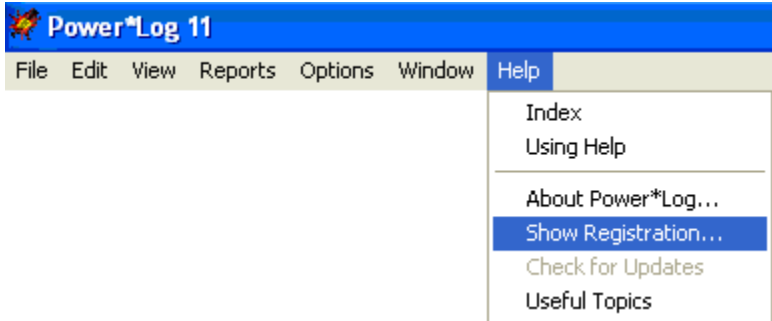
**Verify your USB Activation**



- 1.) **Double click** on the PowerLog V11 **Icon**. Acknowledge the Security Information window by **clicking** on the  **button**. This will initiate the program and activate a **Connect Database** window.



- 2.) Highlight the **PGEOLGY V11 Metric (Microsoft Access Driver)\*.mdb]** database and enter your **User ID** and **Password** in their respective fields (your default User ID and Passwords are both "pgeology").
- 3.) **Click** on the  **button** to complete the connection. The **New Log** window will be shown.
- 4.) **Click** on the  **button**.
- 5.) Select **Show Registration**, under the **Help** menu selection in Power\*Core as shown below.



This will activate the Security Information window and show you the access flags on the USB key you just activated. The window is shown below. Yours should be the same as this one shown only different license #. If they are the same repeat these activation steps for all the USB hasp keys you were sent.

