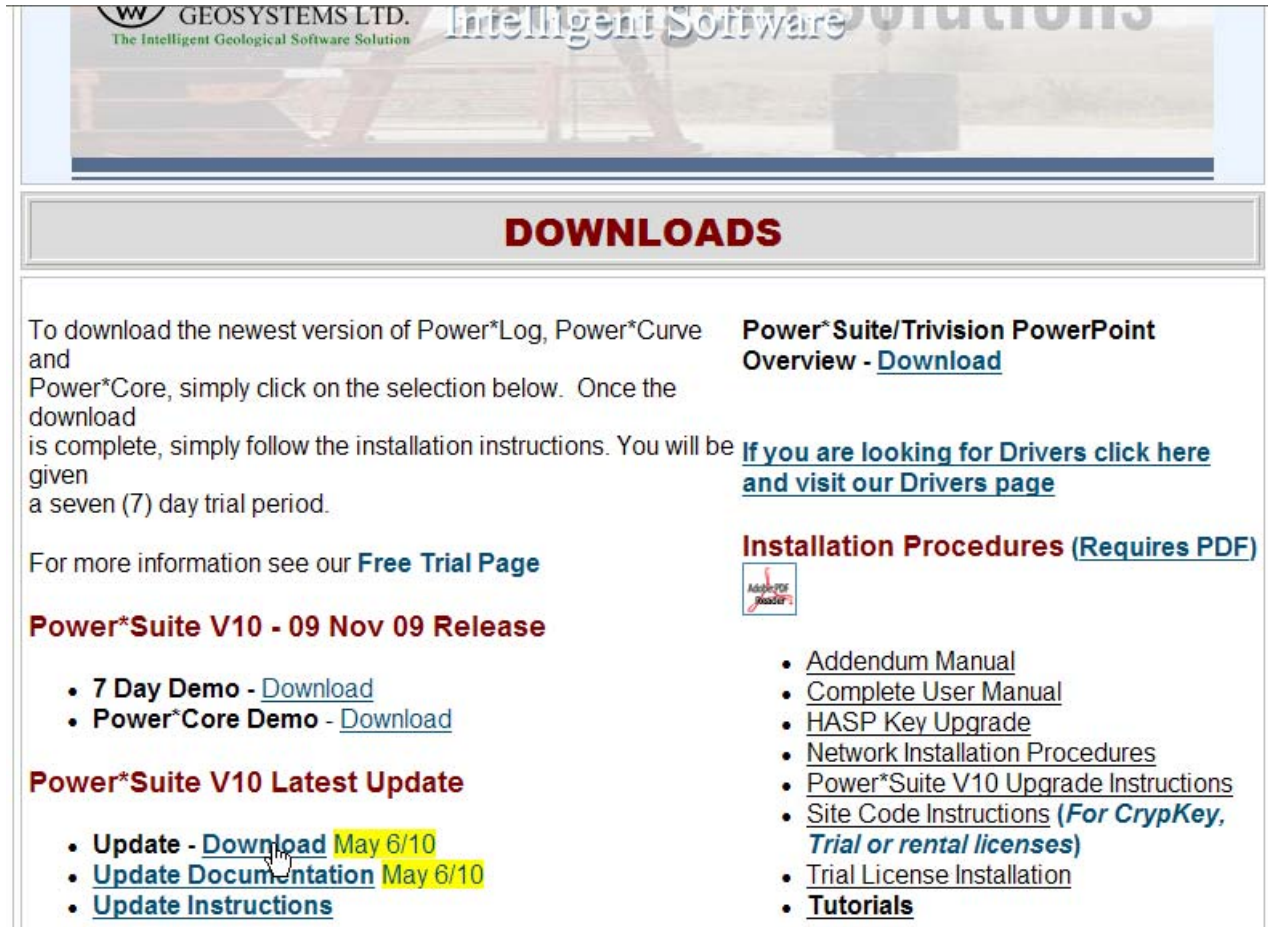


## Power\*Suite Update (Patch) Installation Procedure



To download the newest version of Power\*Log, Power\*Curve and Power\*Core, simply click on the selection below. Once the download is complete, simply follow the installation instructions. You will be given a seven (7) day trial period.

For more information see our [Free Trial Page](#)

**Power\*Suite V10 - 09 Nov 09 Release**

- [7 Day Demo - Download](#)
- [Power\\*Core Demo - Download](#)

**Power\*Suite V10 Latest Update**

- [Update - Download](#) May 6/10
- [Update Documentation](#) May 6/10
- [Update Instructions](#)

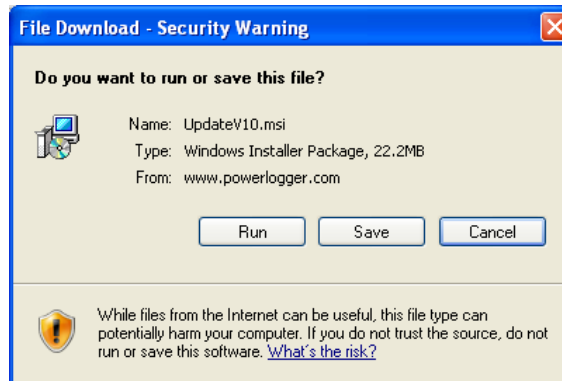
**Power\*Suite/Trivision PowerPoint Overview - [Download](#)**

**If you are looking for Drivers click here and visit our Drivers page**

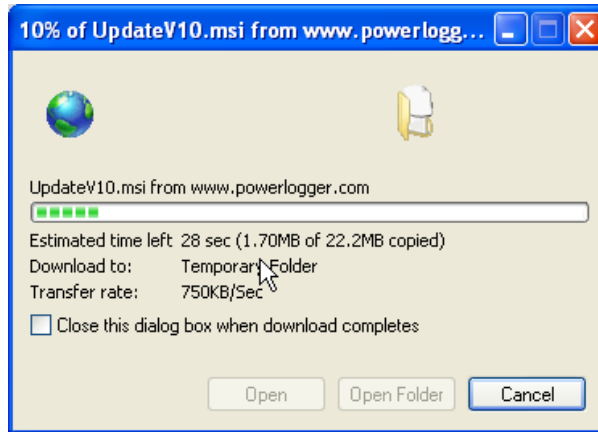
**Installation Procedures ([Requires PDF](#))**

- [Addendum Manual](#)
- [Complete User Manual](#)
- [HASP Key Upgrade](#)
- [Network Installation Procedures](#)
- [Power\\*Suite V10 Upgrade Instructions](#)
- [Site Code Instructions \(For CrypKey, Trial or rental licenses\)](#)
- [Trial License Installation](#)
- [Tutorials](#)

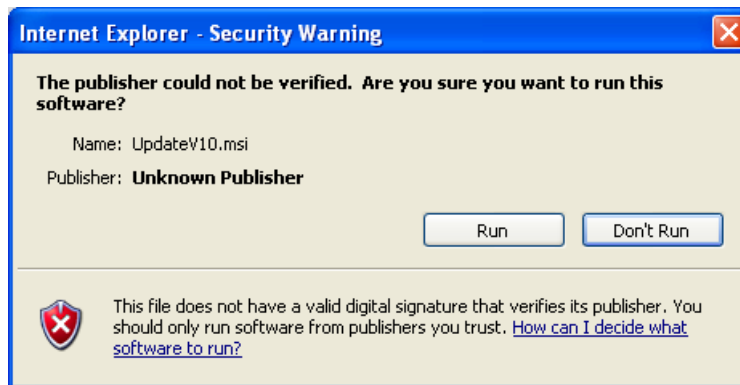
- 1.) Click on the Update - **Download** (Date) as indicated above from our downloads page [www.powerlogger.com/downloads.htm](http://www.powerlogger.com/downloads.htm).. This will activate the file download.



- 2.) Click on the  button. This will activate the download file in progress window.

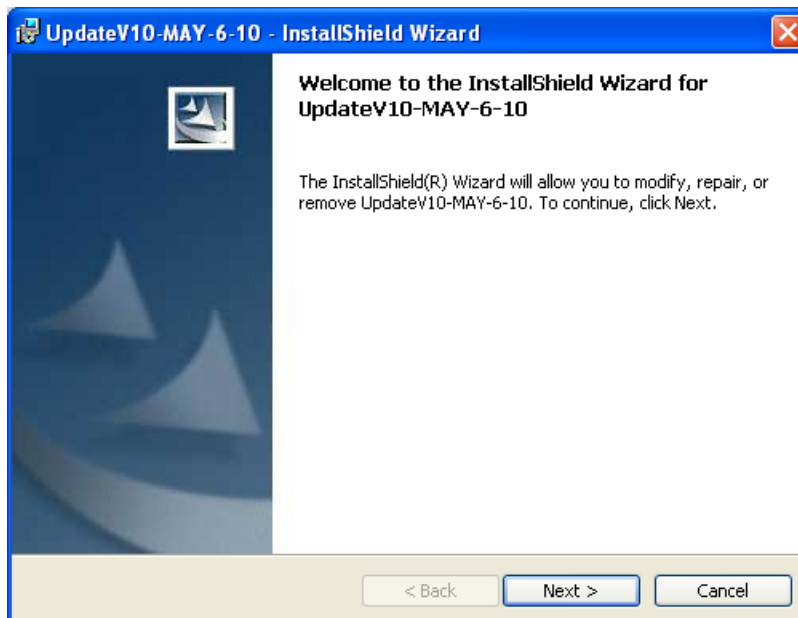



3.) When the file download is complete this will activate a Security Warning message.

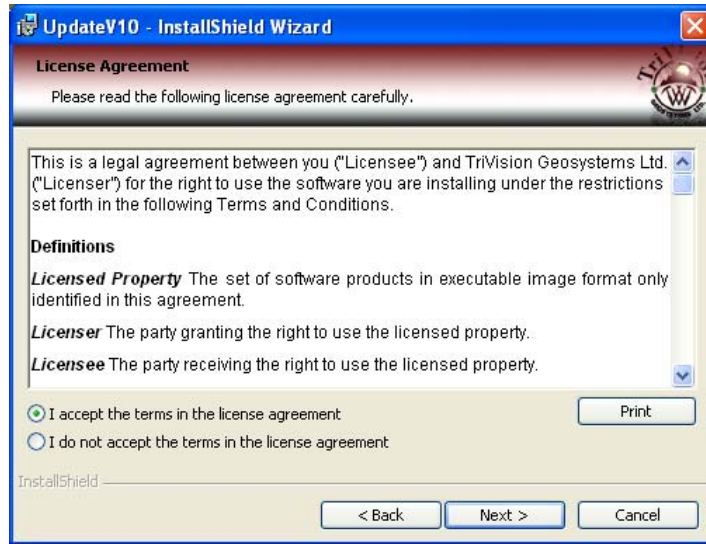


4.) Click on the  button.

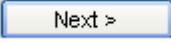
6.) This will activate the Install Shield setup followed by the Windows Install window and then the **Power\*Suite Update Welcome Message Window**. Click on the  button




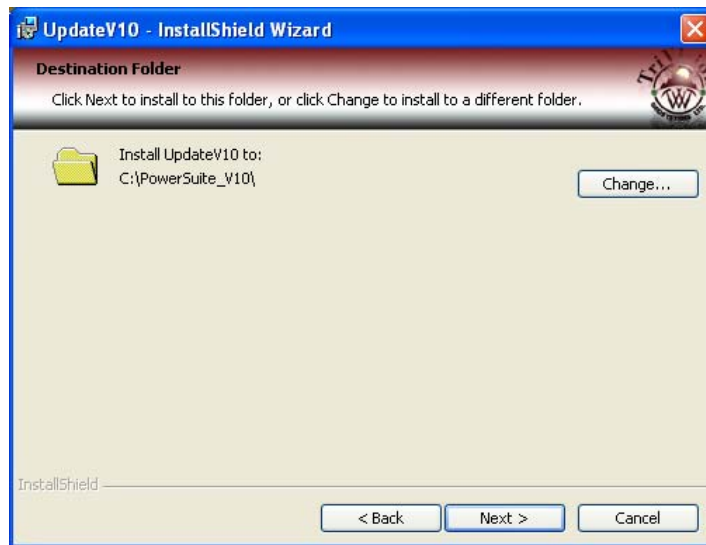
7.) This will activate the **License Agreement** window. Click on the  button.

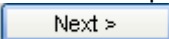
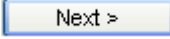


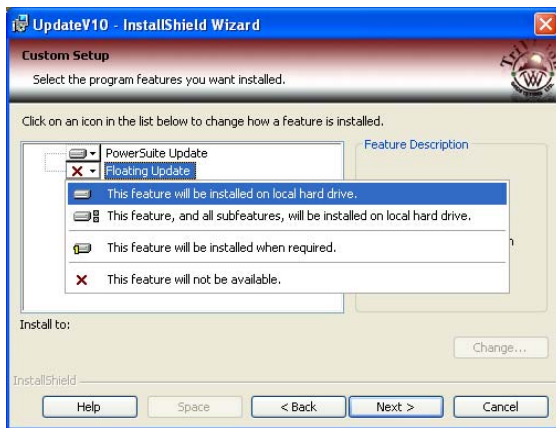
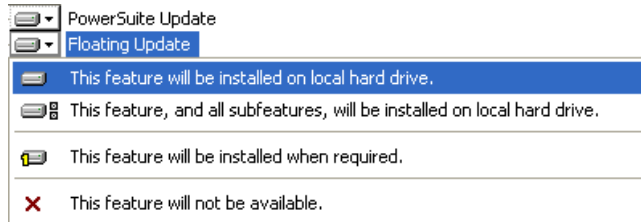
8.) This will activate the **Destination Folder** window with **C:\POWERSUITE\_V10** as the default location.

Click on the  button.

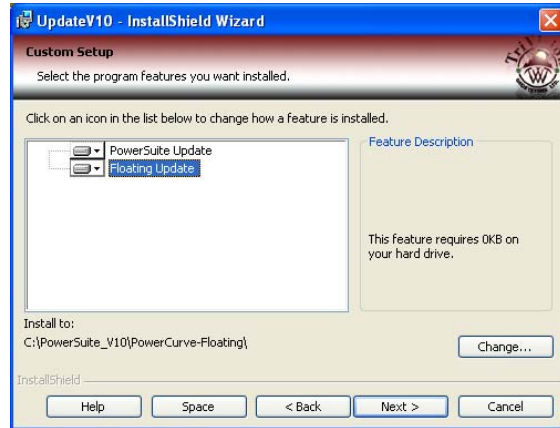
The User has the ability to change the destination folder if required by clicking on the  button. This all depends on where the original Power\*Suite was installed.




- 9.) This will activate the Custom Setup window with **PowerSuite** as the **default**. For most installs **Click** on the  button.
- 10.) **If you have the Floating license installed then you must Click** on the **down arrow** beside the **Floating Update** and **select** “This feature will be installed on the local hard drive” as shown below. **Click** on the  button

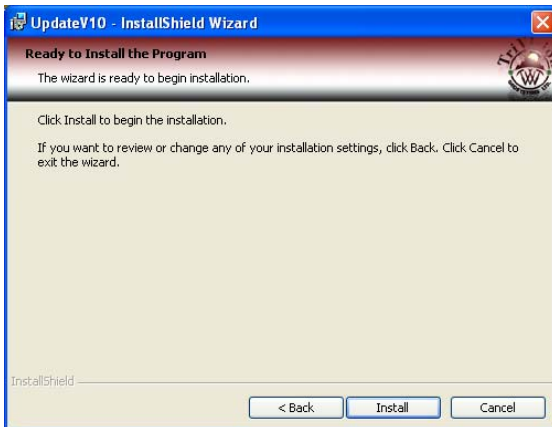



Before

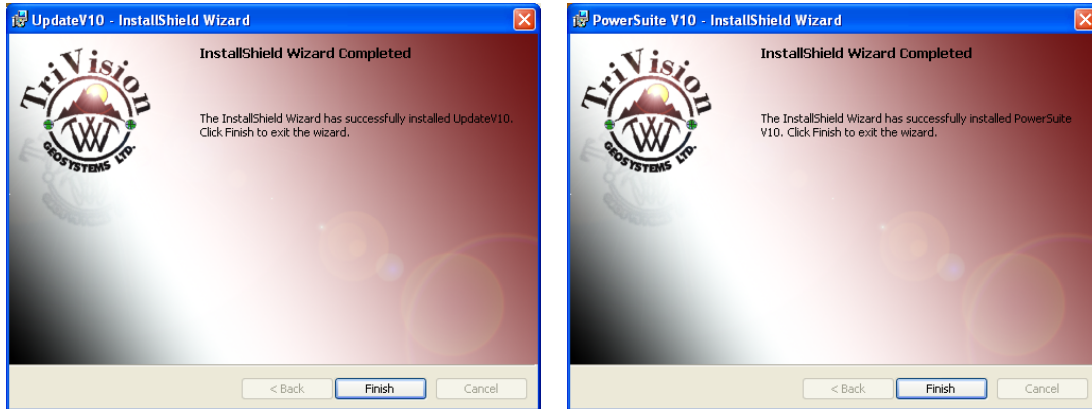


After

- 11.) This will activate the **Ready to Install the Program** window. **Click** on the  button. Next the user will see the **Installing Power\*Suite Update window** copying files, removing backup files etc. An example of this window can be seen below



12.) Once the Update Installation is complete the **Install Wizard Completed** window shown below will be activated. **Click on the  buttons twice** for the Update and the Main install..



You will now have successfully installed the Power\*Suite Update.