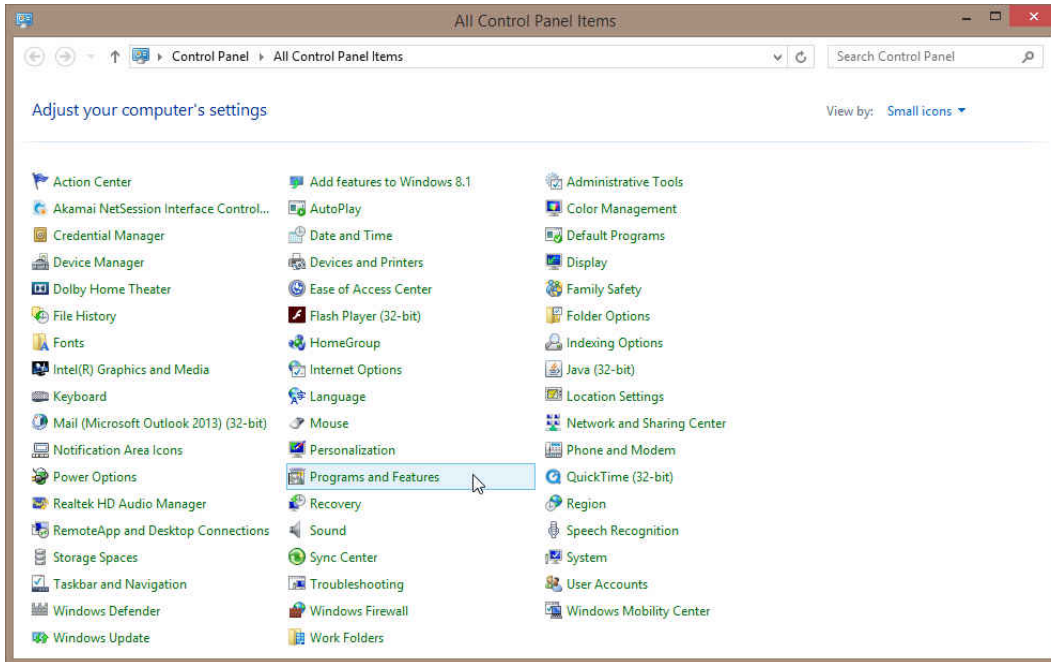


Power*Curve Floating License Installation Procedure

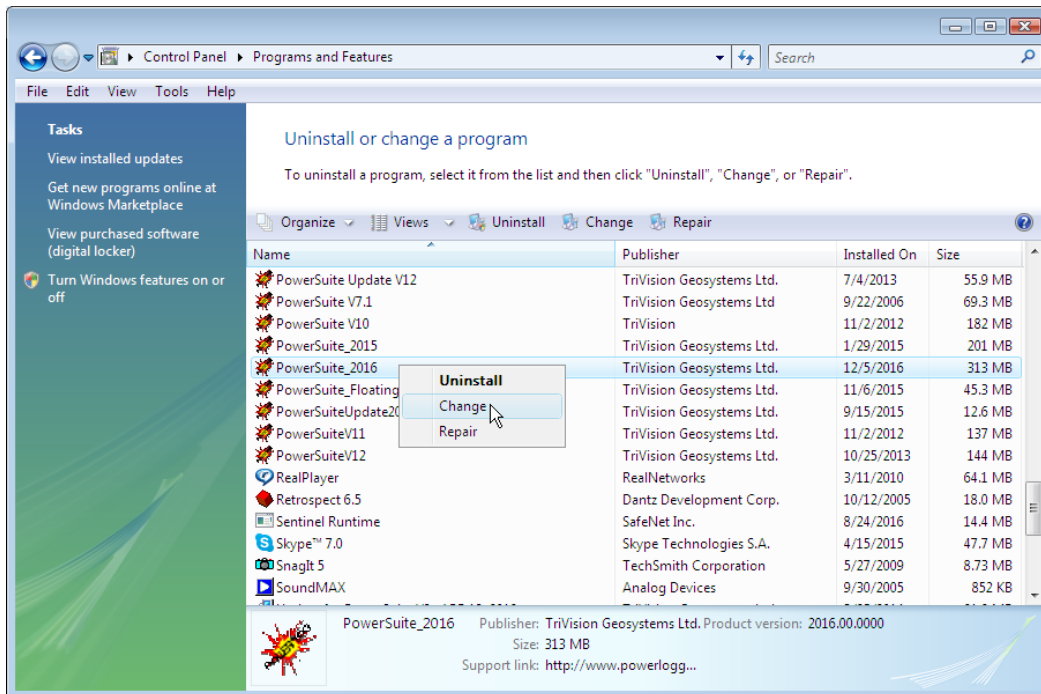
Rental or Crypkey Authorization

Power*Suite 2016 already installed

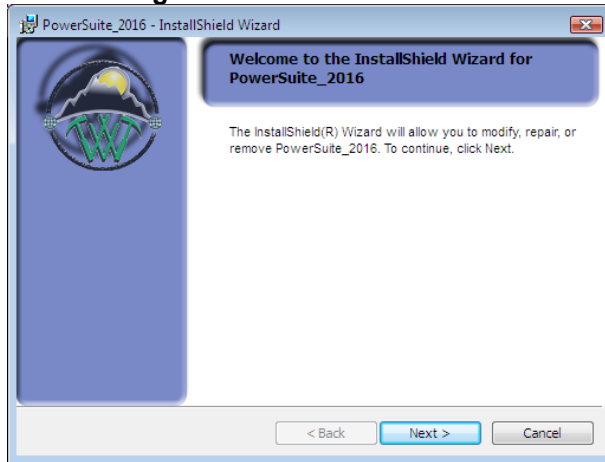
- 1.) The user must activate the **Control Panel**. It may be in the **Windows Start** menu or you may have to **search for the Control Panel** shown below.




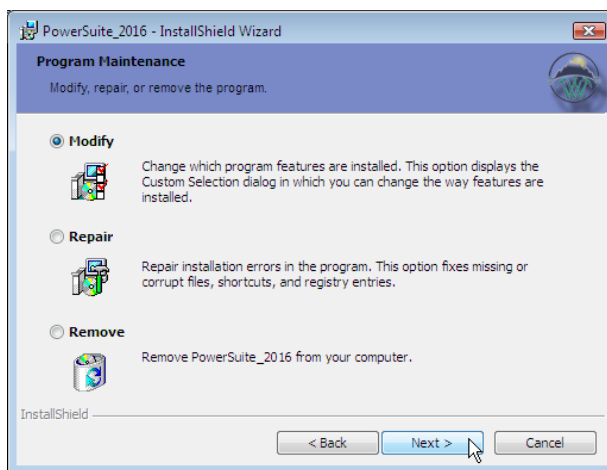
- 2.) **Click on the Programs and Feature Icon**. This will activate all the programs that have been installed on your computer.



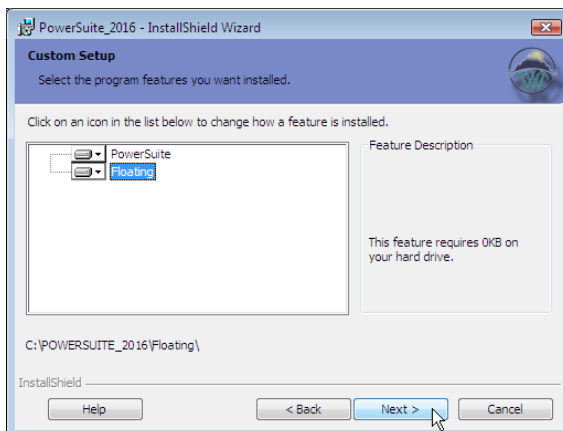
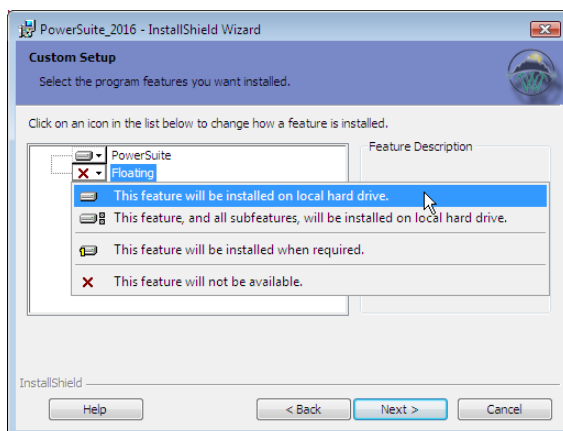
- 3.) This will activate the Install Shield setup followed by the Windows Install window and the **Power*Suite Welcome Message Window**. Click on the **Next >** button.



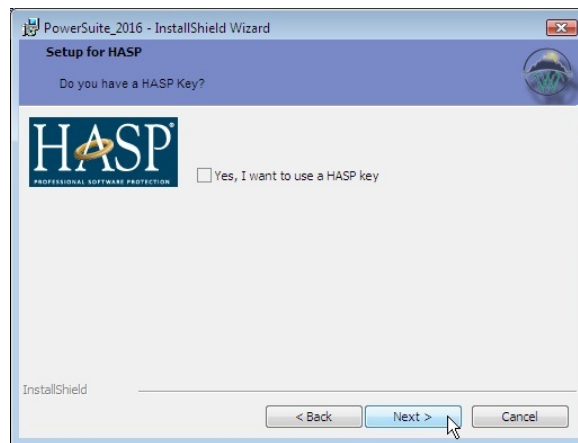
- 4.) This will activate the Program Maintenance window. Click on the  beside **Modify**. Then click on the **Next >** button. This will activate the Custom Setup window.



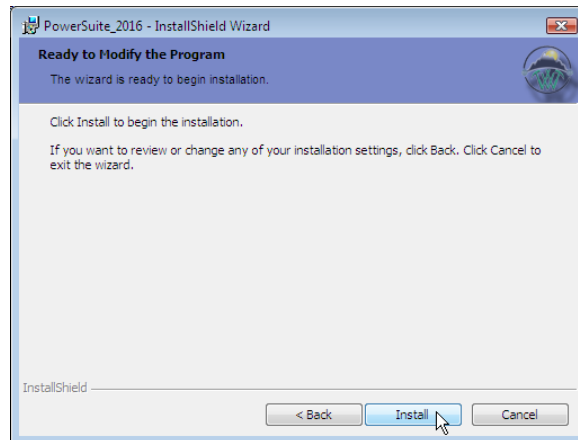
- 5.) Click on the **Floating drop arrow** and select **This feature will be installed on your local hard drive**. Click on **Next >** button.



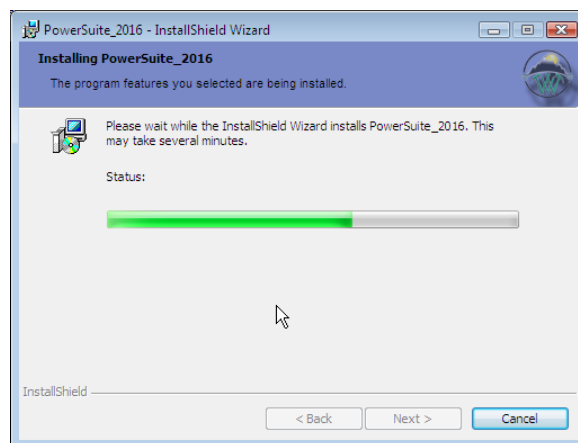
- 6) This will activate the Setup for Hasp Window. Because you will be renting you will more than likely not have a Hasp USB key then you will **Uncheck** the Yes, I want to use a HASP key and then **Click** on the **Next >** button

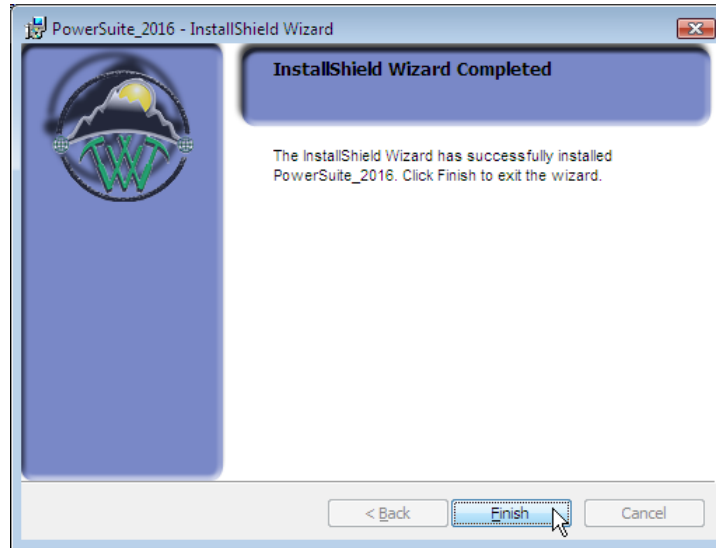



- 6.) This will activate the **Ready to Install** window. **Click** on the **Install** button.



- 7.) Next the user will see the Installing **Power*Suite_2016** copying files, writing to the registry, creating desktop icons, creating start menu folder etc. An example of this window can be seen below.






8.) Once the Update Installation is complete the **Install Wizard Completed** window shown below will be activated. **Click** on the  **button** for the Power*Suite 2016 Floating portion of this install.


You will now have successfully installed the Power*Suite Floating Folder to the Power*Suite_2016 folder in the Start menu and the floating folder inside the original install.

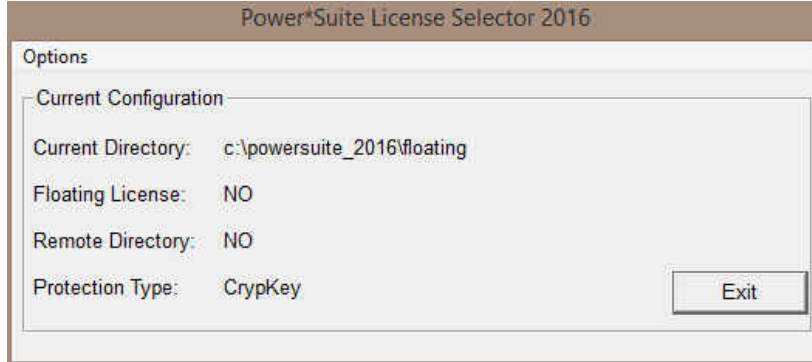
You may want to delete the unused Icons from your desktop. The ones you want to keep are the Power*Log and the Power*Curve Floating Icons.

HASP Key Activation for the Floating License Users

You will have to follow these procedures if you have a key just for the Power*Curve as in this case we do default it to the Crypkey setting.

- 1.) In **Windows 7 or less** to activate the Power*Suite Floating License Selector **click** on the  button on the toolbar and **click** on **All Programs** and **select**

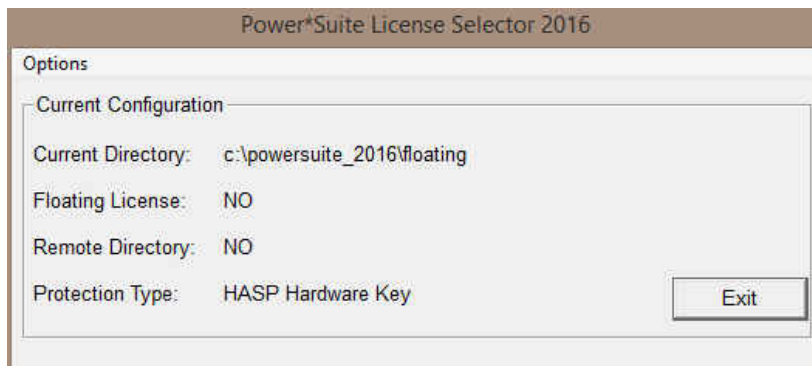
POWER*SUITE_2016. **Select Floating**, then **Utilities** and **click** on the  License Selector selection. In **Window 8** **click** on the **Windows key** on your **keypad**, type **License Selector** in your search menu and the **last License Selector** from your list. You probably have 2 choice. This will activate the License Selector window.




- 2.) **Click** on the **Options** selection to view the pull down menu.



- 3.) **Select HASP**. The Protection type should read HASP Hardware Key as viewed in the Power*Suite License Selector window shown below.





- 4.) **Click** on the  button

You are now ready to run Power*Curve Floating License from a HASP depending on your Hasp Key and its authorization.

Crypkey (Software) License Activation

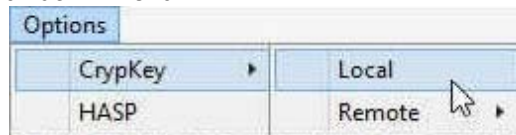
You will have to follow these procedures if you have a key just for the Power*Curve as in this case we do default it to the Crypkey setting.

- 1.) In **Windows 7 or less** to activate the Power*Suite Floating License Selector **click** on the  **start** button on the toolbar and **click** on **All Programs** and **select**

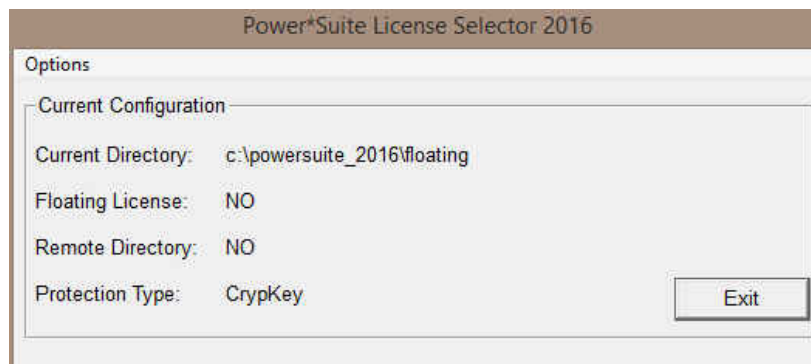
POWER*SUITE_2016. **Select Floating**, then **Utilities** and **click** on the  **License Selector** selection. In **Window 8** **click** on the **Windows key** on your **keypad**, type **License Selector** in your search menu and the **last License Selector** from your list. You probably have 2 choice. This will activate the License Selector window.




- 2.) If your License Selector has a protection type of HASP Hardware Key **Click** on the **Options** selection to view the pull down menu.



- 3.) **Select Crypkey Local**. The Protection type should read HASP Hardware Key as viewed in the Power*Suite License Selector window shown below.


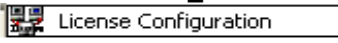


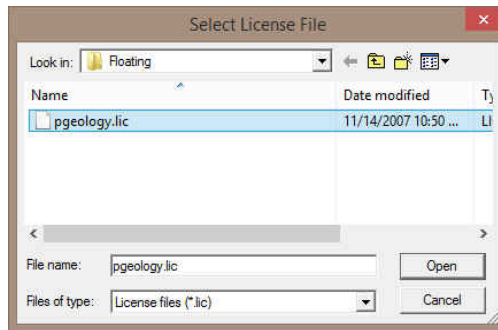
- 4.) **Click** on the  **Exit** button



You are now ready to run Power*Curve Floating License from a from a crypkey license depending if you have authorization. If not you will want to call TriVision Geosystems at +1 403-777-9454 or email us at info@powerlogger.com

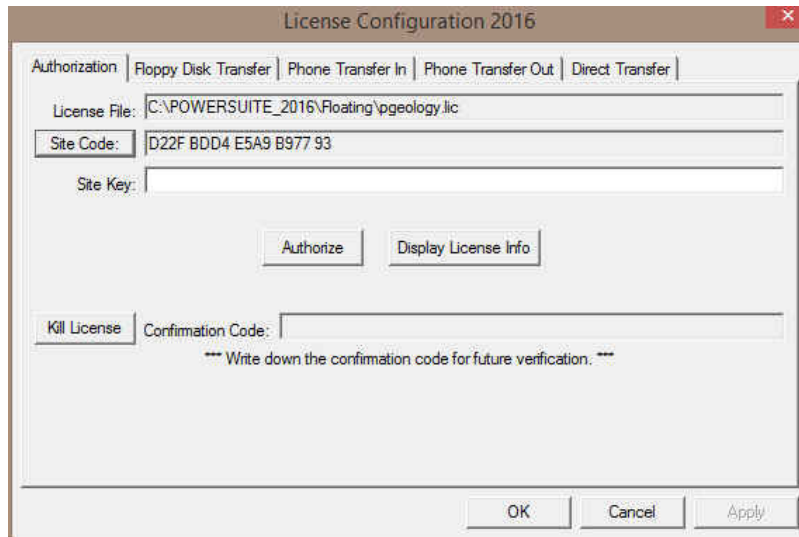
Crypkey (Software) License Activation [Rental]

The Crypkey Authorization (Rental) licensing has to be done by Trivision Geosystems Ltd. This would be applicable if you have Power*Log and would like to rent Power*Curve for a period of time. To activate Rental Crypkey license please call our office @ (403) 777-9454. The user should refer to the License Configuration section in the manual to generate a site code. Each machine should be loaded the setup, latest patch / update as well as the crystal reports as installed earlier.

1. In **Windows 7 or less** to activate the Power*Suite Floating License Selector **click** on the  **start** button on the toolbar and **click** on **All Programs** and **select POWER*SUITE_2016**. **Select Floating**, then **Utilities** and **click** on the  selection. In **Window 8** **click** on the **Windows key** on your **keypad**, type **License Configuration** in your search menu and the **last License configuration** from your list. You probably have 2 choice. This will activate the Select License file window.



2. **Click** on the **pgeology.lic** file name in the **PowerSuite_2016\Floating** folder and then **click** on the  **Open** button in the **Select License File** window to proceed.
3. Acknowledge both the subsequent error messages and the contact message by **clicking** on the  **OK** buttons. This will now activate the **License Configuration 2016** window which will default to the Authorization Tab.



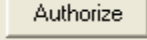
4. **Click** on the  **Site Code:** button within the window.

5. This will activate a System message stating “*Site Code generation may take a few minutes.*”

Do you wish to continue?” Click on the  button.

6. The *Site Code* will be generated and can then be displayed in the *Site Code* field. This number can be written down, copied and pasted and sent to Trivision via phone at (403) 777-9454, or email at info@powerlogger.com.
7. Trivision will generate a *Site Key*. This number will have coded within it the number of days the program will be activated for and which modules you wish to purchase or evaluate. **Type** or copy and paste the **site key number** within the **Site Key Field**.

Note: Do **NOT CLOSE** the License Configuration window as the site code may change and the site key you get back will no longer be good.

8. Click on the  button. If successful you will get a message indicating so.

You should be good to go with a crypkey authorization sitting in your floating folder for the Power*Curve Floating application.