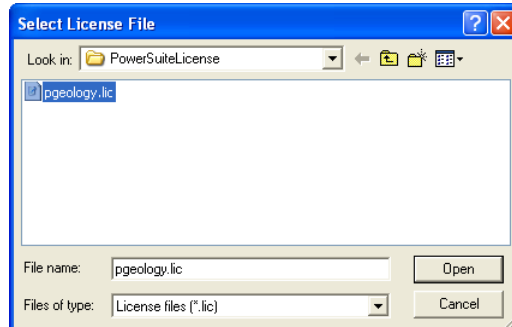


## Network Crypkey Power\*Suite License Authorization

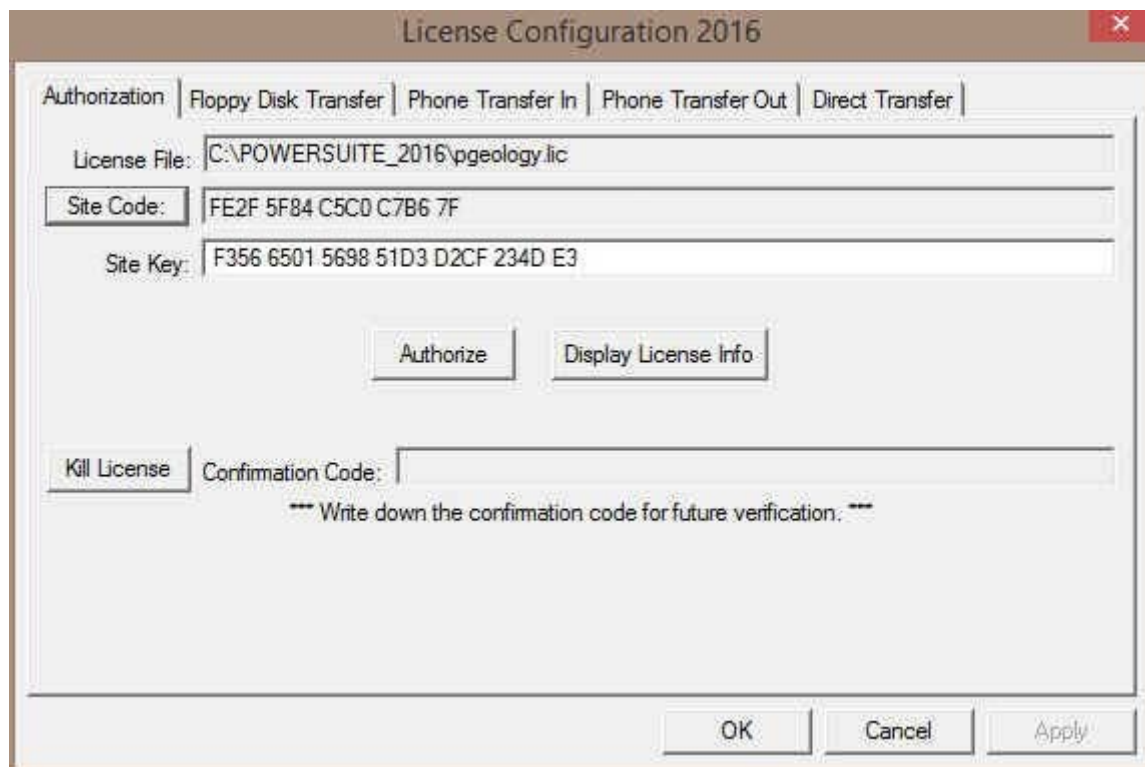
The user will now have to get a Network license activation from Trivision Geosystems Ltd.


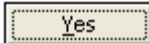

**This procedure cannot be done on the server itself. The administrator has to log on from another computer and do this procedure remotely through another computer that is not the server.**

- 1) If this is a virtual server or a regular server it is mandatory to access the server through the browse command to the shared folder that was created ie \\servername\powersuitelicense. Then you can launch the liccfg.exe from there.



- 2.) Click on the **pgeology.lic** file name in the Crypkey Network installation folder and then click on the **Open** button in the **Select License File** window to proceed.
- 3.) Acknowledge both the subsequent error message and the contact message by clicking on the **OK** buttons. This will now activate the **License Configuration 2016** window which will default to the Authorization Tab.



- 4.) Click on the  button within the window.
- 5.) This will activate a System message stating “*Site Code generation may take a few minutes. Do you wish to continue?*” Click on the  button.
- 6.) The *Site Code* will be generated and can then be displayed in the *Site Code* field. This number can be written down, copied and pasted and sent to Trivision via phone at (403) 777-9454, or email at [info@powerlogger.com](mailto:info@powerlogger.com).
- 7.) **DO NOT CLOSE THIS WINDOW !!!!**
- 8.) Trivision will generate a *Site Key*. This number will have coded within it the number of days the program will be activated for and which modules you wish to purchase or evaluate. Type the site key number within the *Site Key* Field.
- 9.) Click on the  button. If successful you will get a message indicating so.