

Power*Suite Update (Patch) Installation Procedure

POWER*Suite System Requirements
 Limited Access Download Page

POWER*SUITE 2016

Office Viewer (Download): Sep, 2016
 Full Power*Suite Installation (Download)
 Power*Curve Floating License (Download)

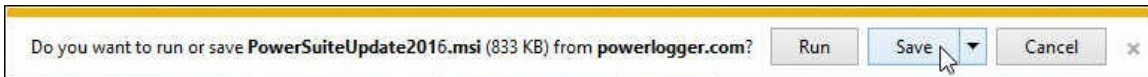
POWER*SUITE 2016 LATEST Patch

Latest Patch
 ASCII to LAS Builder

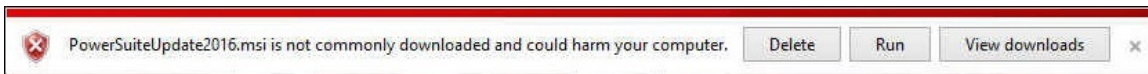
POWER*SUITE 2016 EXECUTABLE FILES
 - for existing users -

ASCII Lithology Export
 Auto Import
 Core Photo Stacker
 Crystal Reports

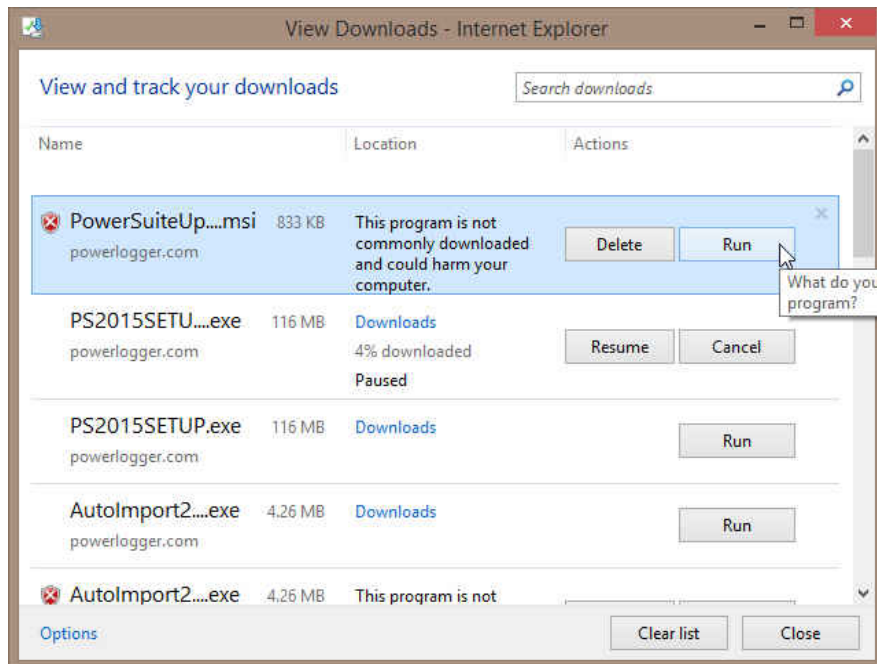
- 1.) Click on the **Latest Patch** selection from our downloads page www.powerlogger.com/downloads.asp.
- 2.) This will activate the download file **PowerSuiteUpdate2016.msi**.



- 3.) Click on the **Save** button and the file will be downloaded to your Downloads folder. This may activate a message indicating this file could harm your computer.



- 4.) Click on the **View downloads** button. This will activate the Downloads Window.

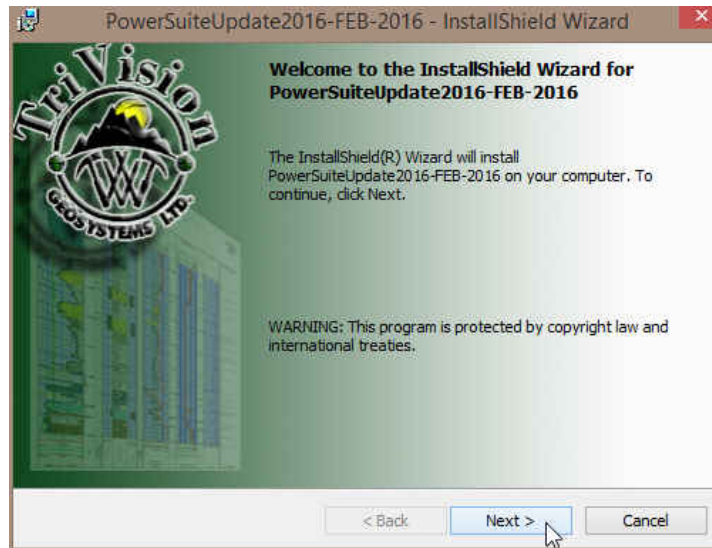


- 5.) Click on the **PowerSuiteUpdate2016.exe** file name and Click on the **Run** button. This will initiate the Install Wizard.

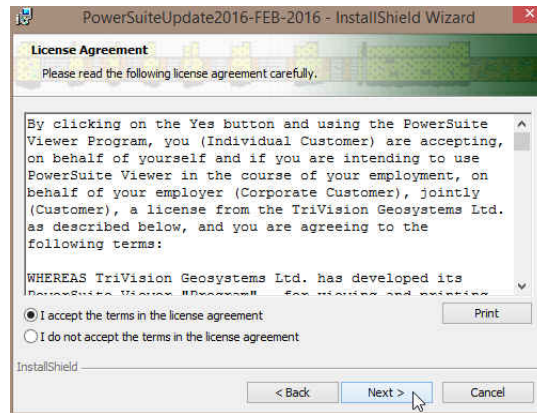
Note: All Power*Suite Applications have to be closed during the Installation. None of your data will be affected and we release updates very commonly. Periodically you will want to check our website for updates. <http://www.powerlogger.com/gpage1.html>

Power*Suite Update (Patch) Installation Procedure

- 1.) This will activate the **Power*Suite Update Welcome Message** Window. **Click** on the  button.

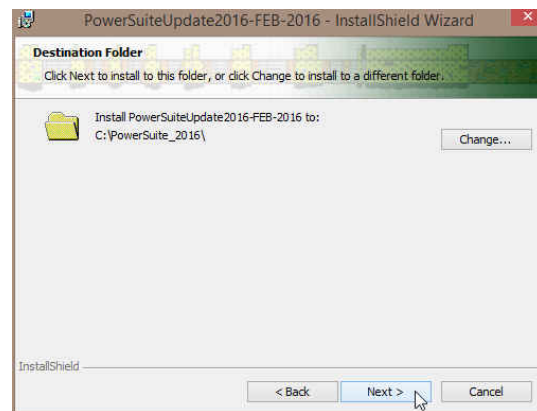


- 2.) This will activate the **License Agreement** window. Click on the radio button beside **I accept the license agreement**. Click on the **Next >** button.

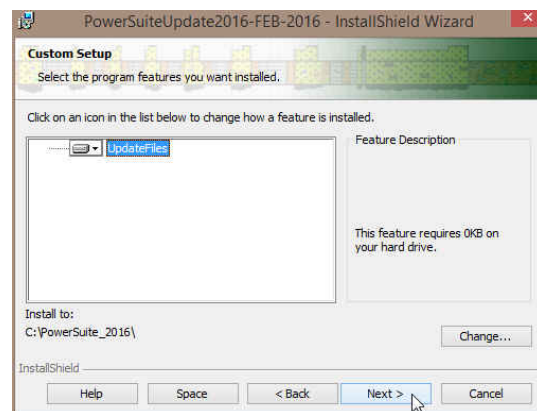


- 3.) This will activate the **Destination Folder** window with **C:\PowerSuite_2016** as the default location. Click on the **Next >** button.

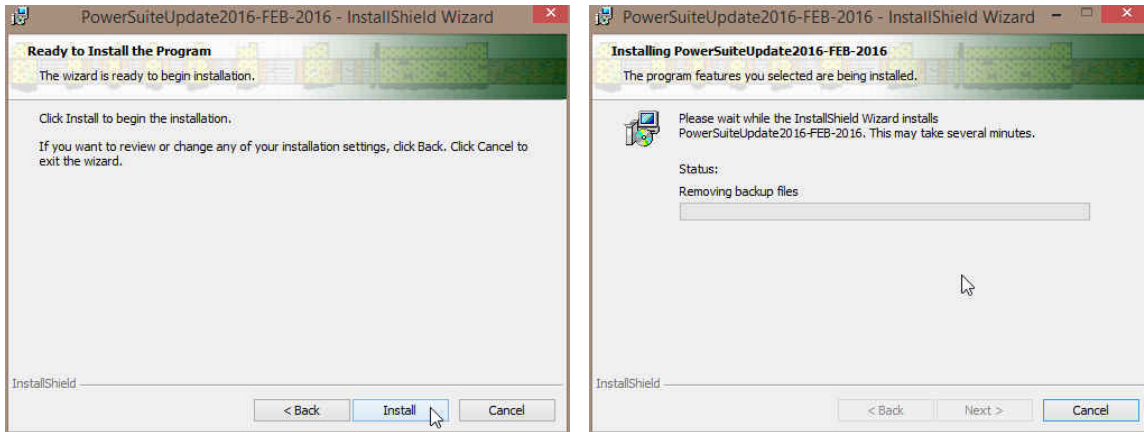
The User has the ability to change the destination folder if required by clicking on the **Change...** button. This all depends on where the original Power*Suite was installed.



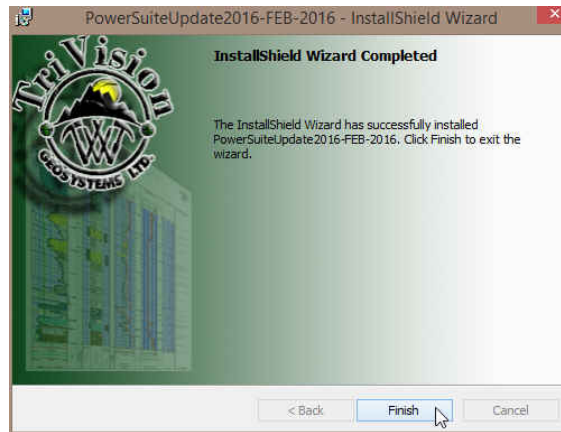
- 4.) If you have **previously installed the floating license** you will want to **Click on the down arrow** beside the **Floating Update** and **select "This feature will be installed on the local hard drive"** as shown below. Click on the **Next >** button



5.) This will activate the **Ready to Install the Program** window. Click on the **Install** button. The user will see the **Installing Power*Suite Update** window copying files, removing backup files etc. An example of this window can be seen below



6.) Once the Update Installation is complete the **Install Wizard Completed** window shown below will be activated. Click on the **Finish** button for the Update installation.



You will now have successfully installed the Power*Suite Update.