
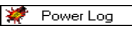
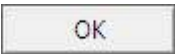
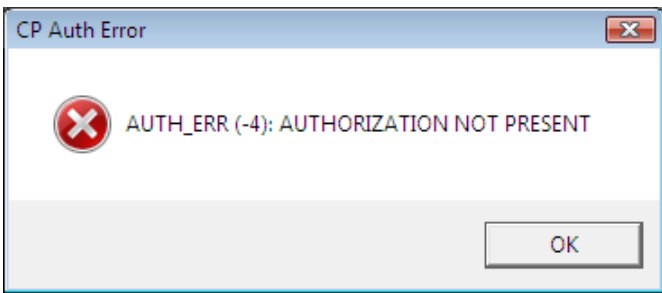


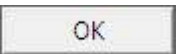
**Trial License Activation**

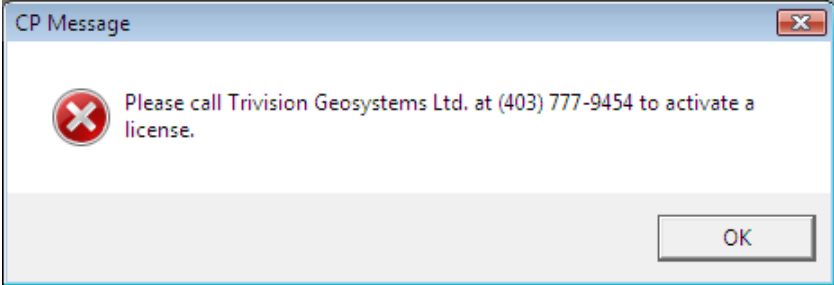


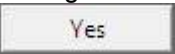
- 1.) **Double click** on the **Power\*Log / Curve or Core** Desktop Icons
- 2.) **Or** In **Windows 7** or less **click** on the  **start** button on the taskbar and **Click** on **All Programs** and **Click** on **PowerSuite\_2018** and then select the **Power\*Log / Curve /Core or Steer** Selections. In **Windows 8 /10** you can **press** the **Windows key** on the **keypad** and **type Power\*Log** into the search bar and then **select** the  **Power Log** to activate the application.

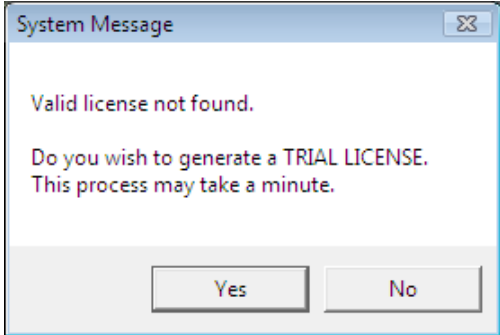
- 3.) This will activate a CP Auth Error message. **Click** on the  **button**.

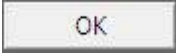


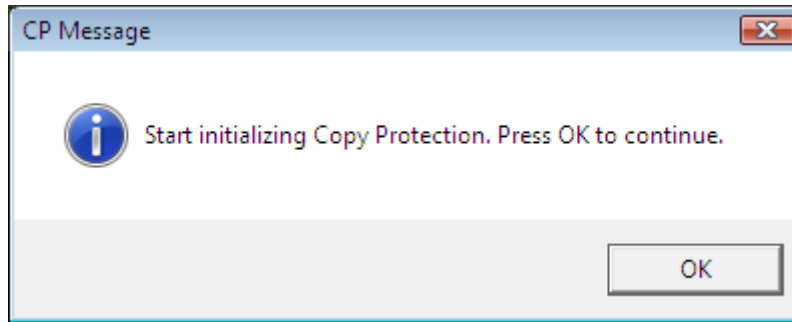
- 4.) This will activate a CP Message shown below. Note the phone number for later use. The trial license activated will be for 7 days. If you need further time to evaluate, you will have to call the phone number for more time. **Click** on the  **button**.




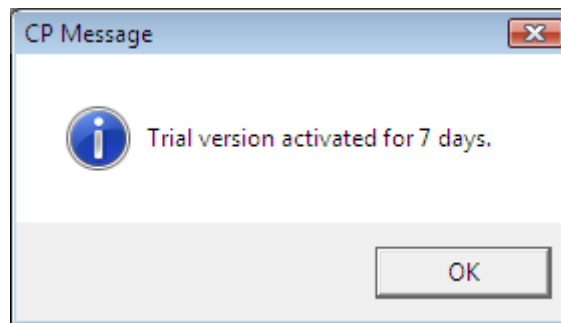
- 5.) This will activate a System Message indicating there was no valid license and do you want to generate a trial license. **Click** on the  **button**.



- 6.) This will activate a CP Message shown below. **Click** on the  **button**.



7.) This will activate another CP Message shown below. **Click** on the  **button**



8.) This will activate a final System Message. **Click** on the  **button**. Repeat Step 1 to activate the program.

