

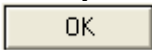
Upgrade Procedures from Version 2015 to 2018

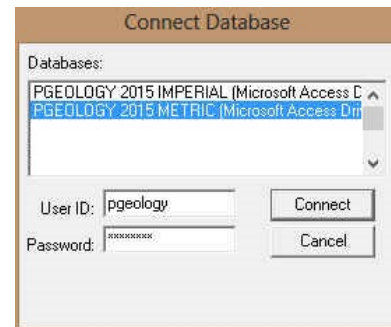
Before this type of installation is performed the user must backup all the wells and logs in their database. The **HASP Key** does have to be **reprogrammed** when a major upgrade is being performed.

Export Log / Well Data

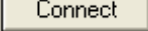
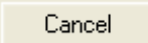

This module allows you to export log configurations, well information and your Geology Dictionary.

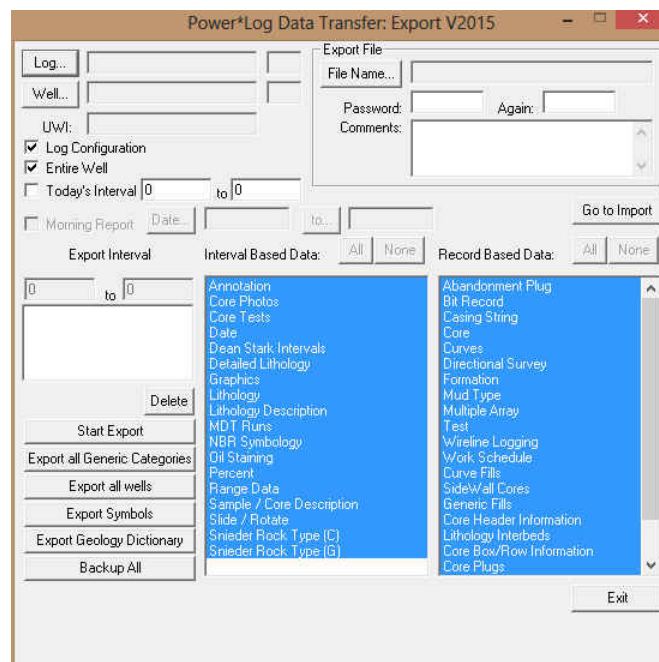


- 1.) **Double click** on the **PowerLog 2015** icon. Acknowledge the Security Information window by **clicking** on the  **button**. This will initiate the program and activate a **Connect Database** window.
- 2.) Highlight the **PGEOLGY 2015 Metric [Microsoft Access Driver (*.mdb)]** database and enter your **User ID** and **Password** in their respective fields (your default User ID and Passwords are both **"pgeology"**).

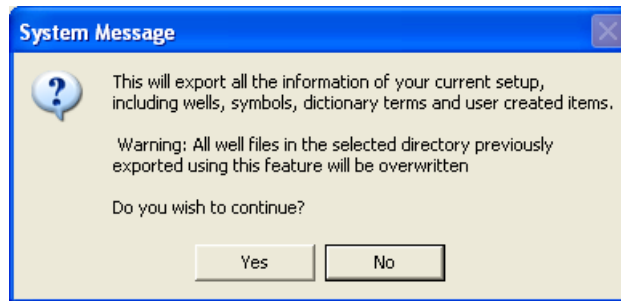



Note: If connecting to the imperial database, highlight the PGEOLGY 2015 Imperial [Microsoft Access Driver (*.mdb)] instead.

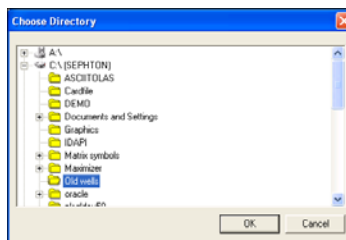
- 3.) **Click** on the  **button** to complete the connection. The **Open Log** window will be shown.
- 4.) **Click** on the  **button**.
- 5.) **Click** on the **File** menu selection, **select Import / Export** and then **select Export Log / Well** from the sub-menu. Or, you can **click** on the  **Export Log / Well button** on the **Toolbar**.

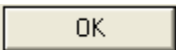


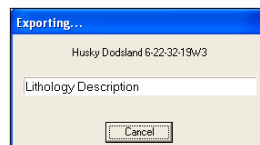
- 6.) Click on the  **button**. This will activate a system message.



- 7.) Click on the  **button**. This will activate a Choose Directory window. You may wish to create a new folder for these well. In the example an old wells folder is selected.



- 8.) Click on the **drive** and **directory** where you wish the well data to be exported to. Click on the  **button**. This will activate the Exporting window.



- 9.) When the export all well data is finished a System Message will be activated as shown below.

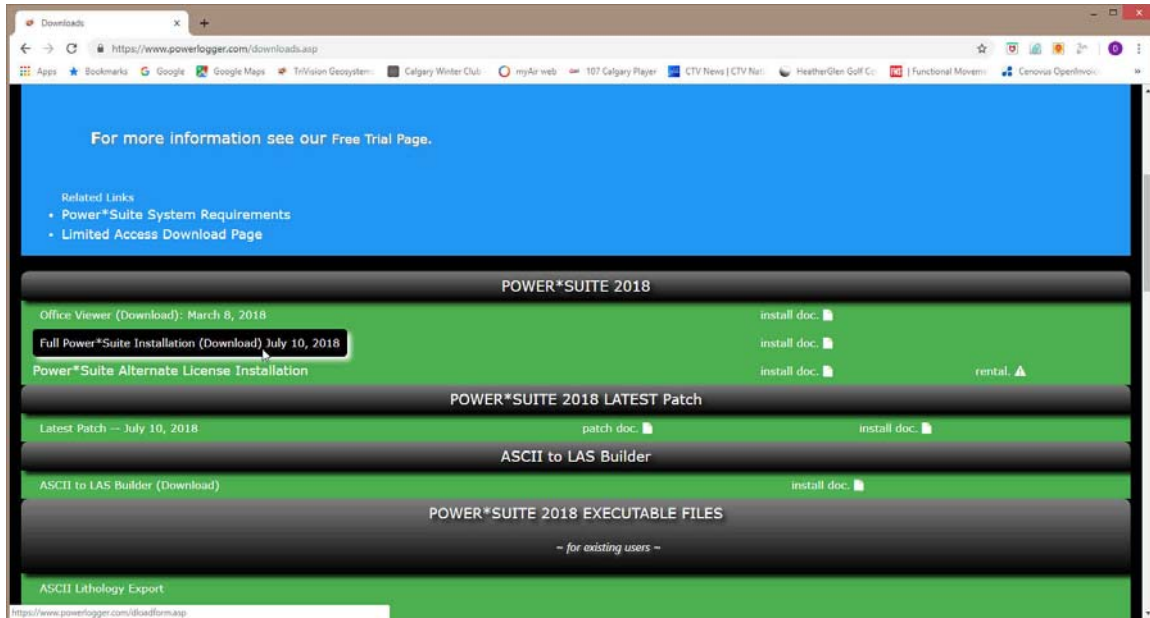
Click on the  **button**.



This procedure backs up all your well / log data along with the Symbols, Expansion dictionary and the Generic category.

It also makes a copy of your pgeology32.ini file that includes all your favorites, window and toolbar selections. This is good to use if you want to keep running Version 2015 on another computer. Does not help much with 2018.

Power*Suite Major Upgrade Installation Procedure



- 1.) Click on the **Full Power*Suite Installation** selection from our downloads page www.powerlogger.com/downloads.asp. This will activate a Submit Customer Information Page.

- ☒ Full Power*Suite
- ☐ Power*Suite Office Viewer
- ☐ ASCII to LAS Builder

First Name*

Robert

Last Name*

Sephton

Title

President

Organization

TriVision Geosystems Ltd.

Phone Number

403-777-9454

Email*

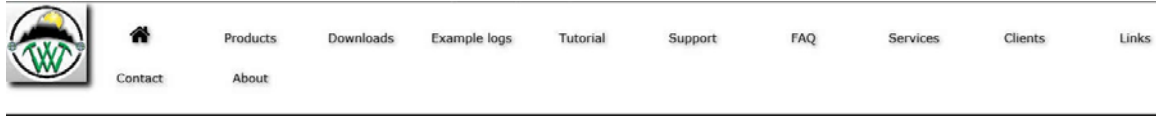
bob.sephton@powerlogger.com

Windows Version

Windows 8

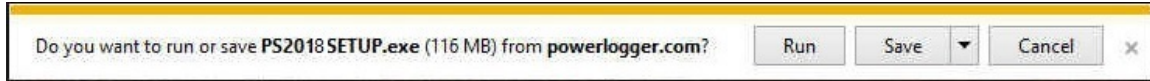
Submit Information

- 2.) Filled in the mandatory fields and click on the **Submit Information** button. This will direct you to the download page.

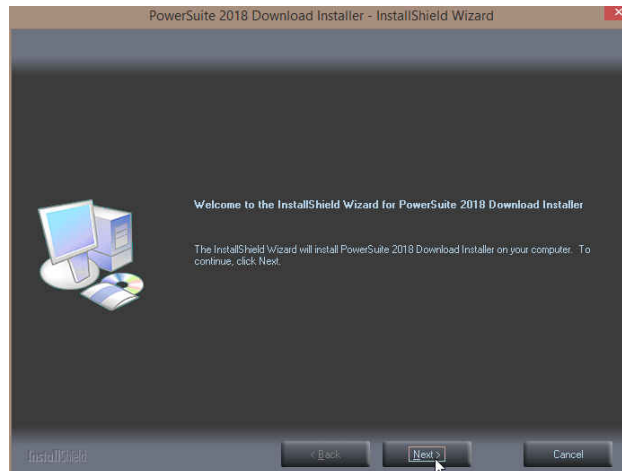


Download: "Full Power*Suite"

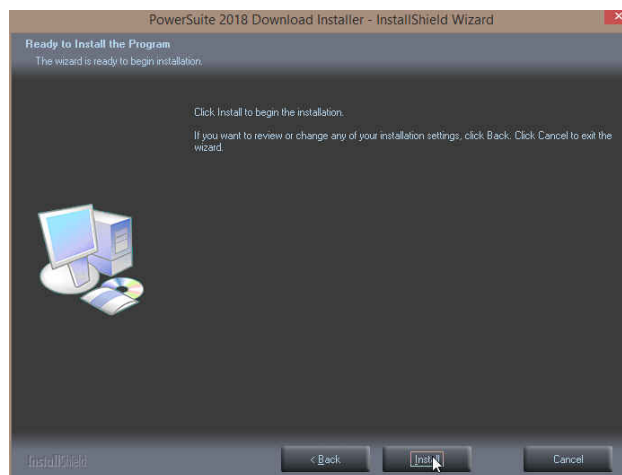
- 3.) Click on the **Download: "Full Power*Suite"** verbiage. This will activate the download file **PS2018Setup.exe**.



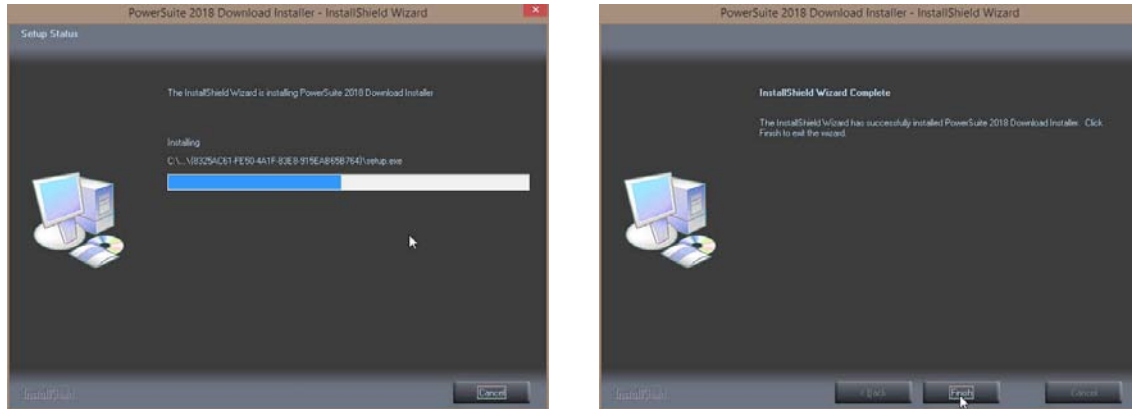
- 4.) Click on the **Save** button and the file will be saved to your downloads folder.
- 5.) Depending on your computer settings you may be asked to allow the application to Run. If you allow this down load to run this will activate the Power*Suite 2018 Download Installer shown below.

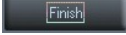


- 6.) Click on the **Next >** button to continue. This will activate the Ready to Install Window shown below.

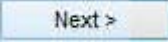


- 7.) Click on the **Install** button to begin the process of extracting the files. When they have been extracted you will be prompted with the Finished Window.

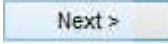


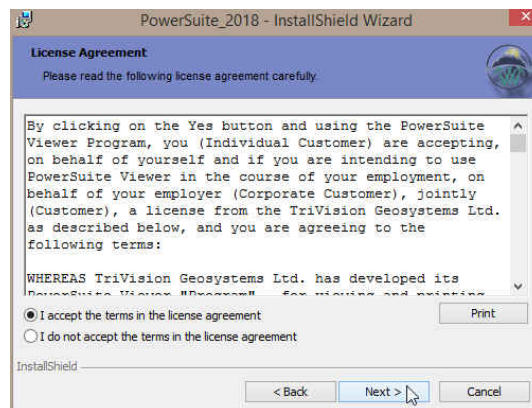
- 8.) When the files are finished extracting you will see the **Click**  **button**. This will begin the installation of Power*Suite 2018. If the installation does not proceed you will want to locate and run a file called **setup.exe** in the C:\PS2018SETUP\ folder.


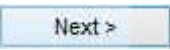
Power*Suite Installation Procedure

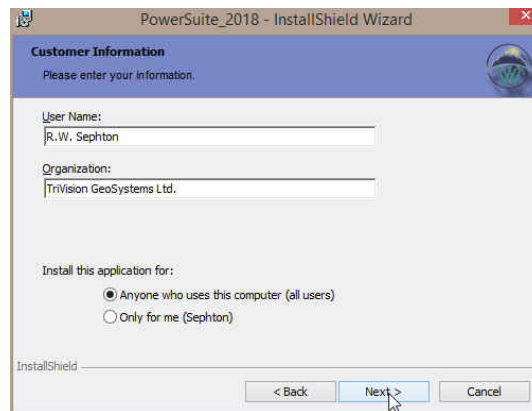
- 1.) This will activate the Install Shield setup followed by the Windows Install window and the **Power*Suite Welcome Message Window**. Click on the  **button**.



- 2.) This will activate the License Agreement window. Click on the ☒ beside **I accept the terms in the license agreement**. Then click on the  **button**.

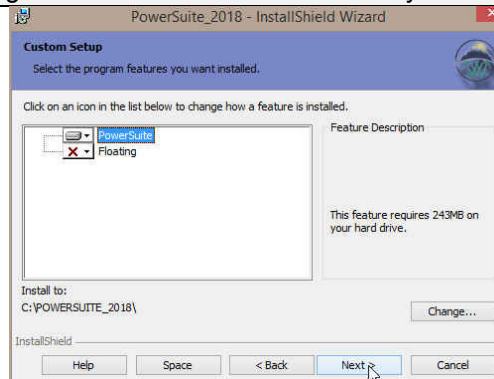


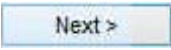
- 3.) This will activate the Customer Information window with User Name and Organization fields. In the Install this application for portion of the window **Click** on the  beside **Anyone who uses this computer**. Then **click** on the  button.



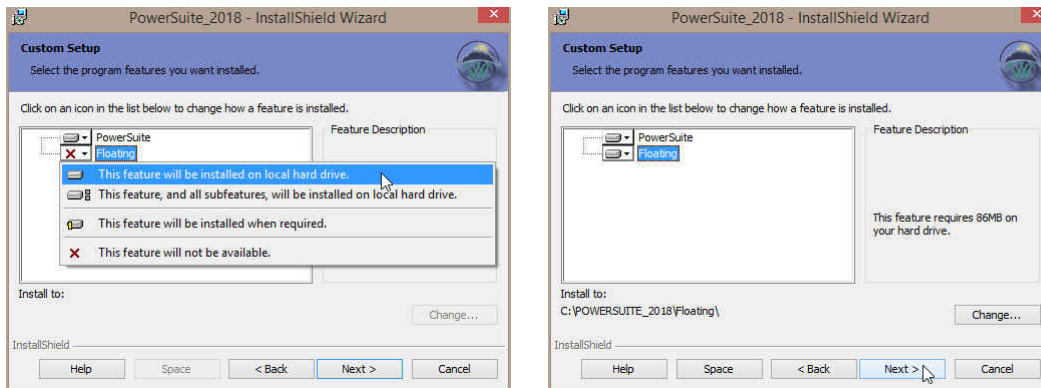
- 4.) This will activate the **Custom Setup** window. There are a couple of things that can be initiated in the window. You can **change the install folder location** and you can utilize a **second type of Power*Suite licensing**.

The floating folder allows the user to have two licensing types available. This could be a HASP key activation for Power*Log and a QLM or another HASP key activation for Power*Curve.



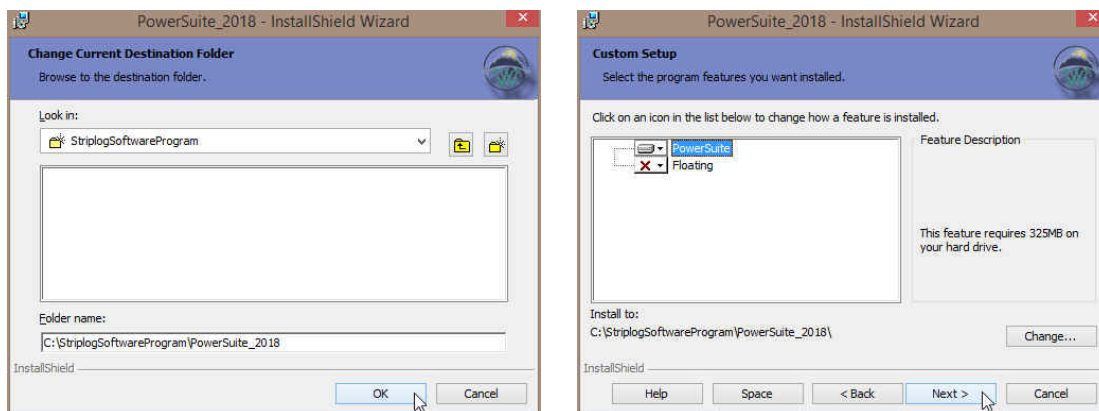
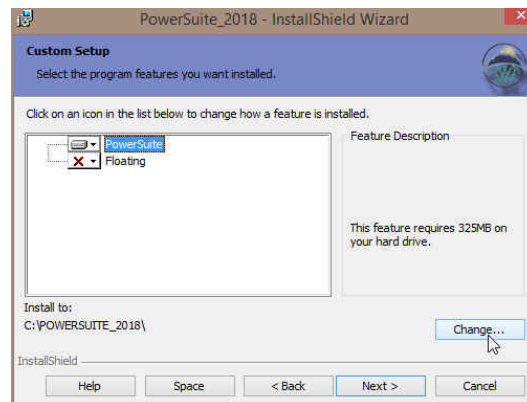
- 5.) If you do not want to change the install location or activate the Floating folder for a second activation then **Click** on the  button. Skip ahead to step 9.
- 6.) If you do need to **utilize a second type of Power*Suite licensing** then you will want to **click** on the **Floating** down arrow and select This option will be installed on the Local Hard Drive. If not the Skip ahead to step 9.

The floating folder allows the user to have two licensing types available. This could be a HASP key activation for Power*Log and a QLM or another HASP key activation for Power*Curve.

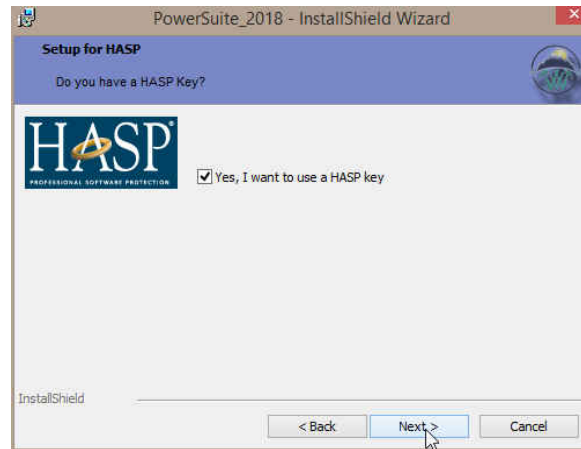



- 7) If you need to **change** the install **destination folder** click on the **Change...** button. This will activate a Change current destination folder. The user can navigate to an existing folder with the  button, create your own folder by the  button or type directly into the folder name portion of the window to create your own path.

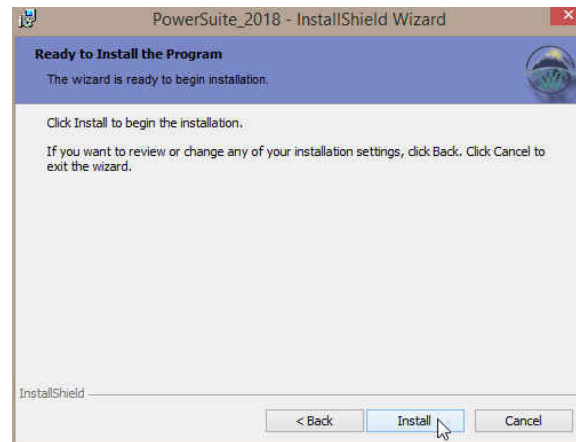
Note: The folder name cannot have any spaces. You can use underscore _ or dashes- to separate the folder name.



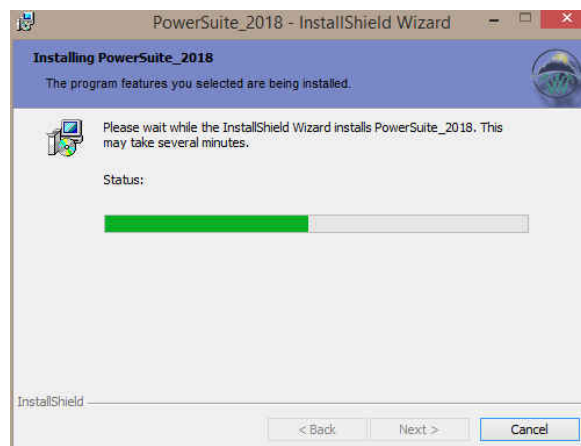
- 8) Click on the **Next >** button.
- 9) This will activate the Setup for Hasp Window. If you have a Hasp USB key and it has been activated for Power*Suite 2018 Click on the **Next >** button.



10) This will activate the Ready to Install window. **Click** on the  **button.**

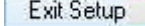


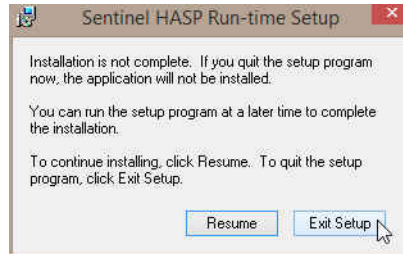
11) Next the user will see the Installing **Power*Suite window** copying files, writing to the registry, creating desktop icons, creating start menu folder, ODBC components etc. An example of this window can be seen below.




- 12) Once the Installation has been completed the Hasp Device Driver Installation Welcome window will be activated. **Because this is an upgrade your HASP driver has already been installed on your PC. Click on the  button.**




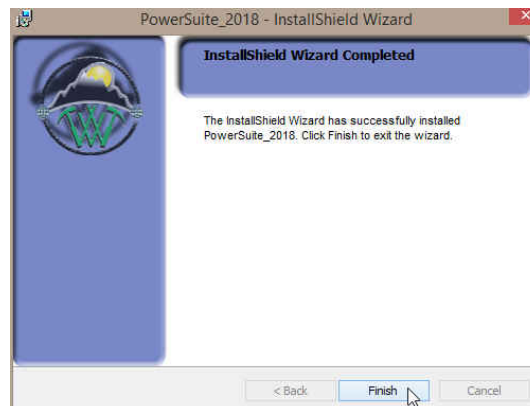
- 13) This will activate a Sentinel HASP Run-time Setup message. **Click on the  button.**



- 14) This will activate another Sentinel HASP Run-time Setup message. **Click on the  button.**



- 15) The **Install Wizard Completed** window shown below will be activated. **Click on the  button for the Main install.**





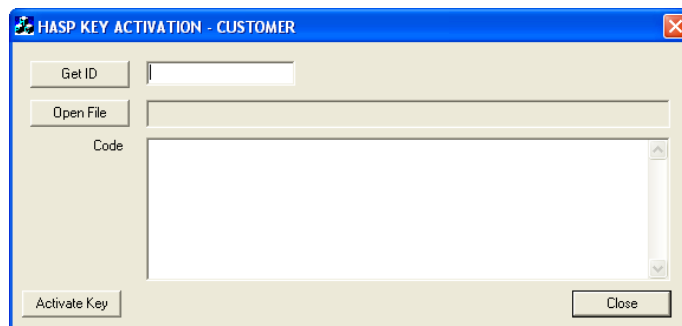
You have now successfully installed Power*Suite Version 2018.


HASP Key Log Upgrade Procedures

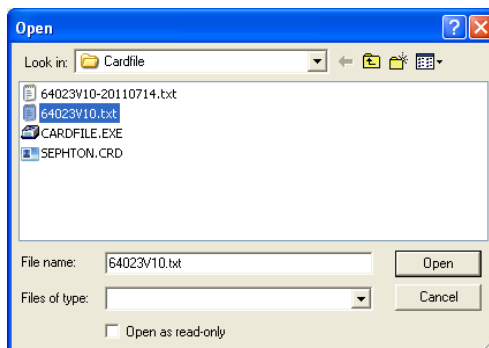
The following are the instructions on how to update your USB HASP key.


We have adapted our authorization from Version 3.0 onward with a Hasp USB Key. Once a Power*Suite program is loaded on a machine the user has simply to attach a Hasp USB key to the USB Port on their computer. The program is initially installed and protected by a software program. We have utilized a Software Authorization Program called QLM in Version 2018

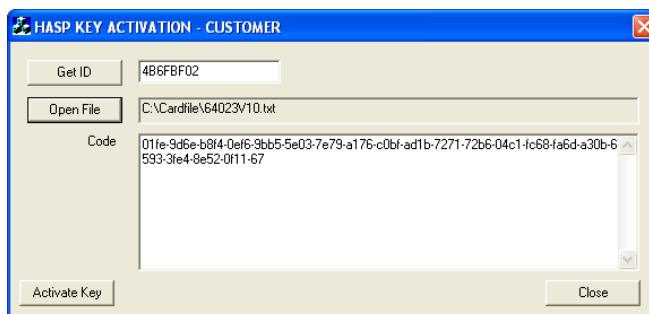
- 1.) Click on the  **start** button on the toolbar and click on **All Programs** and select **POWER*SUITE_2018**. Then select the **Hasp Update Tool** selection, and then click on the  **HASP Log Update** selection. This will activate the Hasp Key Activation window. Or in **Windows 8 /10** you will want to **press** the **Windows key** on your **keypad** and **type Hasp Log Update** and **select** it from your search.




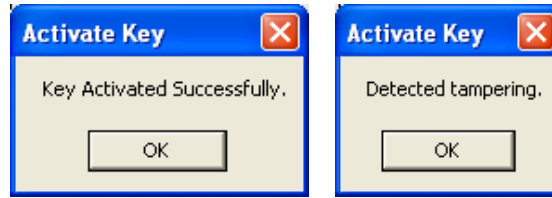
- 2.) Click on the  **Open File** button. This will activate the open file window and locate the codes that were sent to you via email or other means. If you do not have email then you will have to fill in this Code field by hand.



- 3.) Click on the  **Open** button and the codes will then be viewed in the activation window as shown below.



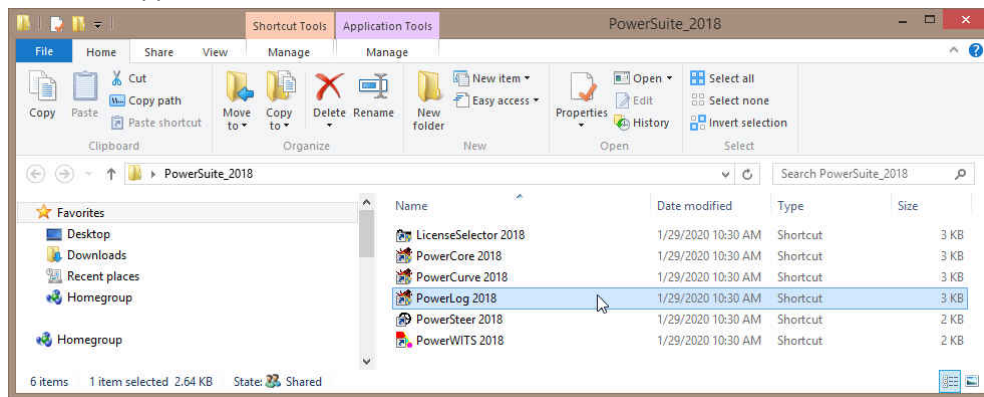
- 4.) Click on the  **Activate Key** button. If done successful you will receive a system message as shown below. Or if unsuccessful you will receive a message such as tampering as shown below.



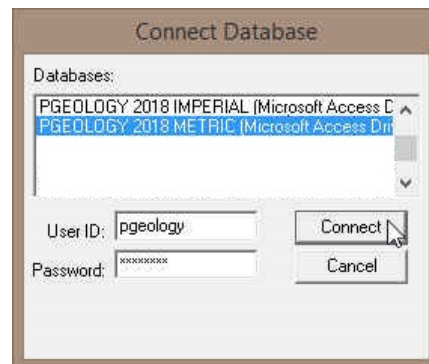
- 5.) Click on the **OK** button and then click on the **Close** button to close the window.

Verify your USB Activation

You can now use any of your authorized Power*Suite Applications which are in the **PowerSuite_2018 Desktop Folder** created during the install. **Double click** on the **Power*Log** (Vertical Application), **Power*Curve** (Horizontal Application), **Power*Core** (Core Application), **Power*Steer** (Steering Application) or **Power*Wits** (Automated Import Utility) Icons to start using our Power*Suite applications.



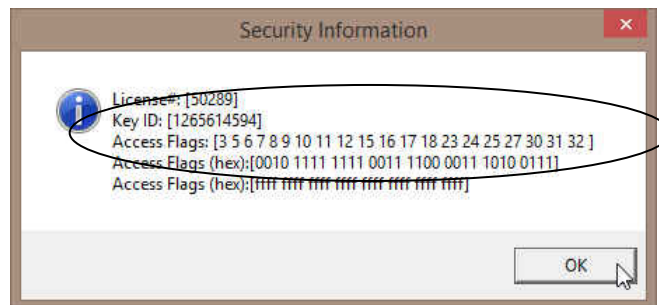
- 1.) Open the **Power*Suite_2018** desktop folder and **double click** on the **PowerLog 2018** Icon. This will initiate the program and activate a **Connect Database** window.



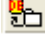
- 2.) Highlight the **PGEOLGY 2018 Metric [Microsoft Access Driver(*.mdb)]** database and enter your **User ID** and **Password** in their respective fields (your default User ID and Passwords are both "pgeology").
- 3.) Click on the **Connect** button to complete the connection. The **New Log** window will be shown.
- 4.) Click on the **Cancel** button.
- 5.) Select **Show Registration**, under the **Help** menu selection in Power*Log as shown below.

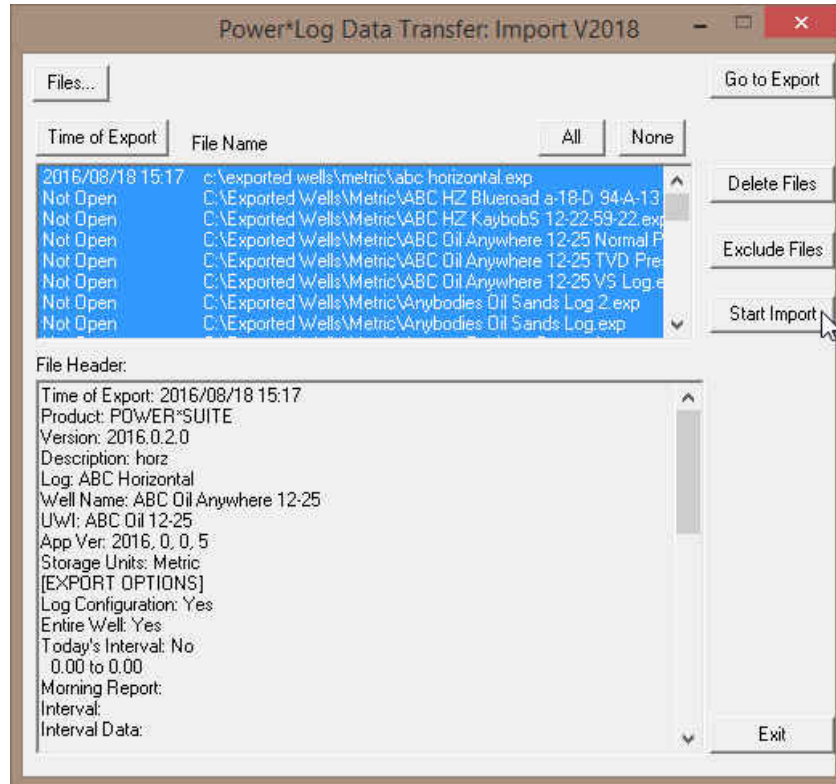


This will activate the Security Information window and show you the access flags on the USB key you just activated. The window is shown below. Yours should be similar to the one shown below. Flags **3, 5, and 6** indicates 2018. Flags **3, 5 and 6** will run all Power*Suite applications from Version 6 to Version 2018.





Import your Log / Well Data

- 1.) **Select Import**, under the **File** menu in **Power*Log / Curve or Core**, and then **select Log / Well** from the sub-menu. Or, you can use the  **Import** button on the **Toolbar**. This will activate the **Import** window shown below.


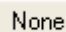
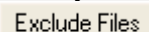



Note: Import the symbols (*powersuitesymbols-{export date}.exp*), generic category (*genericcategories-{export date}.exp*) & geological expansion dictionary (*geodictionary-{export date}.exp*) exports first. Then, import your well data.

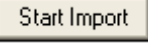
- 2.) Click on the  **Files...** button to browse through your drives/directories for the file(s) you wish to import. Note that files available for importing will have an **.EXP** file extension. Any of the files that you select will then be added to the **File** list. Please make sure that the files you wish to import are highlighted (selected), in the list prior to importing.

Note: You are not able to select more than six wells from the **Import From** window successfully. If you have a lot of wells to import, select the first well from this window. Go through the import procedures outlined below 7-12. Exit the import window. Activate the **Import** window again and the default folder will be the last one you used, and then you can click on the  **All** button and proceed.

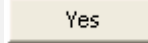
- 3.) The **Import Log/Well** window will now display the details of the file(s) to be imported. **Select** or click (highlight) the **file(s)** to be imported.

Note: Use the  **All** button to select all of the files or use the  **None** button to select none of the files. Note that you can select or turnoff individual files by simply clicking on them with your mouse. The  **Exclude Files** button will remove the selected/highlighted files from the import list, but will not delete them. The  **Delete Files** button, on the other hand, will completely erase the

selected/highlighted files from their directory. Once deleted, these files will no longer be recoverable.

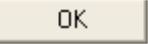
4.) Click on the  button to activate the following system message, “***Do you really want to IMPORT the highlighted files?***”.

5.) Click on the  button to proceed with the import.

Note: If you clicked on the  button, and the file you are importing contains the information from an **Entire Well**, the following system message will be activated, “***About to IMPORT ENTIRE WELL data. All information associated with this well in the database will be OVERWRITTEN. Continue?***”.


6.) Click on the  button.

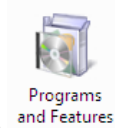
7.) Upon completion of the import, the following system message will then be activated, “***Data has been imported successfully.***”

8.) Click on the  button to confirm the successful import of the data.

Power*Suite 2015 Program Removal

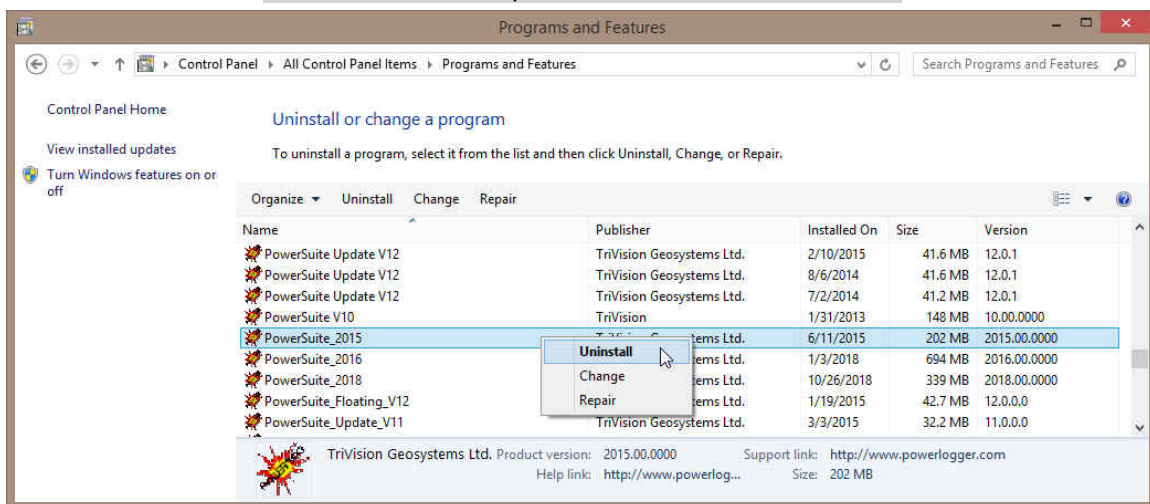
Note: It is not necessary to remove Power*Suite 2015. It can be done now or later. Also it doesn't have to be done at all.


- 1.) In Windows 7 or less Click on the **Start menu**  selection, **select Settings** and **select Control Panel**. In Window 8 click on the **Windows key** on your **keypad**, **type control panel** in your search menu and **select Control Panel** to Activate the Control Panel Window.



- 2.) Click on the **Programs and Features selection** in the Control Panel Window.

Note: Uninstall the Updates for Power*Suite 2015 first



- 3.) Click on the **Power*Suite_2015** program and click on the **Uninstall** button.
- 4.) This will activate the Windows Installer and then a User Account Control Window. **Select the Allow Option** "I know this Program, I know where it's from or I've used it before"
- 5.) This will remove the Power*Suite program. When it is finished it will remove Power*Suite from the list. **Close** the windows by clicking on the  **x's** in the upper right corner of the windows.